

FILED VAVAS563 L72480 2003-10-03 07:46:32.635937

BC ONLINE LAND TITLE INTERNET SERVICE
PROVIDED IN CO-OPERATION WITH
LAND TITLE BRANCH - MINISTRY OF SUSTAINABLE RESOURCE MANAGEMENT

B.C. LAND TITLE BRANCH - DOCUMENT RETRIEVAL		WEB REQUEST	
CLIENT NAME:	DYE & DURHAM COMPANY INC.		
ADDRESS:	10-620 ROYAL AVENUE NEW WESTMINSTER BC V3M 5Y4		
PICK-UP INSTRUCTIONS:			
USER ID:	PL81548	APPLICATION NO.:	VAVAS63 VA PAGES: 008
ACCOUNT NO.:	477677	REQUESTED AT:	03-10-03 07:46
REFERENCE NO.:	L72480	FOLIO NO.:	
REMARKS:			

BC ONLINE LAND TITLE INTERNET SERVICE

HELP DESK VICTORIA (250) 953-8200
IN B.C. 1-800-663-6102
ADMINISTRATION OFFICE ... (250) 953-8250
FAX NUMBER (250) 953-8222

PERSONS WHO NEED TO RELY ON A PLAN FOR LEGAL PURPOSES MUST EXAMINE THE OFFICIAL VERSION AT THE LAND TITLE OFFICE IN WHICH THE PLAN IS DEPOSITED.

THE BYLAW AND COMMON PROPERTY SHEETS ATTACHED TO STRATA PLANS HAVE BEEN REPEALED. INFORMATION REGARDING THE BYLAWS AND/OR DEALINGS AFFECTING THE COMMON PROPERTY OF STRATA PLANS MUST BE OBTAINED FROM THE GENERAL INDEX AND/OR COMMON PROPERTY INDEX ON ALTOS. REFER TO THE BC ONLINE USER GUIDE FOR ACCESS INFORMATION.

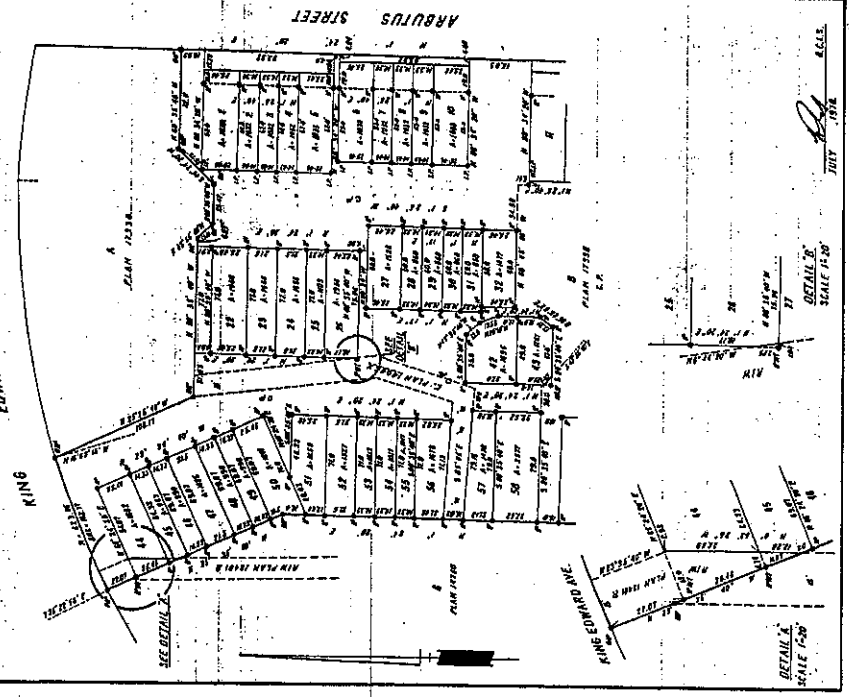
SHEET 2 OF 3 SHEETS
 STRATA PLAN
Vr563

**PLAN OF STRATA LOTS 1 TO 10,
 22 TO 32 AND 42 TO 58.**

Approved pursuant to section 5(1)(b) of
 Conveyancing Act 1919 and this 22nd Day of
 May 1988 the State of New South Wales
 Registered Conveyancer
 and of his/her

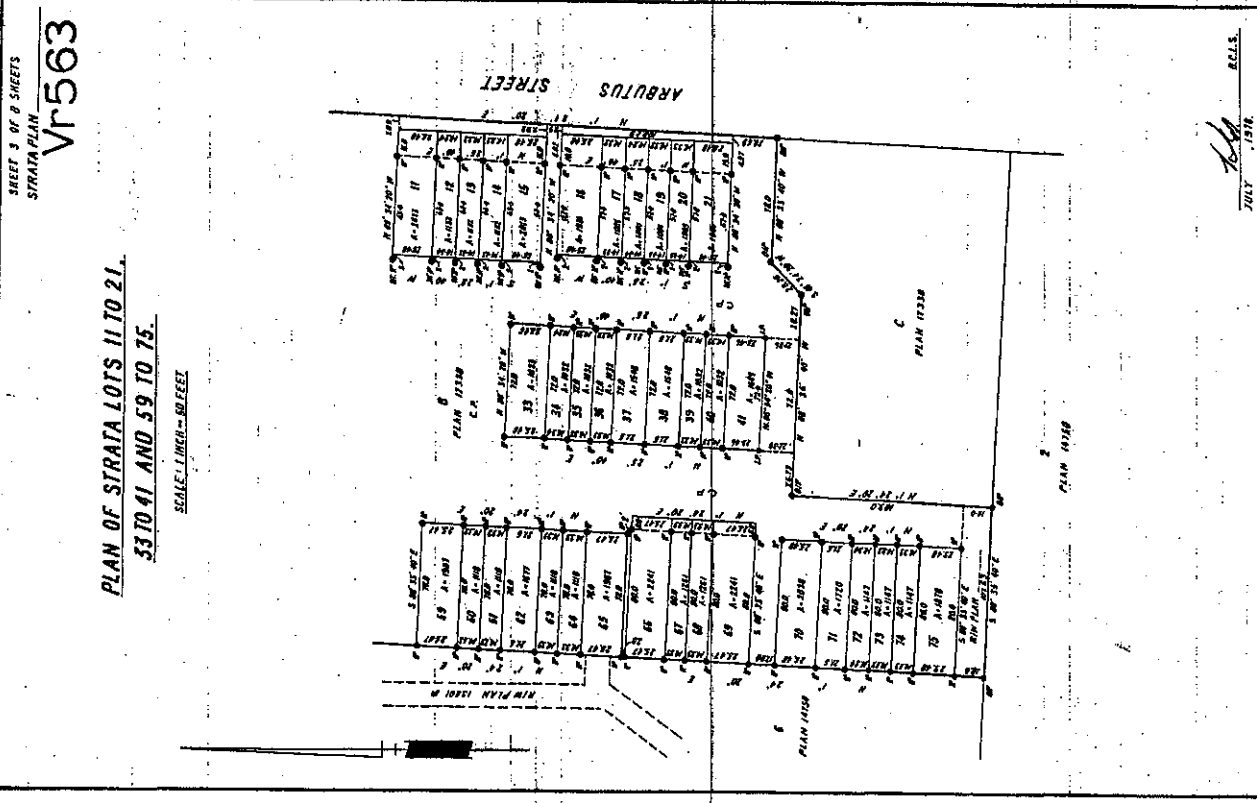
- LEGEND:
 BEARINGS ARE ASTROGNOMIC AND DERIVED
 FROM PLAN 17338.
 * DENOTES OLD IRON POST FOUND.
 * DENOTES IRON POST SET BY WITNESSES.
 * AREA.
 * DENOTES STRATA LOT NUMBERS (TYPICAL).
 * COMMON PROPERTY.

ALL AREAS ARE IN SQUARE FEET.



SCALE
 JULY 1988
 DETAIL 'B'
 SCALE 1:200

DETAIL 'A'
 SCALE 1:200



SHEET 3 OF 8 SHEETS
STRATA PLAN
Vr563

PLAN OF STRATA LOTS 11 TO 21,
33 TO 41 AND 59 TO 75.

SCALE: 1 INCH = 50 FEET

REELS
JULY 1978

LOT No.	SHEET No.	FORM 1		FORM 2		FORM 3	
		SCHEDULE OF UNIT ENTITLEMENT	INTEREST UPON DESTRUCTION	SCHEDULE OF INTEREST UPON DESTRUCTION	SCHEDULE OF UNIT ENTITLEMENT	INTEREST UPON DESTRUCTION	NUMBER OF UNITS
1	1	1850	24	24	24	24	24
2	2	1550	20	20	20	20	20
3	3	1850	24	24	24	24	24
4	4	1550	20	20	20	20	20
5	5	1875	24	24	24	24	24
6	6	1875	24	24	24	24	24
7	7	1550	20	20	20	20	20
8	8	1550	20	20	20	20	20
9	9	1550	20	20	20	20	20
10	10	1850	24	24	24	24	24
11	11	1550	20	20	20	20	20
12	12	1550	20	20	20	20	20
13	13	1550	20	20	20	20	20
14	14	1550	20	20	20	20	20
15	15	1875	24	24	24	24	24
16	16	1875	24	24	24	24	24
17	17	1550	20	20	20	20	20
18	18	1550	20	20	20	20	20
19	19	1550	20	20	20	20	20
20	20	1550	20	20	20	20	20
21	21	1850	24	24	24	24	24
22	22	2000	24	24	24	24	24
23	23	2000	24	24	24	24	24
24	24	2000	24	24	24	24	24
25	25	1875	24	24	24	24	24
26	26	2000	24	24	24	24	24
27	27	2000	24	24	24	24	24
28	28	1875	24	24	24	24	24
29	29	1875	24	24	24	24	24
30	30	1875	24	24	24	24	24
31	31	2000	24	24	24	24	24
32	32	2000	24	24	24	24	24
33	33	1875	24	24	24	24	24
34	34	1875	24	24	24	24	24
35	35	1875	24	24	24	24	24
36	36	1875	24	24	24	24	24
37	37	2000	24	24	24	24	24
38	38	2000	24	24	24	24	24
39	39	1875	24	24	24	24	24
40	40	1875	24	24	24	24	24
41	41	1875	24	24	24	24	24
42	42	1875	24	24	24	24	24
43	43	1875	24	24	24	24	24
44	44	1875	24	24	24	24	24
45	45	1875	24	24	24	24	24
46	46	1875	24	24	24	24	24
47	47	1875	24	24	24	24	24
48	48	1875	24	24	24	24	24
49	49	1875	24	24	24	24	24
50	50	1875	24	24	24	24	24
51	51	1875	24	24	24	24	24
52	52	1875	24	24	24	24	24
53	53	1875	24	24	24	24	24
54	54	1875	24	24	24	24	24
55	55	1875	24	24	24	24	24
56	56	1875	24	24	24	24	24
57	57	1875	24	24	24	24	24
58	58	1875	24	24	24	24	24
59	59	1875	24	24	24	24	24
60	60	1875	24	24	24	24	24
61	61	1875	24	24	24	24	24
62	62	1875	24	24	24	24	24
63	63	1875	24	24	24	24	24
64	64	1875	24	24	24	24	24
65	65	1875	24	24	24	24	24

FILED JULY 1998

6615

STRATA TITLES ACT

SECOND SHEET SHEET 5 OF 8 SHEETS
STRATA PLAN Vr5663

LOT No.	SHEET No.	FORM 1		FORM 2		FORM 3	
		SCHEDULE OF UNIT ENTITLEMENT	INTEREST UPON DESTRUCTION	SCHEDULE OF INTEREST UPON DESTRUCTION	SCHEDULE OF PUTURE RIGHTS	NUMBER OF UNITS	NUMBER OF UNITS
66	3	2000	28	28			
67	3	1825	23	23			
68	3	1825	23	23			
69	3	2000	28	28			
70	3	2000	28	28			
71	3	2000	28	28			
72	3	1825	23	23			
73	3	1825	23	23			
74	3	1825	23	23			
75	3	2000	28	28			
76	3	2000	28	28			
AGGREGATE		128325					

ACCEPTED AS TO FORMS 1 AND 2
ON 23rd day of October 1978
James M. Lusk
for SUPERINTENDENT OF INSURANCE

STATUTORY DECLARATION
I, THE UNDERSIGNED DO SOLEMNLY DECLARE THAT:
1) I, THE UNDERSIGNED AM THE DULY AUTHORIZED AGENT OF THE OWNER-DEVELOPER;
2) THE STRATA PLAN IS ENTIRELY FOR RESIDENTIAL USE.
I MAKE THIS SOLEMN DECLARATION CONSCIENTIOUSLY BELIEVING IT TO BE TRUE AND KNOWING THAT IT IS OF THE SAME FORCE AND EFFECT AS IF MADE UNDER OATH.
DECLARED BEFORE ME AT Vancouver
ON THE PROVINCE OF BRITISH COLUMBIA
THIS 28th day of October, 1978.
W. W. J. [Signature]
A COMMISSIONER FOR TAKING AFFIDAVITS WITHIN THE PROVINCE OF BRITISH COLUMBIA.

STATUTORY DECLARATION
Amended Pursuant to Section 54(6) of the Condominium Act, R.S.B.C. 1973, Chapter 67, May 1980 See Strata Plan Vr-5663
Residential Property Register
See of 11/28/84
[Signature]

SIGNATURES AS REQUIRED (SECTION 3 (5)(a))

OWNER - DEVELOPER
BARD DEVELOPMENTS LTD.
[Signature]
[Signature]

WITNESS:
PETER LISBIE
AS TO THE SIGNATURES OF THE ATTORNEYS IN FACT OF THE MERCHANTILE BANK OF CANADA

MORTGAGEE:
THE MERCHANTILE BANK OF CANADA
BY THE ATTORNEYS IN FACT:
[Signature]
[Signature]
FIRST CITY INVESTMENTS LTD.
CITY STRAIT TRUST COMPANY

R.C.L.S.
JULY 1978

SHEET 6 OF 8 SHEETS
STRATA PLAN
Vr563

TOWN HOUSE ADDRESSES				SPRINGTREE DRIVE				PARKWAY DRIVE			
ARBUTUS STREET.		ADDRESS		ADDRESS		ADDRESS		ADDRESS		ADDRESS	
STRAIT LOT	BLDG. NO.	STRAIT LOT	BLDG. NO.	STRAIT LOT	BLDG. NO.	STRAIT LOT	BLDG. NO.	STRAIT LOT	BLDG. NO.	STRAIT LOT	BLDG. NO.
1	1	24	1	24	1	24	1	24	1	24	1
2	2	25	2	25	2	25	2	25	2	25	2
3	3	26	3	26	3	26	3	26	3	26	3
4	4	27	4	27	4	27	4	27	4	27	4
5	5	28	5	28	5	28	5	28	5	28	5
6	6	29	6	29	6	29	6	29	6	29	6
7	7	30	7	30	7	30	7	30	7	30	7
8	8	31	8	31	8	31	8	31	8	31	8
9	9	32	9	32	9	32	9	32	9	32	9
10	10	33	10	33	10	33	10	33	10	33	10
11	11	34	11	34	11	34	11	34	11	34	11
12	12	35	12	35	12	35	12	35	12	35	12
13	13	36	13	36	13	36	13	36	13	36	13
14	14	37	14	37	14	37	14	37	14	37	14
15	15	38	15	38	15	38	15	38	15	38	15
16	16	39	16	39	16	39	16	39	16	39	16
17	17	40	17	40	17	40	17	40	17	40	17
18	18	41	18	41	18	41	18	41	18	41	18
19	19	42	19	42	19	42	19	42	19	42	19
20	20	43	20	43	20	43	20	43	20	43	20
21	21	44	21	44	21	44	21	44	21	44	21
22	22	45	22	45	22	45	22	45	22	45	22
23	23	46	23	46	23	46	23	46	23	46	23
24	24	47	24	47	24	47	24	47	24	47	24
25	25	48	25	48	25	48	25	48	25	48	25
26	26	49	26	49	26	49	26	49	26	49	26
27	27	50	27	50	27	50	27	50	27	50	27
28	28	51	28	51	28	51	28	51	28	51	28
29	29	52	29	52	29	52	29	52	29	52	29
30	30	53	30	53	30	53	30	53	30	53	30
31	31	54	31	54	31	54	31	54	31	54	31
32	32	55	32	55	32	55	32	55	32	55	32
33	33	56	33	56	33	56	33	56	33	56	33
34	34	57	34	57	34	57	34	57	34	57	34
35	35	58	35	58	35	58	35	58	35	58	35
36	36	59	36	59	36	59	36	59	36	59	36
37	37	60	37	60	37	60	37	60	37	60	37
38	38	61	38	61	38	61	38	61	38	61	38
39	39	62	39	62	39	62	39	62	39	62	39
40	40	63	40	63	40	63	40	63	40	63	40
41	41	64	41	64	41	64	41	64	41	64	41
42	42	65	42	65	42	65	42	65	42	65	42
43	43	66	43	66	43	66	43	66	43	66	43
44	44	67	44	67	44	67	44	67	44	67	44
45	45	68	45	68	45	68	45	68	45	68	45
46	46	69	46	69	46	69	46	69	46	69	46
47	47	70	47	70	47	70	47	70	47	70	47
48	48	71	48	71	48	71	48	71	48	71	48
49	49	72	49	72	49	72	49	72	49	72	49
50	50	73	50	73	50	73	50	73	50	73	50
51	51	74	51	74	51	74	51	74	51	74	51
52	52	75	52	75	52	75	52	75	52	75	52
53	53	76	53	76	53	76	53	76	53	76	53
54	54	77	54	77	54	77	54	77	54	77	54
55	55	78	55	78	55	78	55	78	55	78	55
56	56	79	56	79	56	79	56	79	56	79	56
57	57	80	57	80	57	80	57	80	57	80	57
58	58	81	58	81	58	81	58	81	58	81	58
59	59	82	59	82	59	82	59	82	59	82	59
60	60	83	60	83	60	83	60	83	60	83	60
61	61	84	61	84	61	84	61	84	61	84	61
62	62	85	62	85	62	85	62	85	62	85	62
63	63	86	63	86	63	86	63	86	63	86	63
64	64	87	64	87	64	87	64	87	64	87	64
65	65	88	65	88	65	88	65	88	65	88	65
66	66	89	66	89	66	89	66	89	66	89	66
67	67	90	67	90	67	90	67	90	67	90	67
68	68	91	68	91	68	91	68	91	68	91	68
69	69	92	69	92	69	92	69	92	69	92	69
70	70	93	70	93	70	93	70	93	70	93	70
71	71	94	71	94	71	94	71	94	71	94	71
72	72	95	72	95	72	95	72	95	72	95	72
73	73	96	73	96	73	96	73	96	73	96	73
74	74	97	74	97	74	97	74	97	74	97	74
75	75	98	75	98	75	98	75	98	75	98	75
76	76	99	76	99	76	99	76	99	76	99	76
77	77	100	77	100	77	100	77	100	77	100	77


 JULY 1978
 B.C.L.P.

REGISTRATION		DOCUMENT	
NUMBER	DATE	DATE	NATURE AND PARTICULARS
F 41003	30-06-77	24-06-77	RIGHT OF WAY IN FAVOUR OF BENTON COLLEGE HUBBARD AND SHAWBURY AUTHORITY OVER THE PART DESCRIBED IN REFERENCED PLAN 131301.
F 41004	17-07-78	12-05-78	CASEMENT OVER PART SHOWN OUTLINED PER AN EXPLANATORY PLAN 18886. APPURTENANCE TO LOT "A" WITH PRIORITY OVER F 41003. SEE F 41003 AND F 41004. <i>See F 41003 and F 41004.</i>
F 41005	17-07-78	12-05-78	CASEMENT OVER PART SHOWN OUTLINED PER AN EXPLANATORY PLAN 18886. APPURTENANCE TO LOT "A" WITH PRIORITY OVER F 41003 AND F 41004. <i>See F 41003 and F 41004.</i>
9 88107	7/11/79	27/9/79	RIGHT OF WAY IN FAVOUR OF BENTON COLLEGE HUBBARD AND SHAWBURY AUTHORITY. <i>See F 41003 and F 41004.</i>
9 9518E	5/18/79	19/12/78	PERMISSION GRANTED OUTLINED PER INSTRUMENT 240300. <i>See F 41003 and F 41004.</i>
			Common Property Sheet Closed
			Search AL1003 of BC Online for Current Information from BC Reg. <i>See F 41003 and F 41004.</i>

Common Property Sheet C-223
 Search AL1003 of BC Online for Current Information from BC Reg. **Vr 563**
DEALINGS AFFECTING THE COMMON PROPERTY
 SHEET 8 OF 8 SHEETS
 STRATA PLAN
 Codebook 10/6/94

PLG
 JULY 1978
 R.C.L.S.

FILED VAVAS723 L80620 2003-10-14-15.33.07.025828

BC ONLINE LAND TITLE INTERNET SERVICE
PROVIDED IN CO-OPERATION WITH
LAND TITLE BRANCH - MINISTRY OF SUSTAINABLE RESOURCE MANAGEMENT

B.C. LAND TITLE BRANCH - DOCUMENT RETRIEVAL		WEB REQUEST
CLIENT NAME:	DYE & DURHAM COMPANY INC.	
ADDRESS:	10-820 ROYAL AVENUE NEW WESTMINSTER BC V3M 5Y4	
PICK-UP INSTRUCTIONS:		
USER ID:	APPLICATION NO.:	VA PAGES: 001
ACCOUNT NO.:	REQUESTED AT:	03-10-14 15:33
REFERENCE NO.:	FOLIO NO.:	
REMARKS:		

BC ONLINE LAND TITLE INTERNET SERVICE

HELP DESK VICTORIA (250) 953-8200
IN B.C. 1-800-663-6102
ADMINISTRATION OFFICE ... (250) 953-8250
FAX NUMBER (250) 953-8222

PERSONS WHO NEED TO RELY ON A PLAN FOR LEGAL PURPOSES MUST EXAMINE THE OFFICIAL VERSION AT THE LAND TITLE OFFICE IN WHICH THE PLAN IS DEPOSITED.

THE BYLAW AND COMMON PROPERTY SHEETS ATTACHED TO STRATA PLANS HAVE BEEN REPEALED. INFORMATION REGARDING THE BYLAWS AND/OR DEALINGS AFFECTING THE COMMON PROPERTY OF STRATA PLANS MUST BE OBTAINED FROM THE GENERAL INDEX AND/OR COMMON PROPERTY INDEX ON ALTOS. REFER TO THE BC ONLINE USER GUIDE FOR ACCESS INFORMATION.

09

RESUBDIVISION OF STRATA LOTS 42 AND 43

FRONT SHEET SHEET 1 OF 2 SHEETS
Vr 723

STRATA PLAN VR 723

Registered and recorded in the Land Registry Office of Vancouver, B.C. Vol. 2220, folio 112512X, dated 14th May 1999

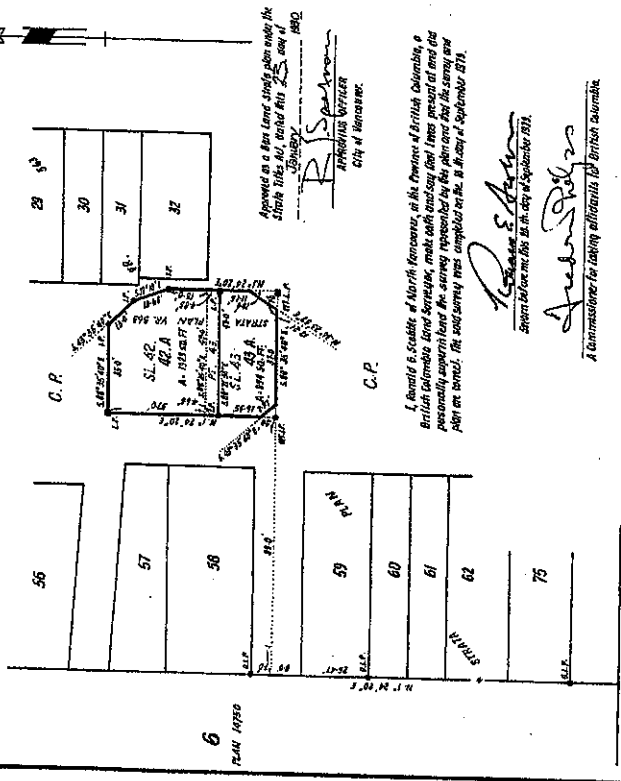
[Signature]
REGISTRAR

DISTRICT LOT 526

STRATA PLAN VR 563
CITY OF VANCOUVER
SCALE - 1 INCH = 30 FEET

LEGEND

- Buildings are as shown and are referred to by lot plan or S.S.
 - C.P. indicates proposed layout and area
 - L.L. indicates lot layout
 - W.L. indicates lot width
 - C.P. indicates common property
 - A indicates area
 - 43 indicates strata for number (typical)
- The address for service of documents on the strata corporation is:
THE MANAGER, STRATA PLAN VR 723,
1000 BUREAU STREET,
VANCOUVER, B.C.
- The name of the Strata development is, **AMBURUS WALLACE III**
The civic addresses are, **SL 42 A - 680 PARLIAMENT DRIVE,
SL 43 A - 680 PARLIAMENT DRIVE.**



Approved as a Plan under the Strata Property Act, British Columbia, by the City of Vancouver, B.C. on 14th May 1999.
[Signature]
CITY OF VANCOUVER

I, *[Signature]*, of the Province of British Columbia, a British Columbia Land Surveyor, make oath and say that I am a duly qualified and licensed Land Surveyor and that the survey and plan are correct and true and that I am a duly qualified and licensed Land Surveyor in the City of Vancouver, B.C.

[Signature]
Approved for the City of Vancouver, B.C. on 14th May 1999.

[Signature]
A Commissioner for taking affidavits in British Columbia.

CONSTRUCTION ASSOCIATES
SURVEYORS & ENGINEERS
100 WESTMINSTER, B.C.

2
PLAN 14930

PAGE 2

STRATA TITLES ACT.

LOT NO.	SHEET NO.	FORM 1		FORM 2		FORM 3	
		SCHEDULE OF UNIT ENTITLEMENT.	UNIT ENTITLEMENT.	SCHEDULE OF INTEREST UPON DISTRIBUTION	INTEREST UPON DISTRIBUTION	SCHEDULE OF VOTING RIGHTS	NUMBER OF VOTES
42 A	1						
42 B	1						
RESERVE							

Accepted, each Form 1 and 2
this 20.2 day of DECEMBER 1992

John M. Adams
SUPERINTENDENT OF REGISTRARS.

STATUTORY DECLARATION

I, the undersigned in submitting declare that,
1. I, the undersigned am the owner-developer.
2. The Strata plan is validly for registration in
I make this solemn declaration conscientiously knowing the contents thereof and knowing that it is an offence to make a false declaration before me of the contents of a document.
I declare before me on this 20.2 day of DECEMBER 1992
A Commissioner for the Registrar-General of the Registrar-General of British Columbia.

WARD DEVELOPMENTS LTD
Michael Leonard
Secretary

SIGNATURES AS REQUIRED (SECTION 3 (5)(d))

OWNER - DEVELOPER
WARD DEVELOPMENTS LTD
Michael Leonard
Secretary

MARRIAGEE
THE MERCANTILE BANK OF CANADA

FIRST CITY INVESTMENTS LTD

CITY SHIPWAYS AND TRUST COMPANY

CARRIDA PERMANENT TRUST
COMPANY
Calvin M. ...
AUTHORISED SIGNATORY