

**STRATA PLAN OF LOT F, BLOCK 121,
DISTRICT LOT 541, GROUP 1, N. W. D.,
PLAN BCP 26356**

SHEET 1 OF 35 SHEETS.
**STRATA PLAN
BCS 2495**

INTEGRATED SURVEY AREA NO. 31,
CITY OF VANCOUVER, NAD83 (CSRS)
B. C. G. S. 92G.025

DEPOSITED AND REGISTERED IN THE
LAND TITLE OFFICE AT NEW WESTMINSTER, B. C.
THIS 24 DAY OF **AUGUST, 2007**

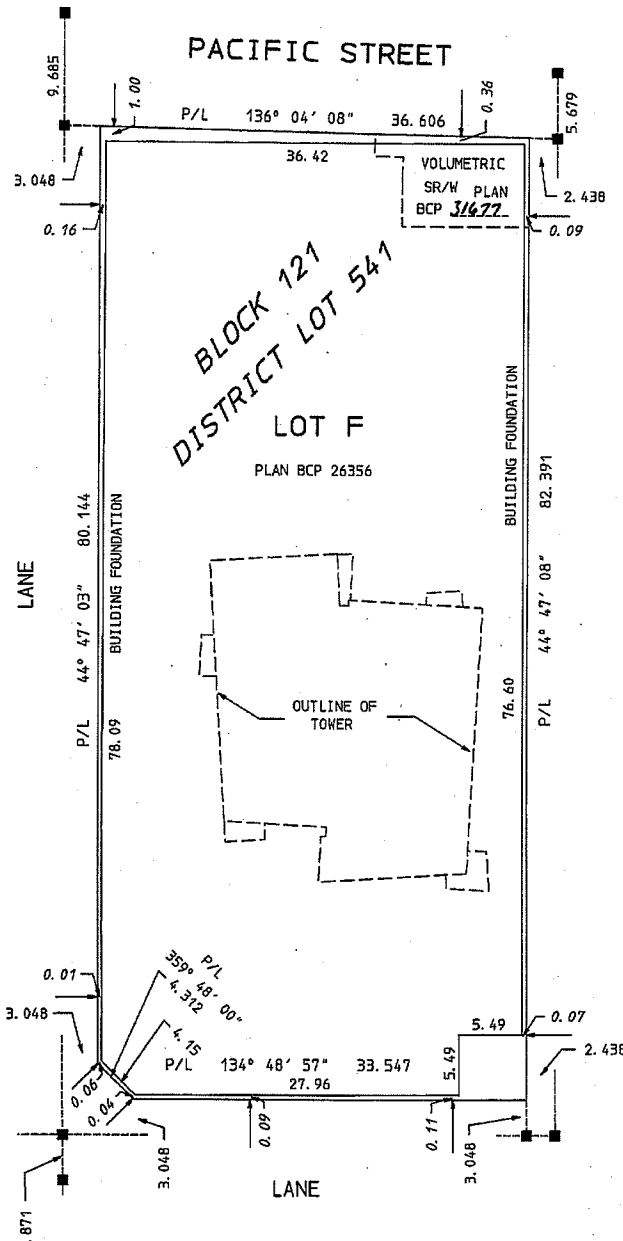
SCALE: 1 : 400
ALL DISTANCES SHOWN ARE IN METRES



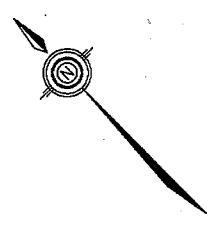
CIVIC ADDRESSES ARE:
1437 - 1473 HOWE STREET,
VANCOUVER, B. C.
V6Z 1C2
AND
804 - 810 PACIFIC STREET,
VANCOUVER, B. C.
V6Z 1C2

BUILDING FOUNDATION CLEARANCES
HAVE BEEN EXAGGERATED FOR CLARITY.

- LEGEND**
BEARINGS ARE GRID AND ARE
DERIVED FROM PLAN BCP 26356.
- SL DENOTES STRATA LOT
 - C DENOTES COMMON PROPERTY
 - A DENOTES AREA
 - LCP DENOTES LIMITED COMMON PROPERTY
 - PT DENOTES PART
 - m2 DENOTES SQUARE METRES
 - DENOTES IRON PIN FOUND
 - DENOTES LEAD PLUG FOUND
 - DENOTES LEAD PLUG SET
 - BAL DENOTES BALCONY
 - OPEN DENOTES OPEN TO BELOW
 - ELEV DENOTES ELEVATOR
 - ELEC DENOTES ELECTRICAL ROOM
 - MECH DENOTES MECHANICAL ROOM
 - TEL DENOTES TELEPHONE ROOM
 - O/A DENOTES OVERALL
 - P/L DENOTES PROPERTY LINE



Jan Macdonald LCP
REGISTRAR
BBS40736-874



OWNER - DEVELOPER
QUALEX-LANDMARK PROJECTS INC.

M. Eshandi
AUTHORIZED SIGNATORY
MOHAMMED ESFANDI
PRINT NAME

WITNESS AS TO
QUALEX-LANDMARK PROJECTS INC.

Shannon Michajluszyn
SIGNATURE
SHANNON MICHAJLUSZYN
PRINT NAME
OCCUPATION: **EXEC. ASSISTANT**

ADDRESS OF WITNESS: **740-1111 MELVILLE ST.
VANCOUVER BC V6E 3V6**

FORM S
ENDORSEMENT OF NONOCCUPANCY

I, B. J. OKE, A BRITISH COLUMBIA
LAND SURVEYOR, CERTIFY THAT THE BUILDINGS
INCLUDED IN THIS STRATA PLAN HAVE NOT,
AS OF JULY 16th, 2007, BEEN PREVIOUSLY
OCCUPIED.

[Signature]
B. C. L. S.

FORM U
ENDORSEMENT OF SURVEYOR

I, B. J. OKE, A BRITISH COLUMBIA
LAND SURVEYOR, CERTIFY THAT THE BUILDINGS
SHOWN ON THIS STRATA PLAN ARE WITHIN THE
EXTERNAL BOUNDARIES OF THE LAND THAT IS
THE SUBJECT OF THE STRATA PLAN.

JULY 16th, 2007
DATE
[Signature]
B. C. L. S.

FORM 9
(SECTION 67 (1))
STATEMENT BY SURVEYOR

I, B. J. OKE, A BRITISH COLUMBIA
LAND SURVEYOR, OF THE CITY OF VANCOUVER, IN
BRITISH COLUMBIA, CERTIFY THAT I WAS PRESENT
AT AND PERSONALLY SUPERINTENDED THE SURVEY
REPRESENTED BY THIS PLAN AND THAT THE SURVEY
AND PLAN ARE CORRECT. THE FIELD SURVEY WAS
COMPLETED ON THE 20th DAY OF JUNE, 2007.
THE PLAN WAS COMPLETED AND CHECKED, AND THE
CHECKLIST FILED UNDER No. 67614, ON THE
17th DAY OF JULY, 2007.

[Signature]
B. C. L. S.

MORTGAGEE:
BANK OF MONTREAL

AUTHORIZED SIGNATORY
[Signature]
JOY WATSON, ACCOUNT MANAGER
PRINT NAME

AUTHORIZED SIGNATORY
[Signature]
ANNI NORRAND, MANAGER CUSTOMER SERVICE
PRINT NAME

WITNESS AS TO
BANK OF MONTREAL

[Signature]
SIGNATURE
BRENDA SHEERIN
PRINT NAME
OCCUPATION: **CLIENT SERVICE OFFICER**

ADDRESS OF WITNESS: **6th FLR
595 BUREAU ST
VANCOUVER BC V7X 1L5**

MORTGAGEE:
LAURENTIAN BANK OF CANADA

AUTHORIZED SIGNATORY
[Signature]
GEOFF TALLEFER
PRINT NAME

AUTHORIZED SIGNATORY
[Signature]
AL BOND
PRINT NAME

WITNESS AS TO
LAURENTIAN BANK OF CANADA

[Signature]
SIGNATURE
ANTONIA LAM
PRINT NAME
OCCUPATION: **ADMINISTRATOR**

ADDRESS OF WITNESS: **#603-700W. GEORGIA ST.
VANCOUVER BC V7Y 1A1**

MORTGAGEE:
LOMBARD GENERAL INSURANCE COMPANY OF CANADA

[Signature]
AUTHORIZED SIGNATORY
Tom Reeves
PRINT NAME

AUTHORIZED SIGNATORY

PRINT NAME

WITNESS AS TO
LOMBARD GENERAL INSURANCE COMPANY OF CANADA

[Signature]
SIGNATURE
VICTORIA ALCOCK
PRINT NAME
OCCUPATION: **SUPERVISOR**

ADDRESS OF WITNESS: **STES05
555 BUREAU STREET
VANCOUVER BC V7X 1M8**

BALCONY, PATIO AND DECK AREAS
ARE DEFINED AS TO HEIGHT BY
THE CENTRE OF THE FLOOR ABOVE
OR ITS EXTENSIONS, OR WHERE
THERE IS NO FLOOR ABOVE, BY
THE AVERAGE HEIGHT OF A STRATA
LOT WITHIN THE SAME BUILDING,
UNLESS OTHERWISE NOTED.

THIS PLAN LIES WITHIN
THE GREATER VANCOUVER
REGIONAL DISTRICT.

HERMON & OKE.
B. C. LAND SURVEYORS
1116 HORNBY STREET,
VANCOUVER, B. C. V6Z 1V8
Ph. 604-687-6841
V. 2004: 2004-165. S1
S-10775
J-2004-165 FIELD NOTES IN JOB FILE

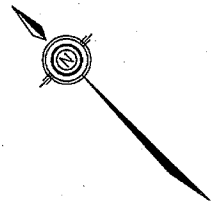
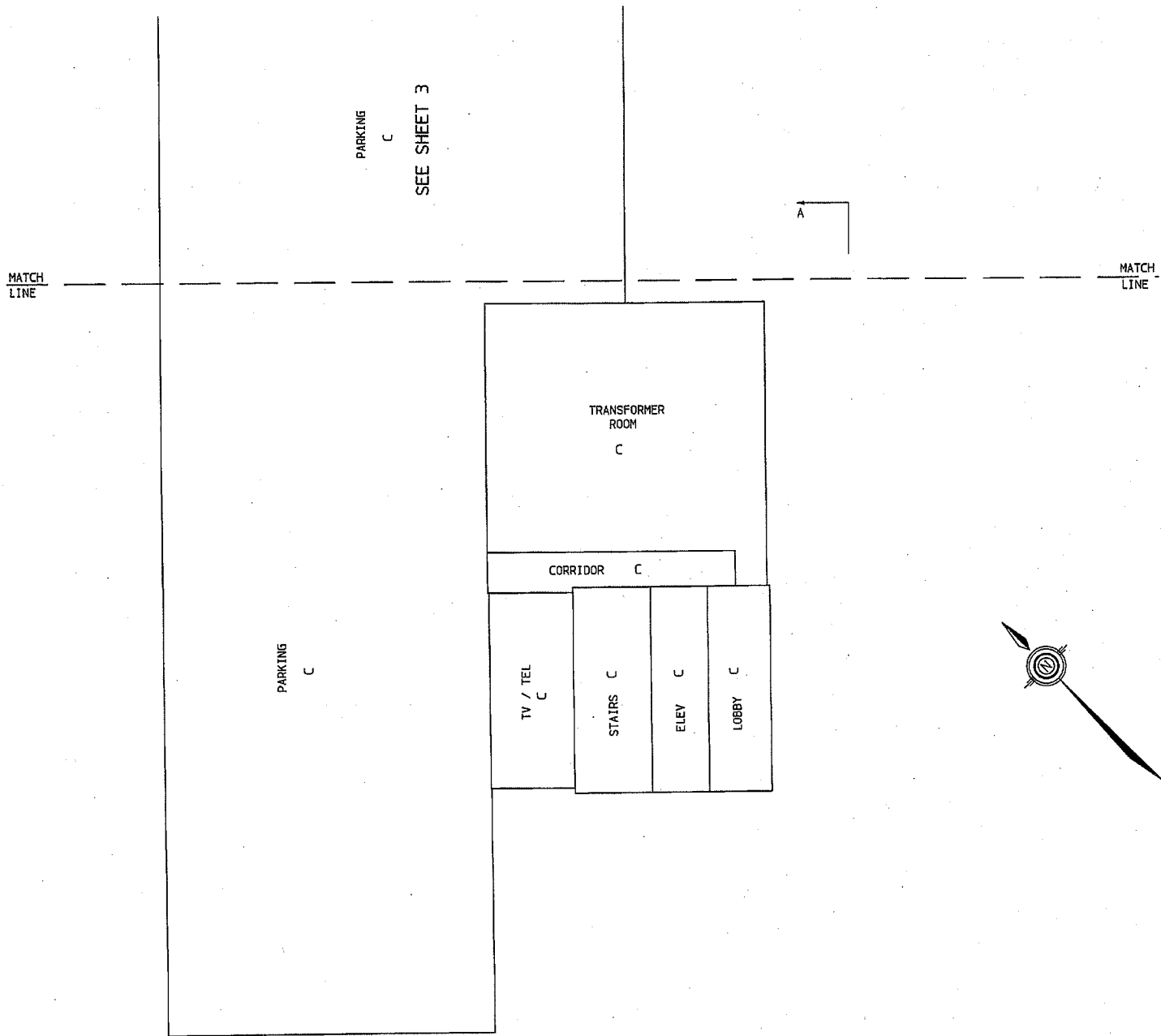
SOUTHERLY PART OF PARKING LEVEL P3

SCALE : 1 : 150
ALL DISTANCES SHOWN ARE IN METRES



SHEET 2 OF 35 SHEETS.

STRATA PLAN
BCS 2495



JULY 16th, 2007

V: 2004: 2004-145. S2



S-10775

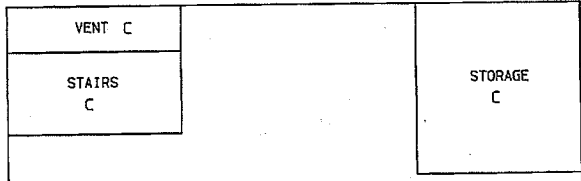
NORTHERLY PART OF PARKING LEVEL P3

SHEET 3 OF 35 SHEETS.
STRATA PLAN
BCS 2495

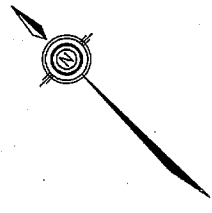
SCALE : 1 : 150
ALL DISTANCES SHOWN ARE IN METRES



A



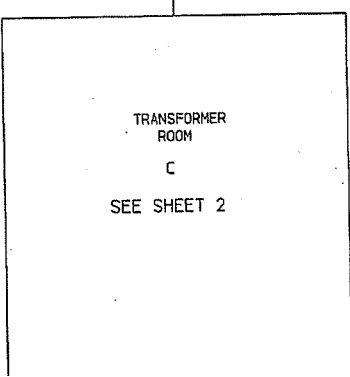
PARKING C



MATCH LINE

MATCH LINE

PARKING C
SEE SHEET 2



A

JULY 16th, 2007

v. 2004: 2004-165. S3

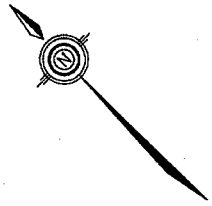
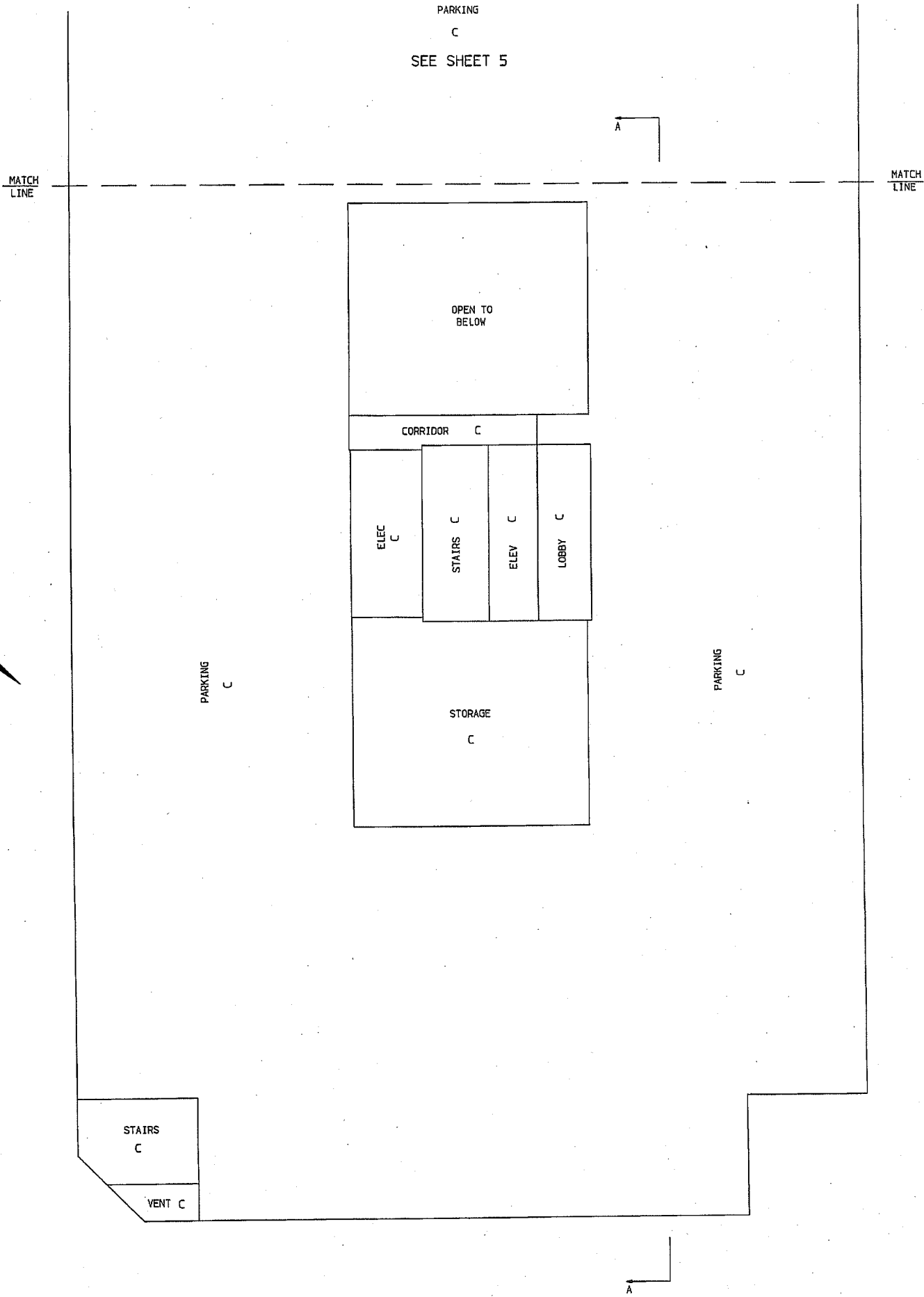
S-10775

SOUTHERLY PART OF PARKING LEVEL P2

SHEET 4 OF 35 SHEETS.

STRATA PLAN
BCS 2495

SCALE : 1 : 150
ALL DISTANCES SHOWN ARE IN METRES



JULY 16th, 2007

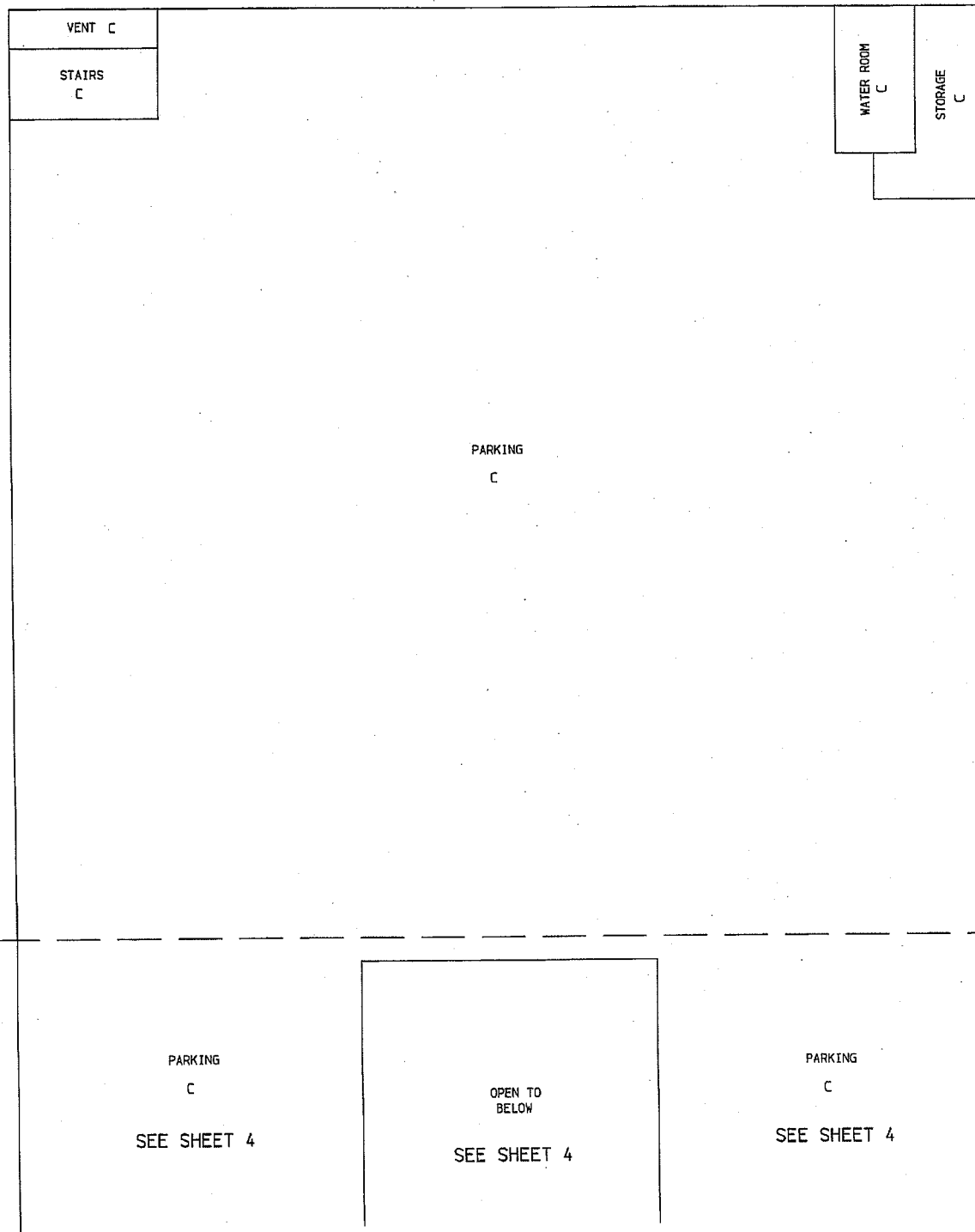
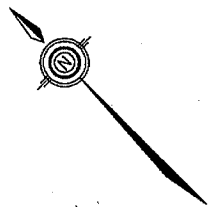
V: 2004: 2004-165. S4

S-10775

NORTHERLY PART OF PARKING LEVEL P2

SHEET 5 OF 35 SHEETS.
STRATA PLAN
BCS 2495

SCALE: 1 : 150
ALL DISTANCES SHOWN ARE IN METRES



JULY 16th, 2007

V: 2004: 2004-165.55

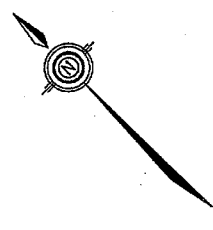
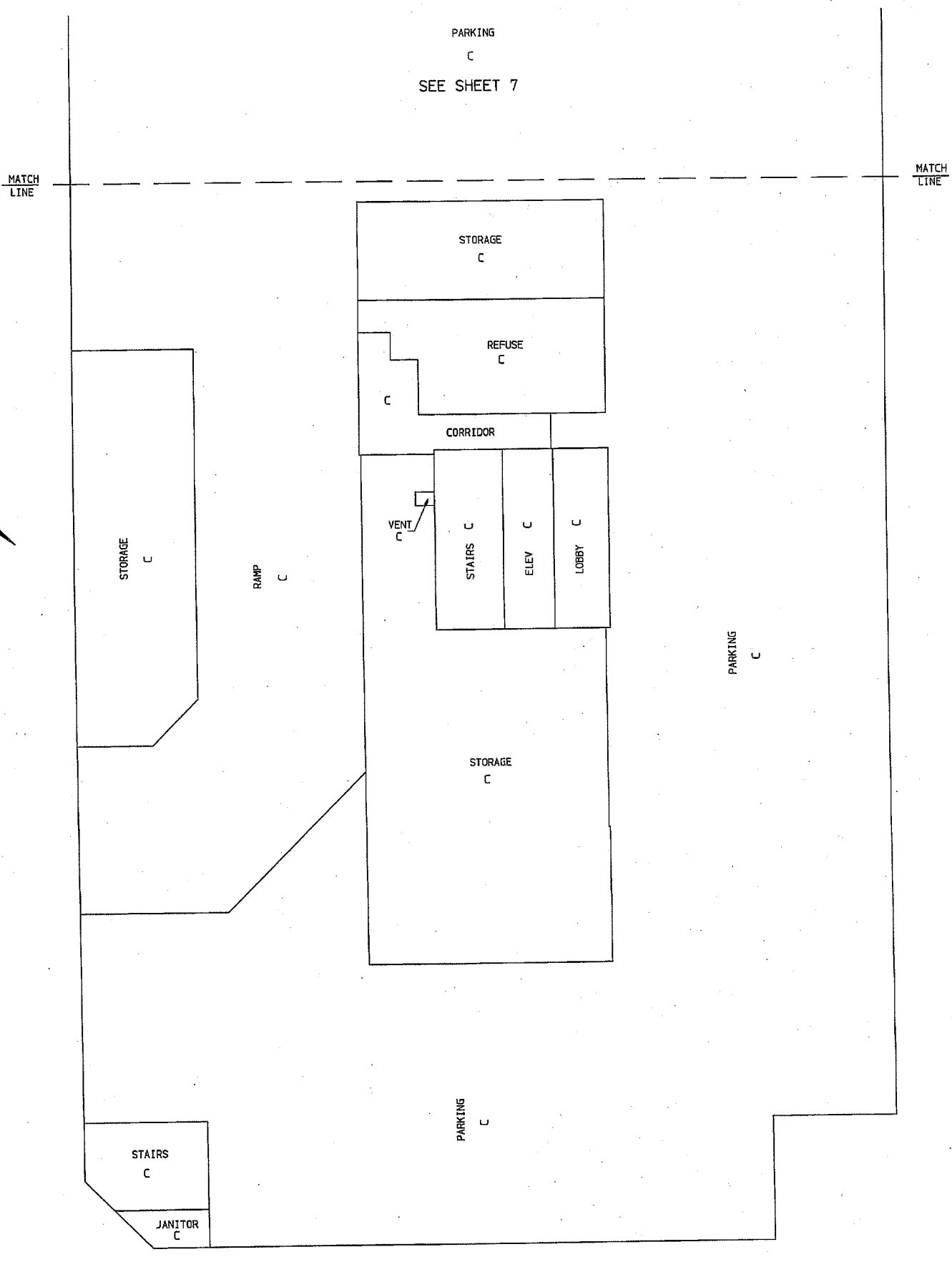


S-10775

SOUTHERLY PART OF PARKING LEVEL P1

SHEET 6 OF 35 SHEETS.
STRATA PLAN
BCS 2495

SCALE : 1 : 150
ALL DISTANCES SHOWN ARE IN METRES



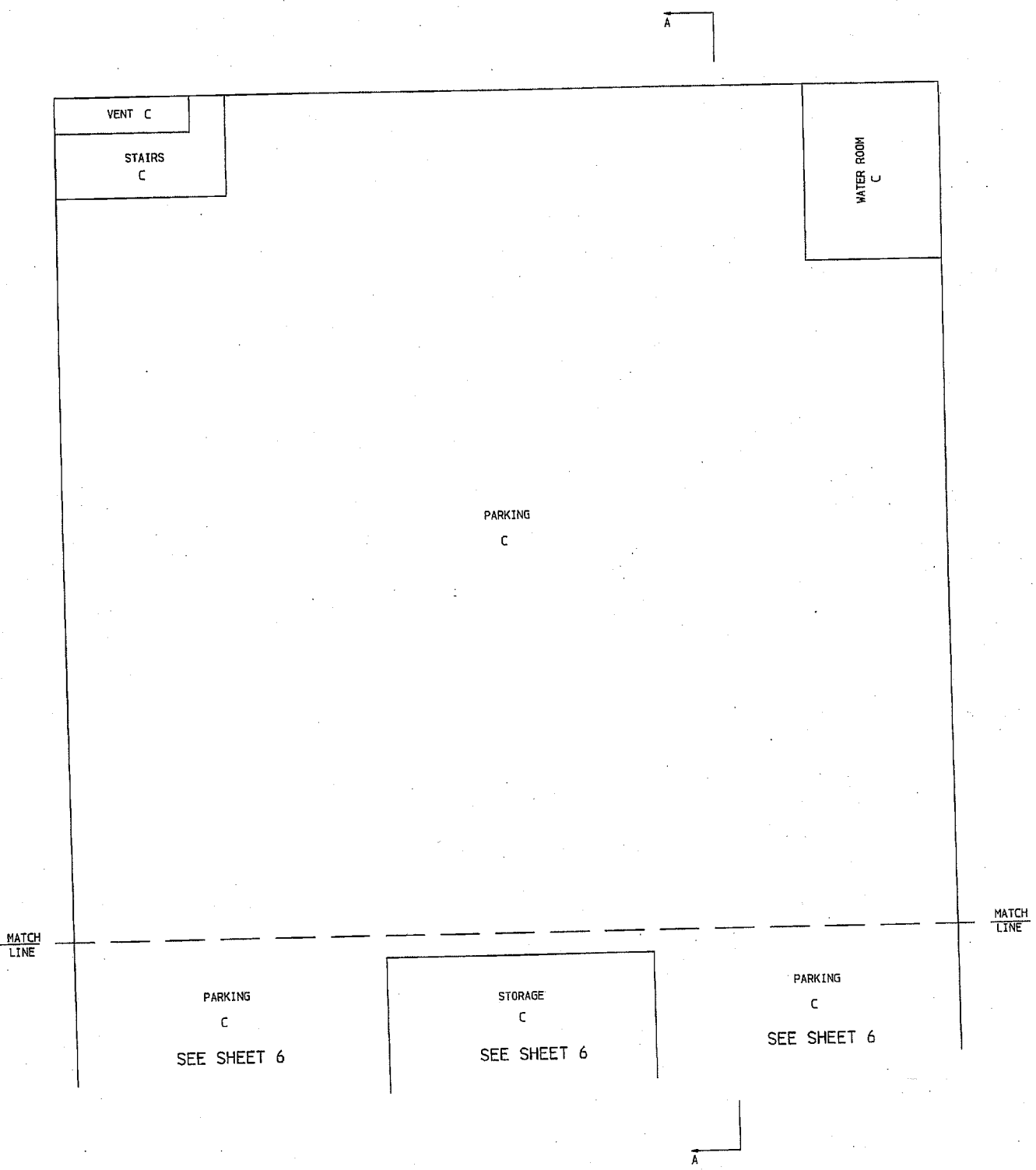
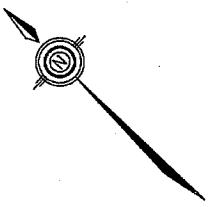
JULY 16th, 2007

V: 2004: 2004-165. 56 S-10775

NORTHERLY PART OF PARKING LEVEL P1


SHEET 7 OF 35 SHEETS.
STRATA PLAN
BCS 2495

SCALE : 1 : 150
ALL DISTANCES SHOWN ARE IN METRES



JULY 16th, 2007

V: 2004: 2004-165. S7

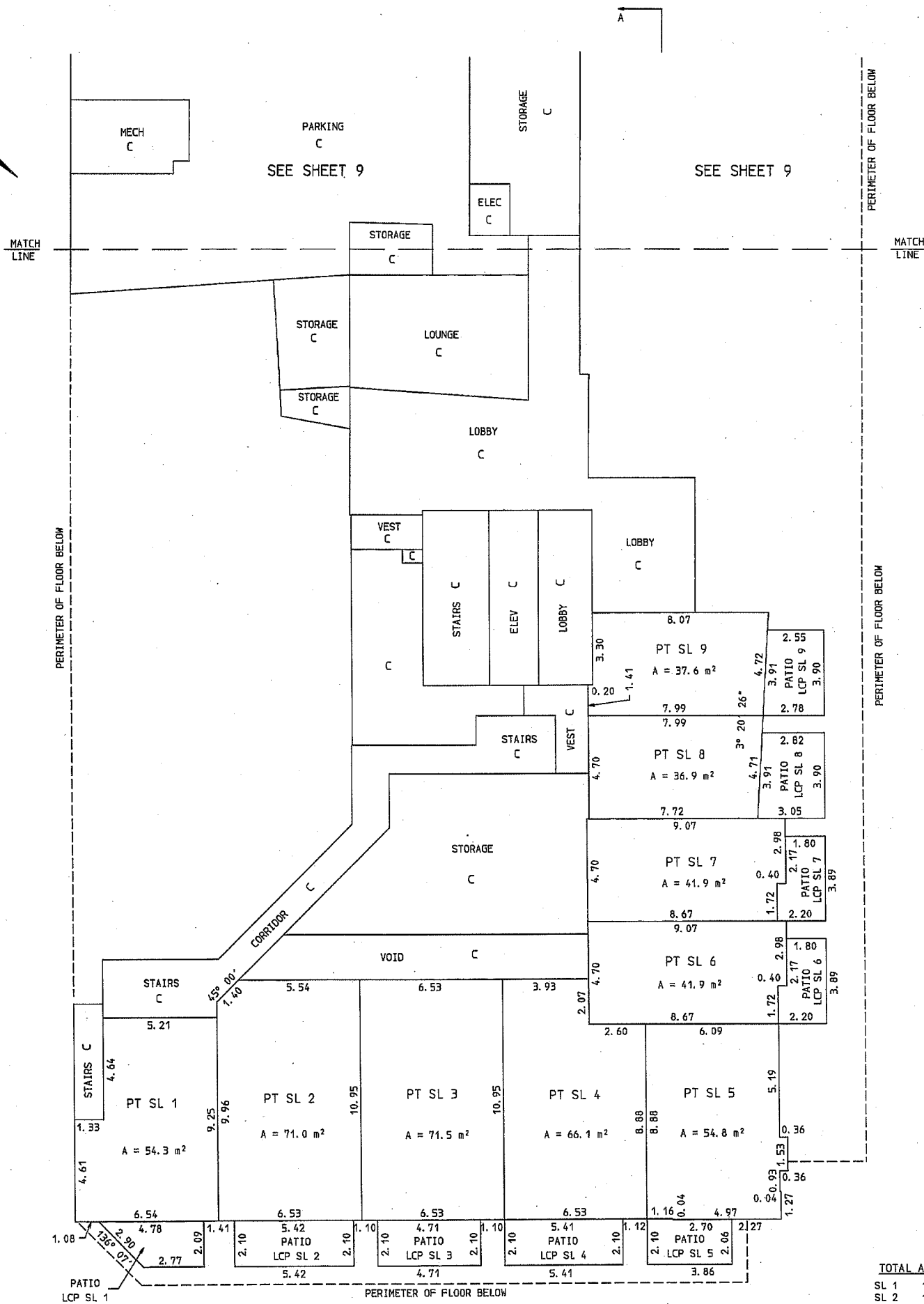
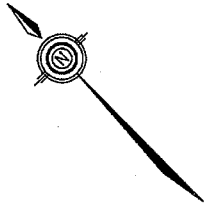
 S-10775

SOUTHERLY PART OF MAIN FLOOR

SHEET 8 OF 35 SHEETS.

SCALE : 1 : 150
ALL DISTANCES SHOWN ARE IN METRES

STRATA PLAN
BCS 2495



TOTAL AREAS

SL 1	110.6 m ²
SL 2	136.9 m ²
SL 3	138.7 m ²
SL 4	126.7 m ²
SL 5	105.9 m ²
SL 6	105.0 m ²
SL 7	109.7 m ²
SL 8	103.7 m ²
SL 9	104.3 m ²

FOR THE PURPOSES OF AREA CALCULATIONS,
WALLS ARE ASSUMED TO BE 0°, 90°, OR AS NOTED

JULY 16th, 2007

V. 2004; 2004-165. SB

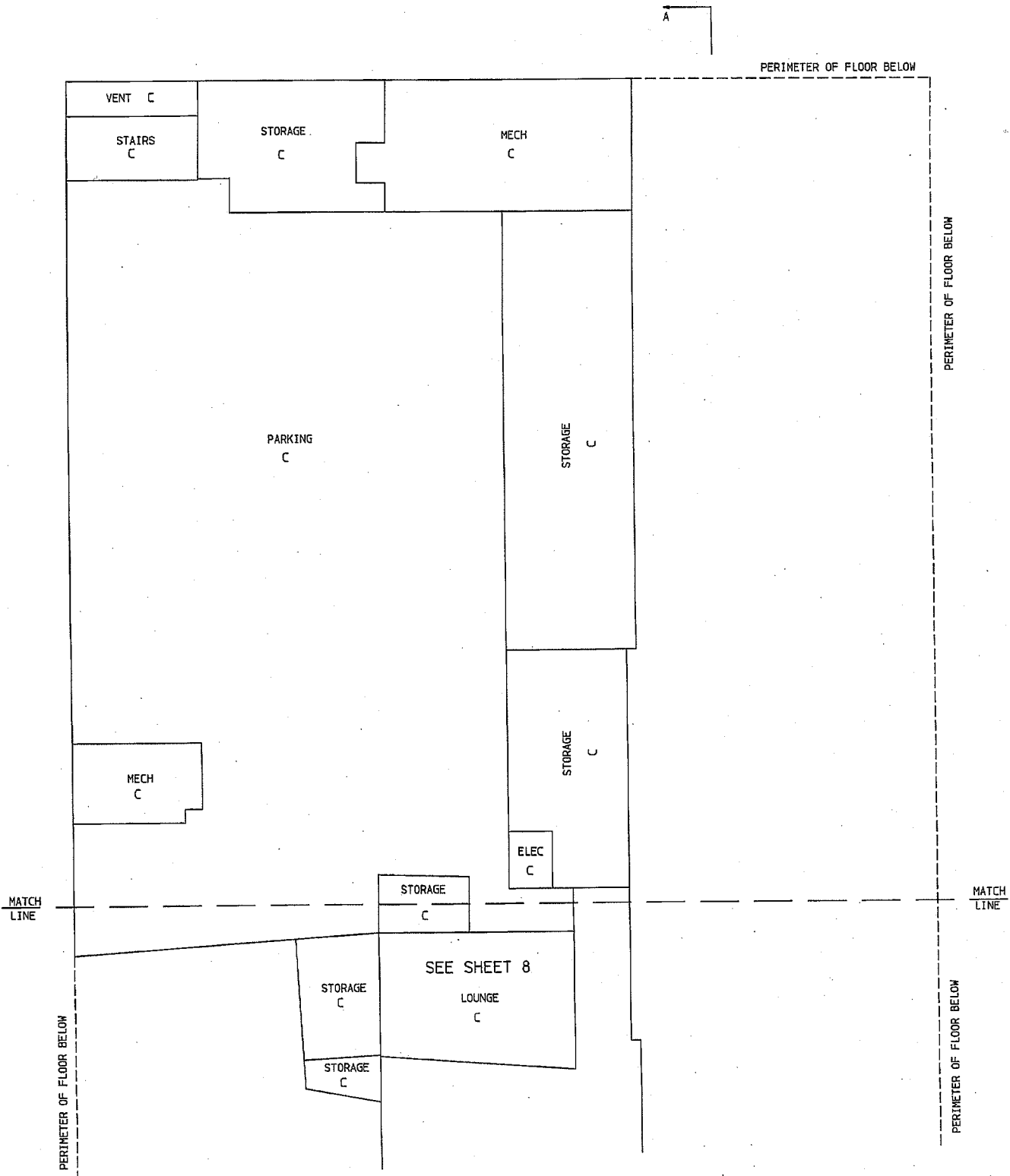
S-10775

NORTHERLY PART OF MAIN FLOOR

SCALE : 1 : 150
ALL DISTANCES SHOWN ARE IN METRES



SHEET 9 OF 35 SHEETS.
STRATA PLAN
BCS 2495



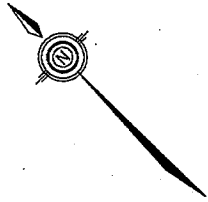
JULY 16th, 2007

V: 2004: 2004-165. 59

S-10775

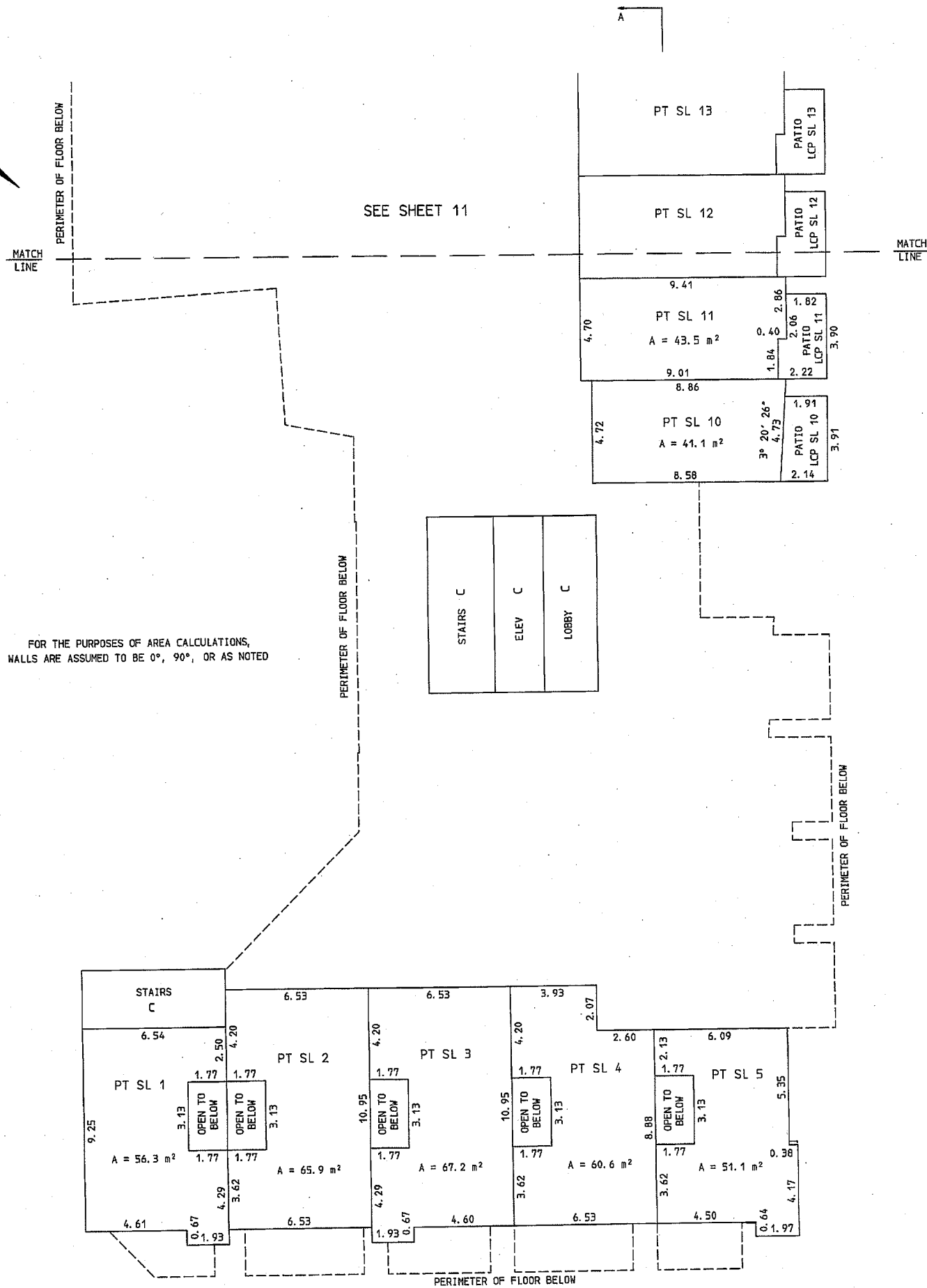
SOUTHERLY PART OF MEZZANINE

SCALE : 1 : 150
ALL DISTANCES SHOWN ARE IN METRES



SHEET 10 OF 35 SHEETS.

STRATA PLAN
BCS 2495



TOTAL AREAS

SL 10	106.0 m ²
SL 11	102.1 m ²

JULY 16th, 2007

V: 2004: 2004-165. S10

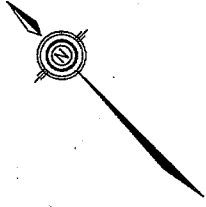
S-10775

NORTHERLY PART OF MEZZANINE

SHEET 11 OF 35 SHEETS.

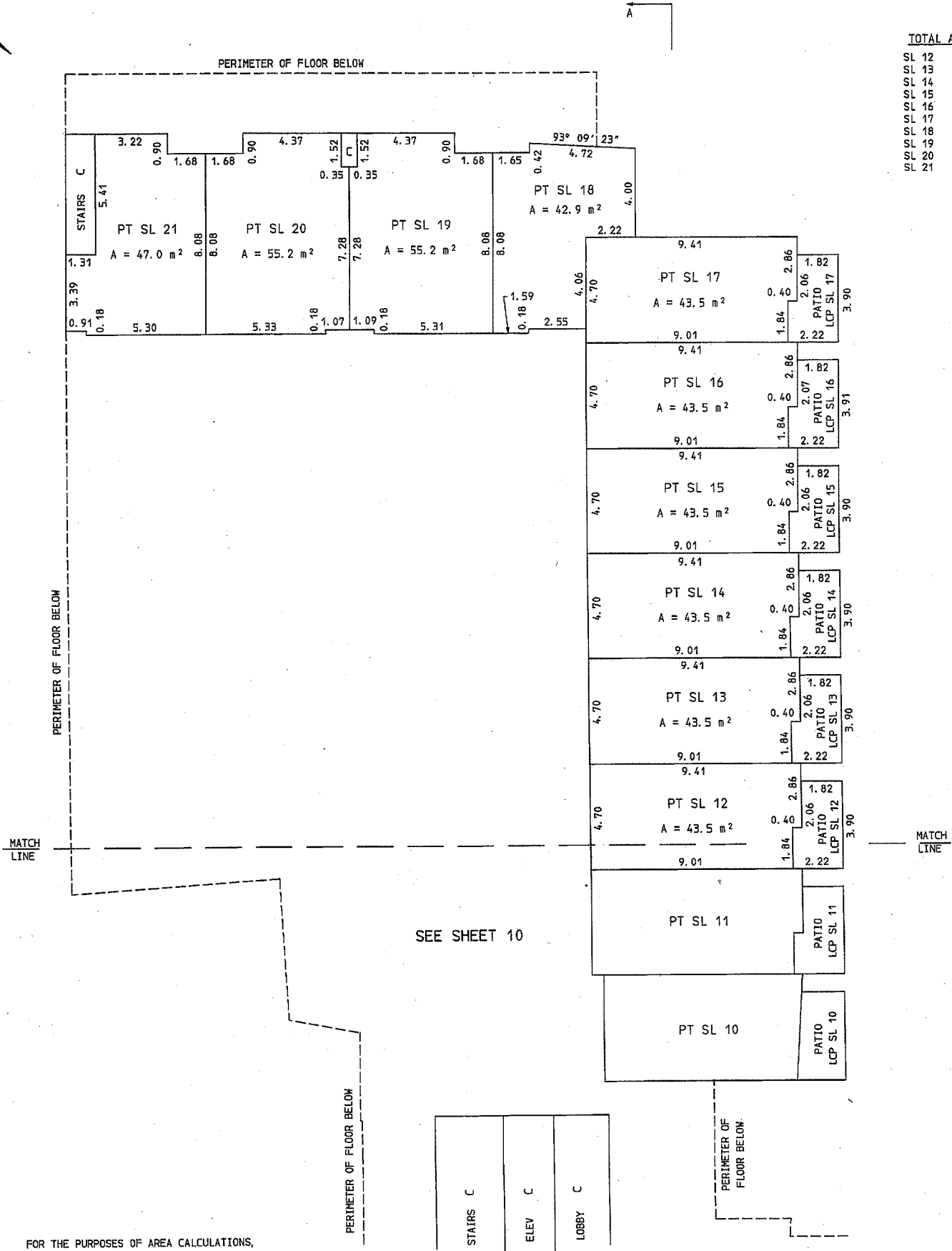
STRATA PLAN
BCS 2495

SCALE : 1 : 150
ALL DISTANCES SHOWN ARE IN METRES



TOTAL AREAS

SL 12	110.7 m ²
SL 13	110.7 m ²
SL 14	110.8 m ²
SL 15	110.8 m ²
SL 16	110.9 m ²
SL 17	108.5 m ²
SL 18	125.1 m ²
SL 19	148.9 m ²
SL 20	148.8 m ²
SL 21	135.2 m ²



FOR THE PURPOSES OF AREA CALCULATIONS,
WALLS ARE ASSUMED TO BE 0°, 90°, OR AS NOTED

JULY 16th, 2007

V: 2004; 2004-165.511

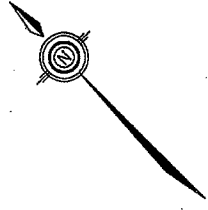
S-10775

SOUTHERLY PART OF SECOND FLOOR

SHEET 12 OF 35 SHEETS.

STRATA PLAN
BCS 2495

SCALE : 1 : 150
ALL DISTANCES SHOWN ARE IN METRES



SEE SHEET 13

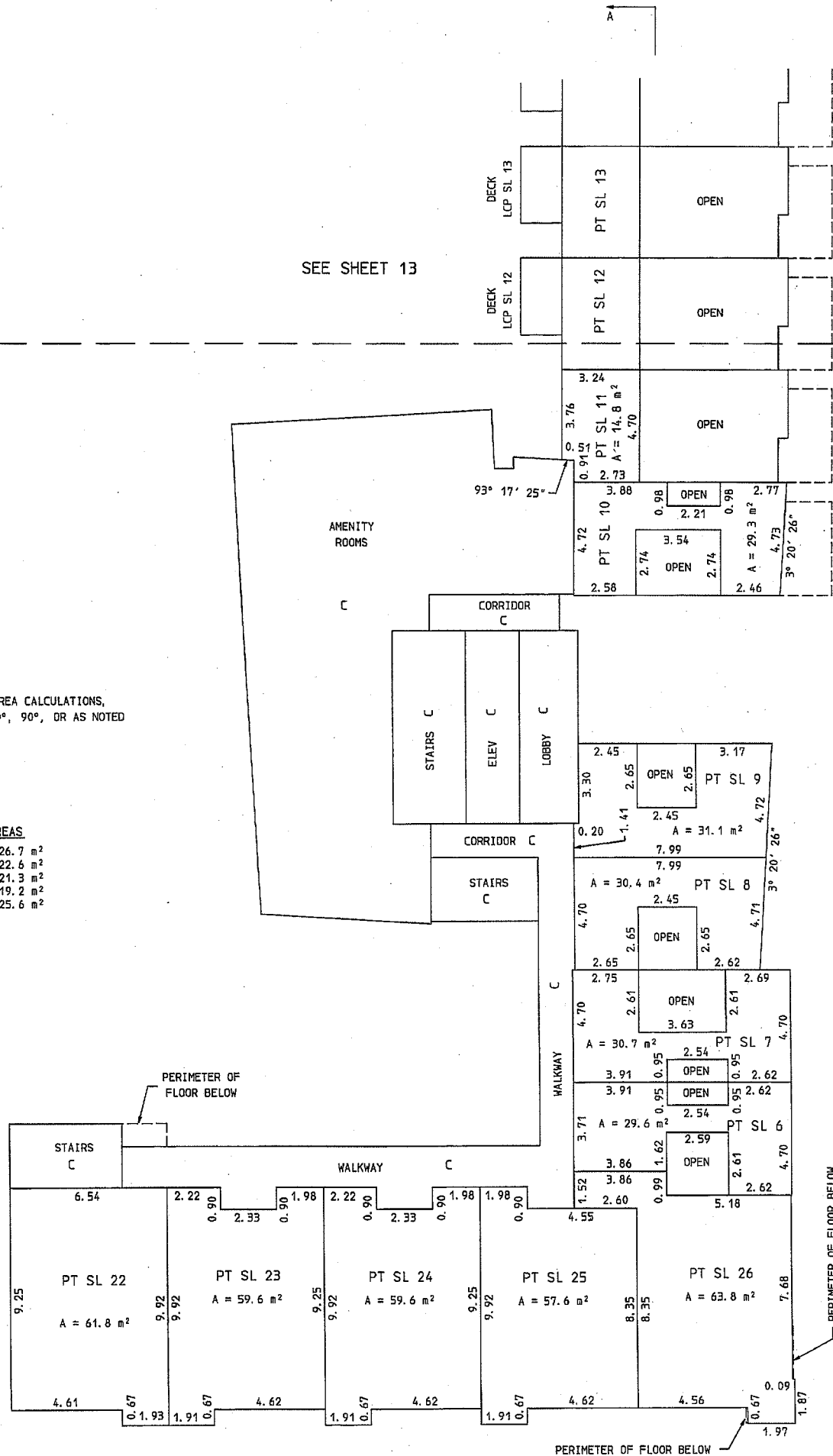
MATCH LINE

MATCH LINE

FOR THE PURPOSES OF AREA CALCULATIONS,
WALLS ARE ASSUMED TO BE 0°, 90°, OR AS NOTED

TOTAL AREAS

SL 22	126.7 m ²
SL 23	122.6 m ²
SL 24	121.3 m ²
SL 25	119.2 m ²
SL 26	125.6 m ²



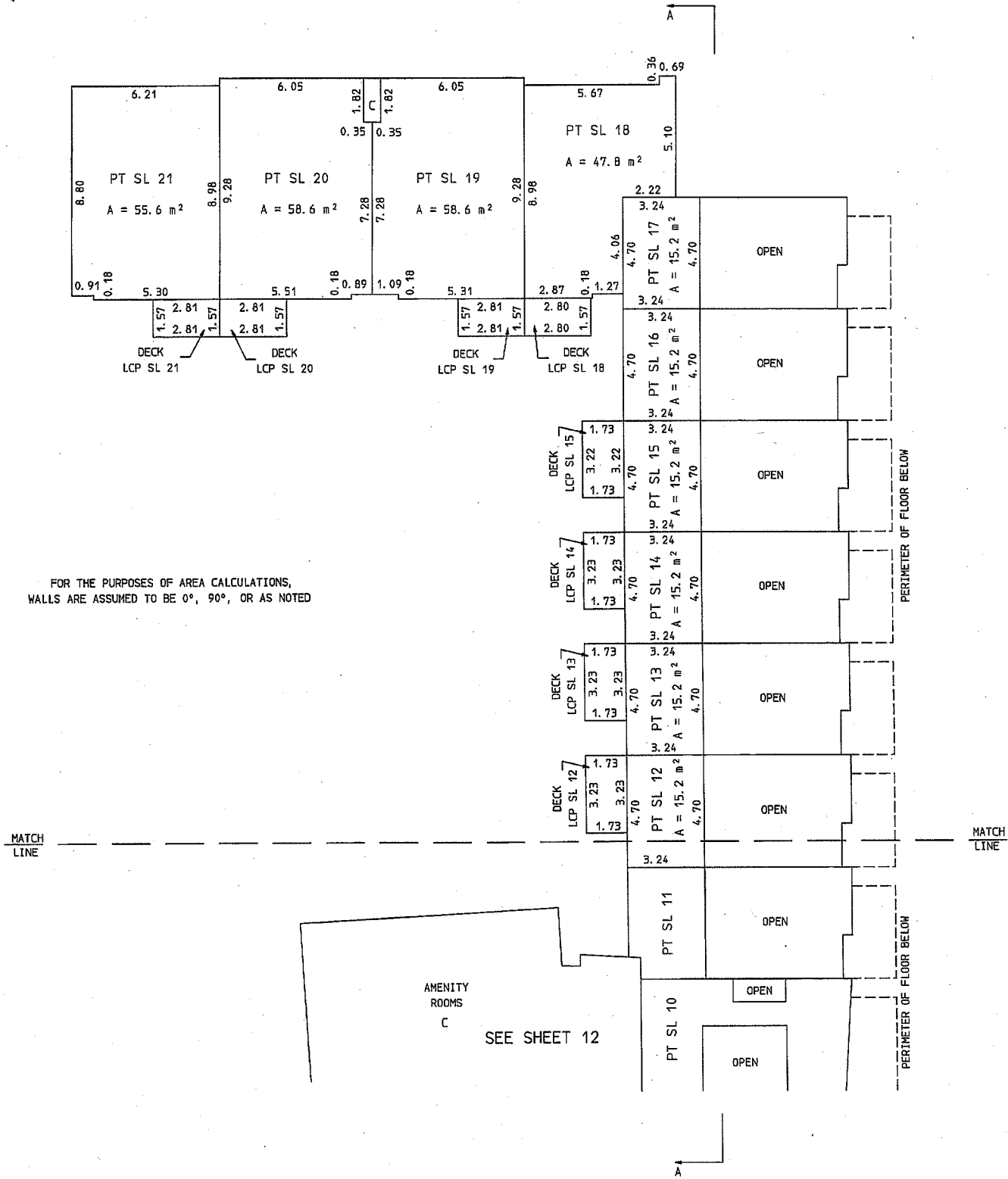
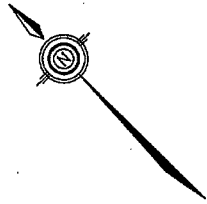
NORTHERLY PART OF SECOND FLOOR

SHEET 13 OF 35 SHEETS.

SCALE : 1 : 150
ALL DISTANCES SHOWN ARE IN METRES



STRATA PLAN
BCS 2495



JULY 16th, 2007

V: 2004: 2004-165, S13

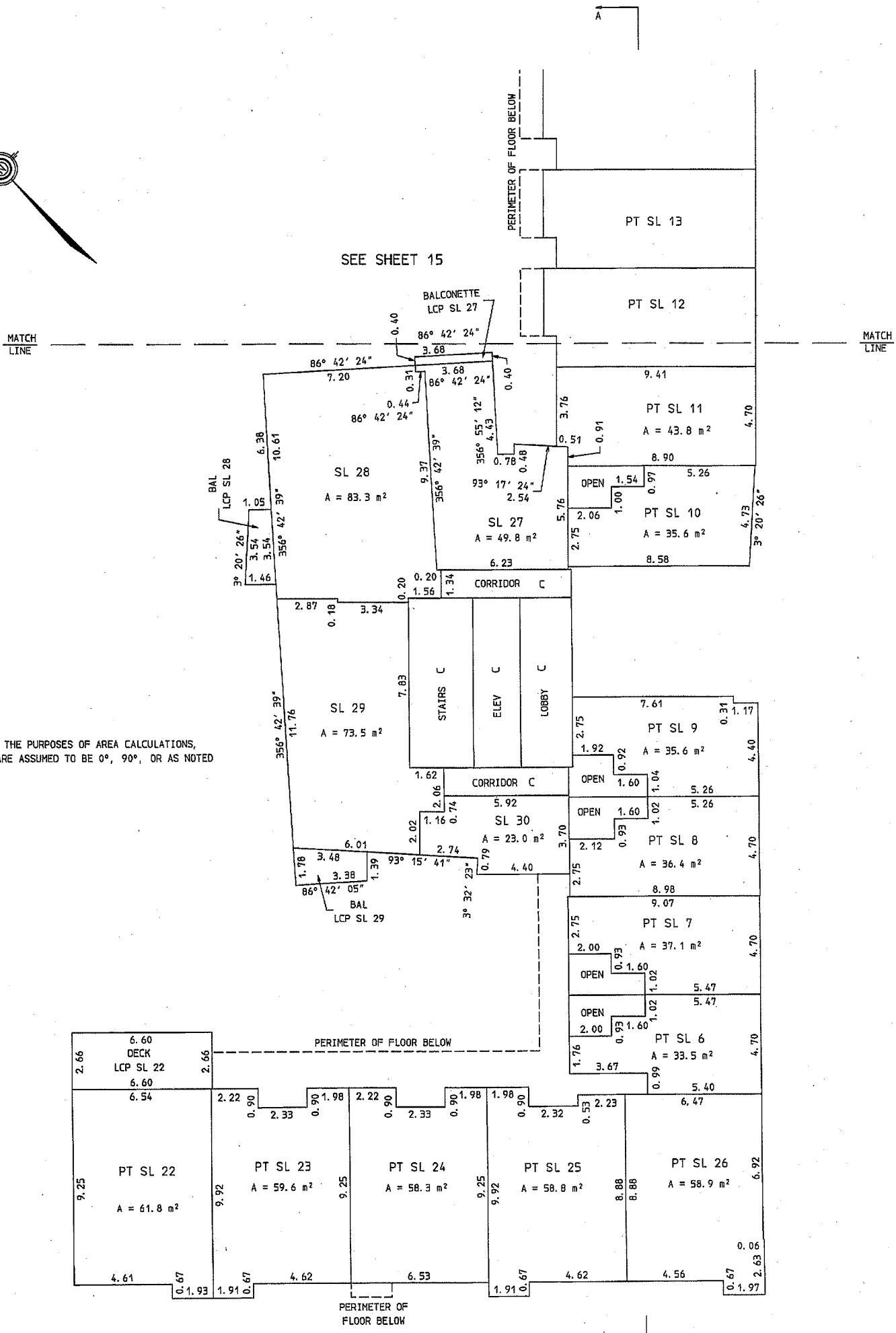
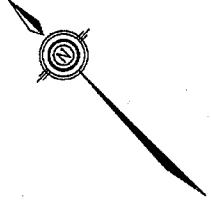
S-10775

SOUTHERLY PART OF THIRD FLOOR

SHEET 14 OF 35 SHEETS.

STRATA PLAN
BCS 2495

SCALE : 1 : 150
ALL DISTANCES SHOWN ARE IN METRES



FOR THE PURPOSES OF AREA CALCULATIONS,
WALLS ARE ASSUMED TO BE 0°, 90°, OR AS NOTED

JULY 16th, 2007

V: 2004; 2004-165. S14

S-10775

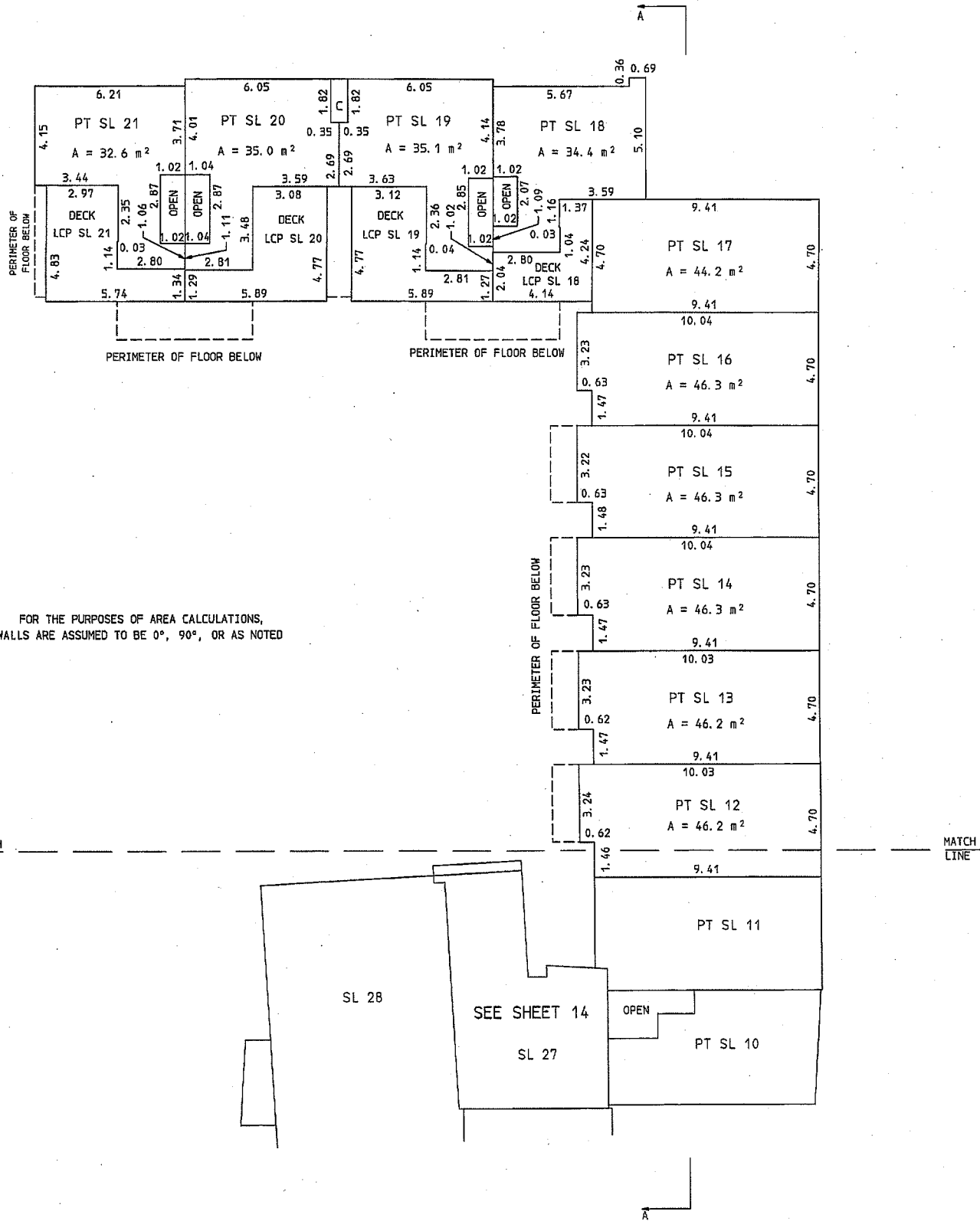
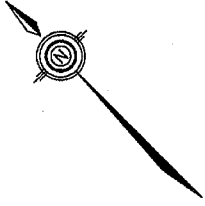
FILED: 2007-08-07 10:08:53 AM

NORTHERLY PART OF THIRD FLOOR

SHEET 15 OF 35 SHEETS.

SCALE : 1 : 150
ALL DISTANCES SHOWN ARE IN METRES

STRATA PLAN
BCS 2495



FOR THE PURPOSES OF AREA CALCULATIONS,
WALLS ARE ASSUMED TO BE 0°, 90°, OR AS NOTED

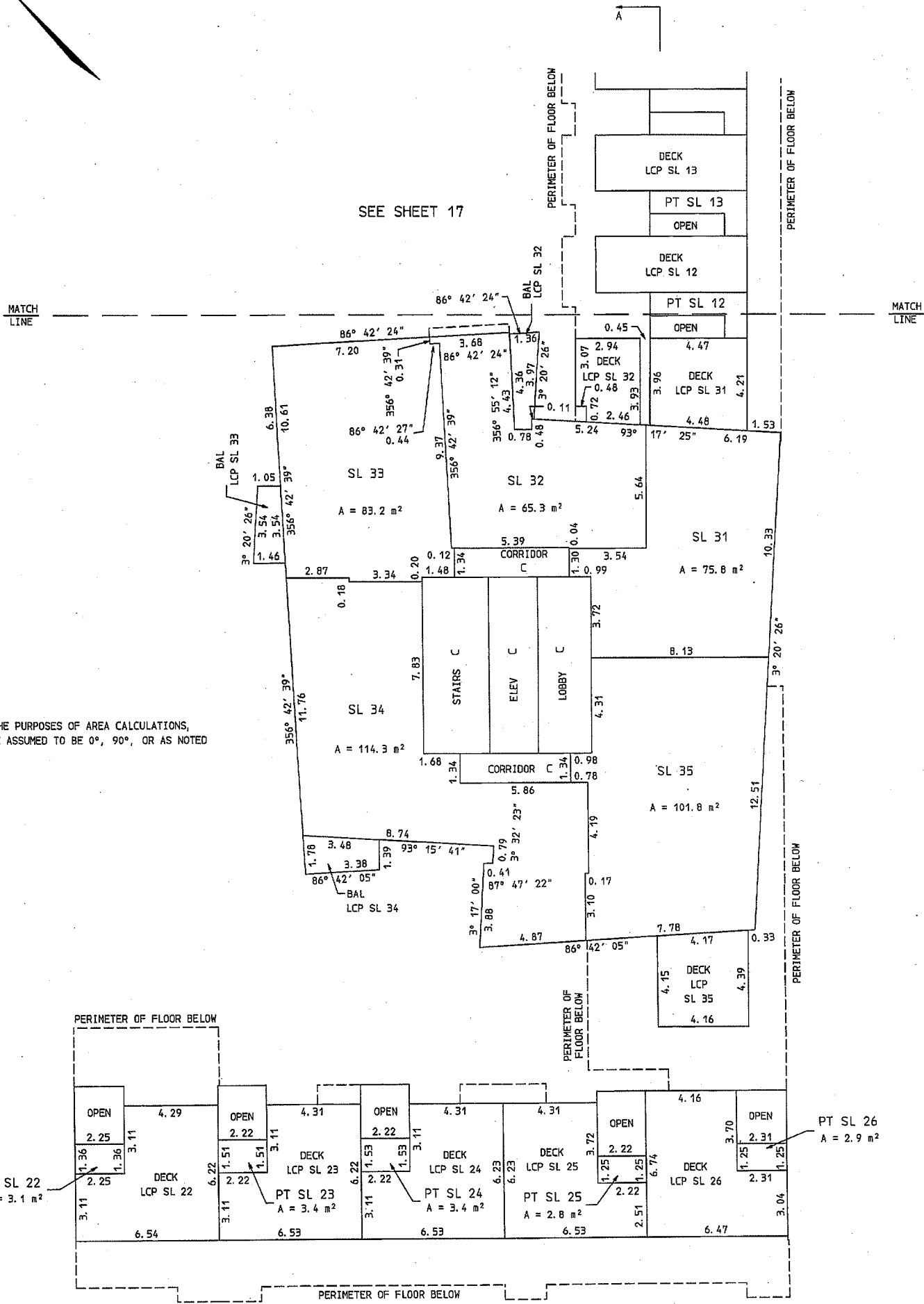
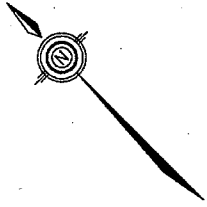


SOUTHERLY PART OF FOURTH FLOOR

SHEET 16 OF 35 SHEETS.

SCALE : 1 : 150
ALL DISTANCES SHOWN ARE IN METRES

STRATA PLAN
BCS 2495



FOR THE PURPOSES OF AREA CALCULATIONS,
WALLS ARE ASSUMED TO BE 0°, 90°, OR AS NOTED

JULY 16th, 2007

V. 2004; 2004-165. S16

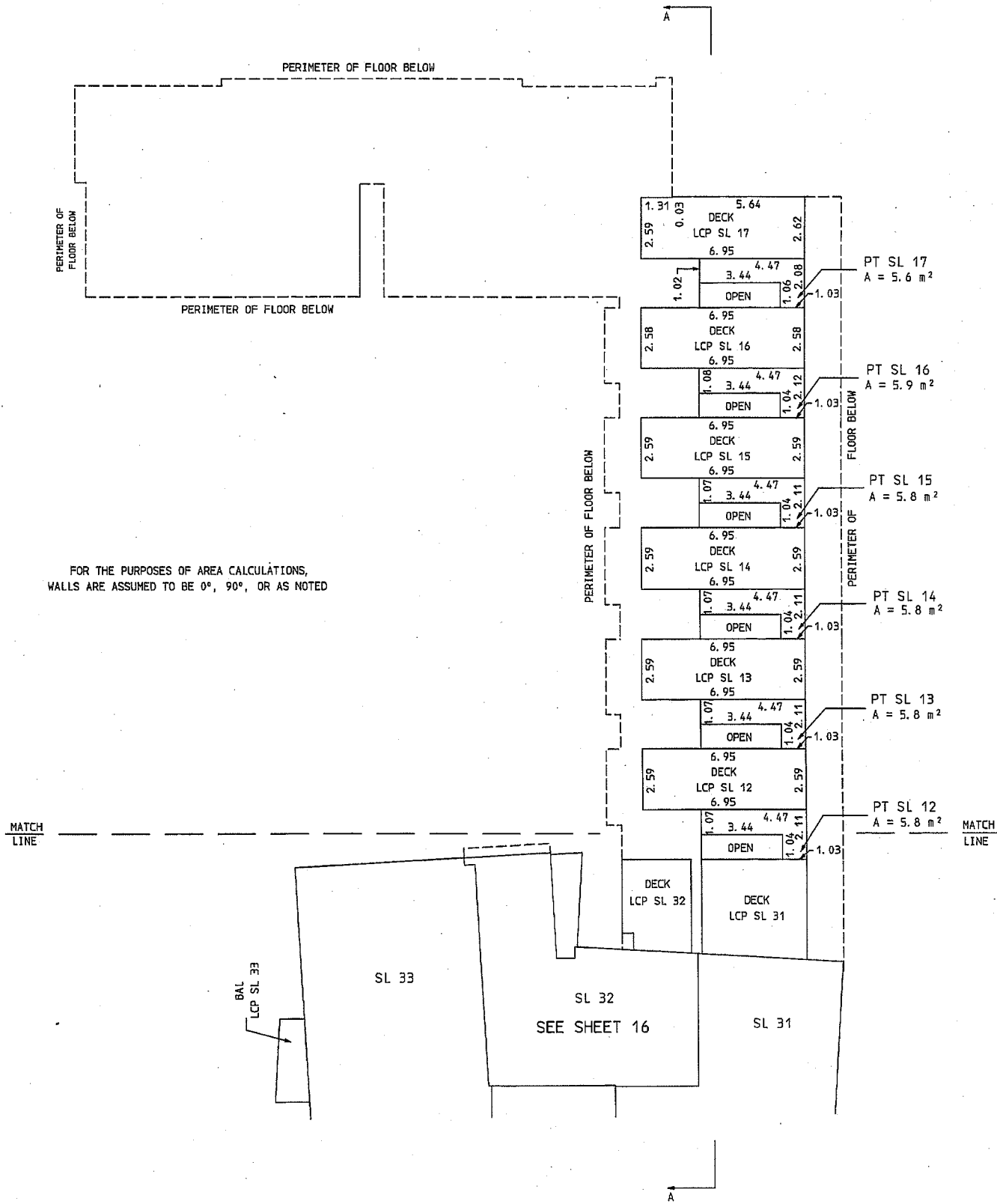
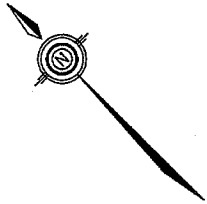
S-10775

NORTHERLY PART OF FOURTH FLOOR

SHEET 17 OF 35 SHEETS.

SCALE : 1 : 150
ALL DISTANCES SHOWN ARE IN METRES

STRATA PLAN
BCS 2495



FOR THE PURPOSES OF AREA CALCULATIONS,
WALLS ARE ASSUMED TO BE 0°, 90°, OR AS NOTED

JULY 16th, 2007

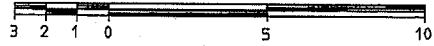
V: 2004; 2004-165, S17

S-10775

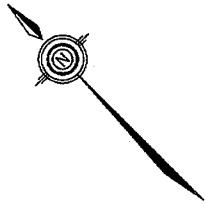
SOUTHERLY PART OF FIFTH FLOOR

SHEET 18 OF 35 SHEETS.

SCALE : 1 : 150
ALL DISTANCES SHOWN ARE IN METRES



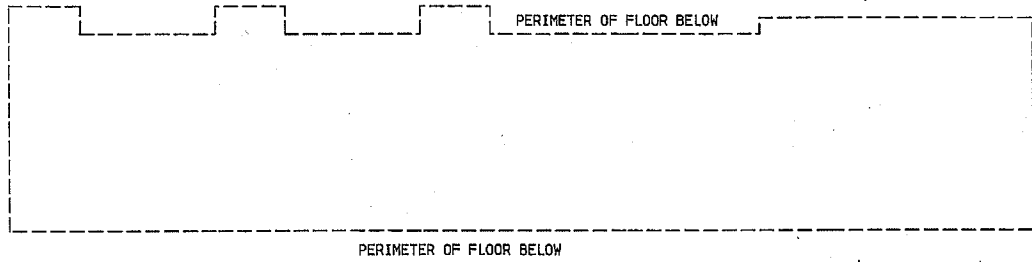
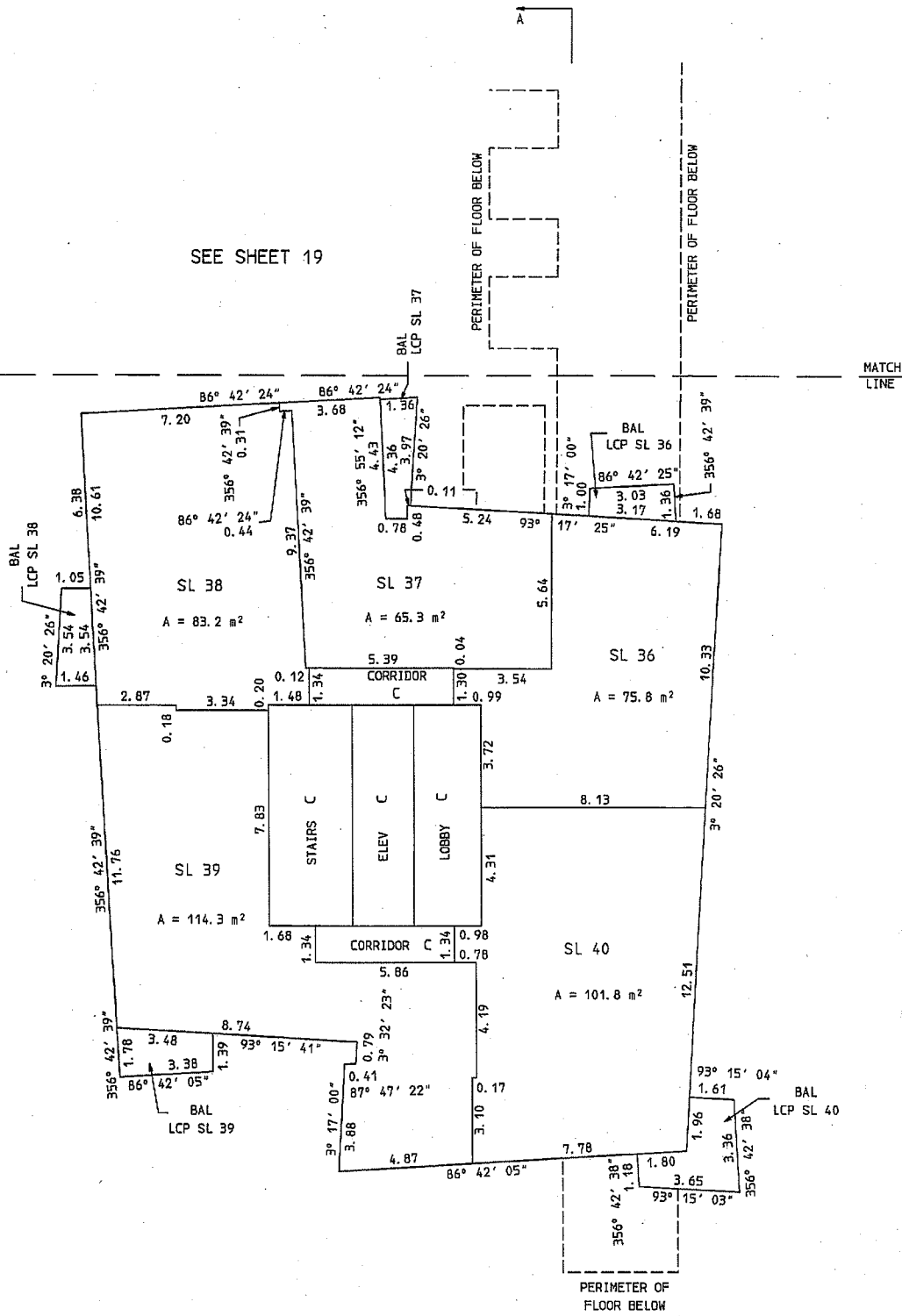
STRATA PLAN
BCS 2495



SEE SHEET 19

MATCH LINE

FOR THE PURPOSES OF AREA CALCULATIONS,
WALLS ARE ASSUMED TO BE 0°, 90°, OR AS NOTED

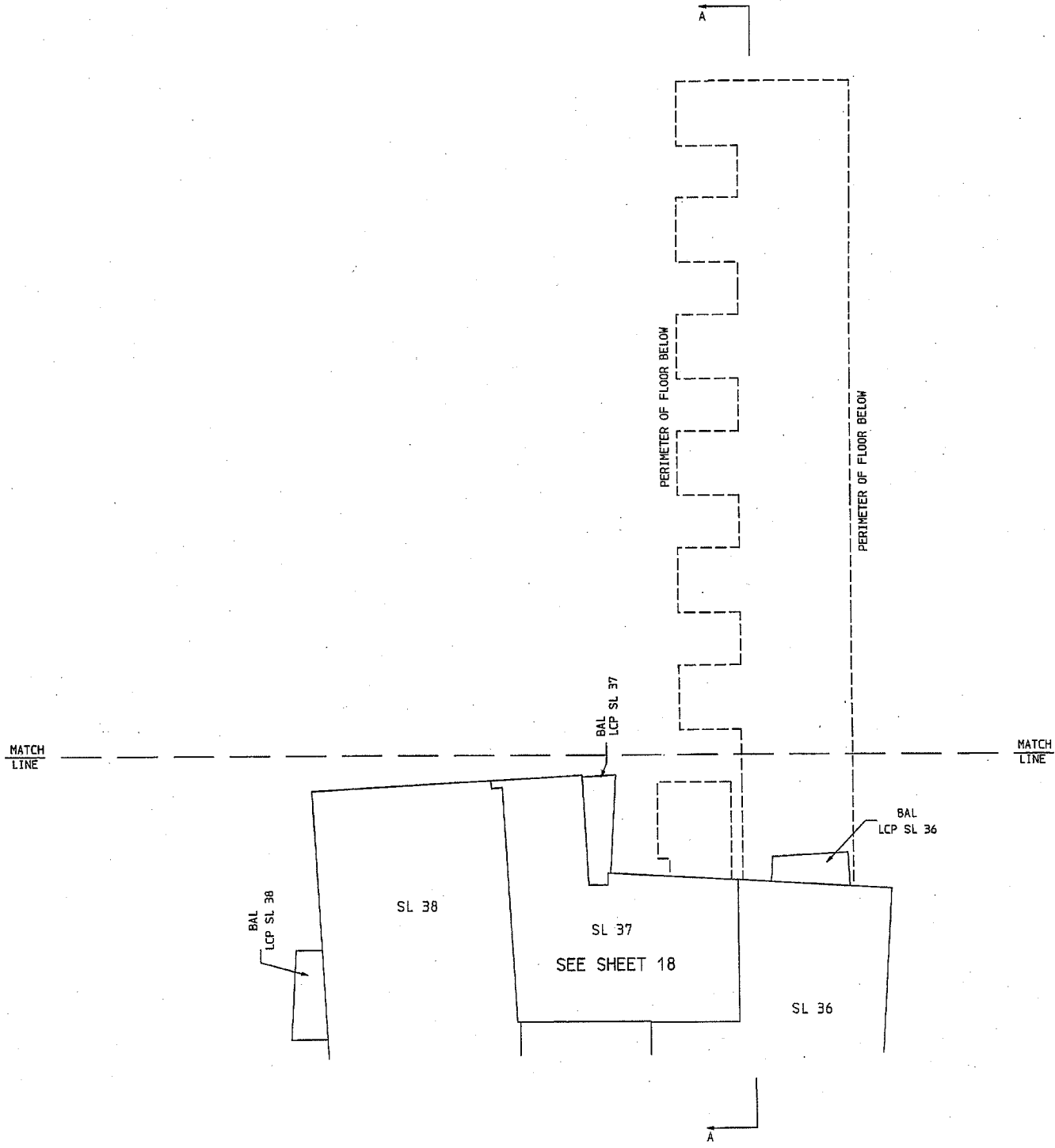
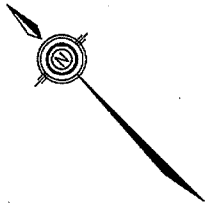


NORTHERLY PART OF FIFTH FLOOR

SHEET 19 OF 35 SHEETS.

SCALE : 1 : 150
ALL DISTANCES SHOWN ARE IN METRES

STRATA PLAN
BCS 2495



JULY 16th, 2007

V: 2004: 2004-165, S19



S-10775

SIXTH FLOOR

SCALE : 1 : 150
ALL DISTANCES SHOWN ARE IN METRES

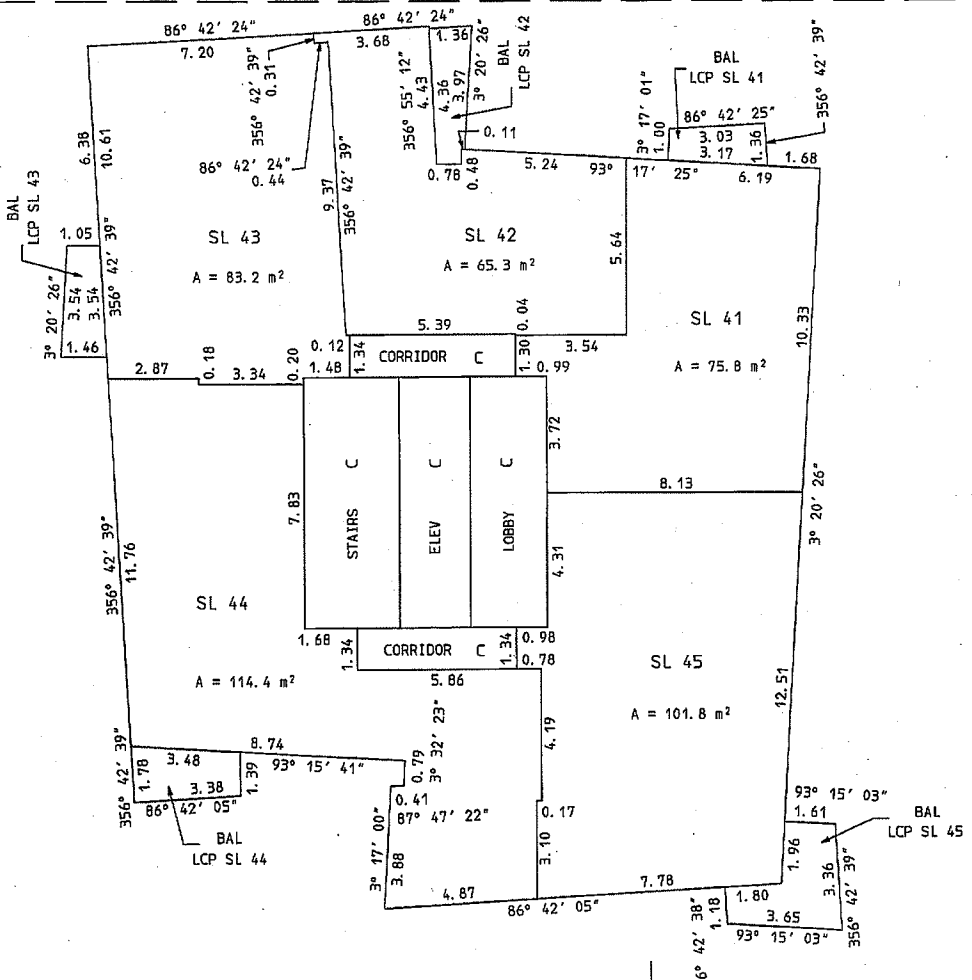
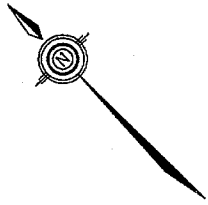


SHEET 20 OF 35 SHEETS.
STRATA PLAN
BCS 2495

MATCH
LINE

MATCH
LINE

FOR THE PURPOSES OF AREA CALCULATIONS,
WALLS ARE ASSUMED TO BE 0°, 90°, OR AS NOTED

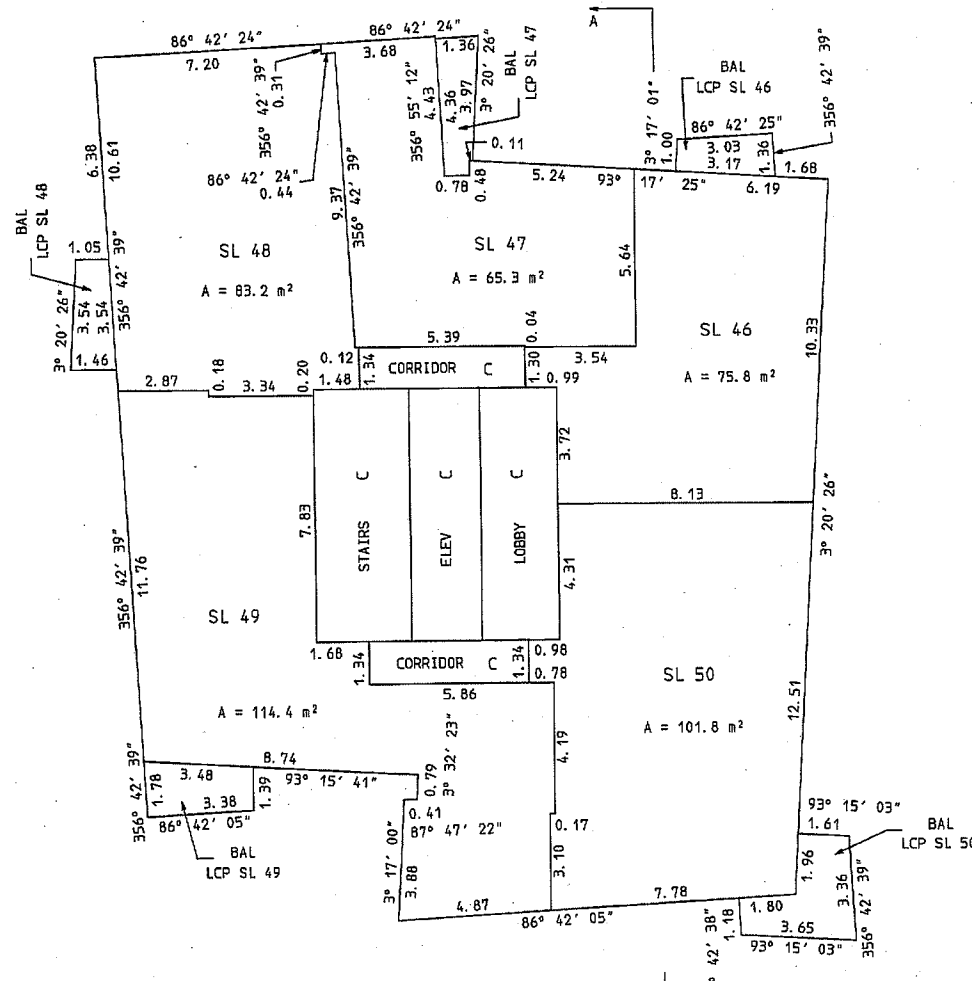
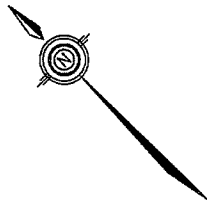


SEVENTH FLOOR

SCALE : 1 : 150
ALL DISTANCES SHOWN ARE IN METRES



FOR THE PURPOSES OF AREA CALCULATIONS,
WALLS ARE ASSUMED TO BE 0°, 90°, OR AS NOTED



JULY 16th, 2007

V: 2004; 2004-165. 520

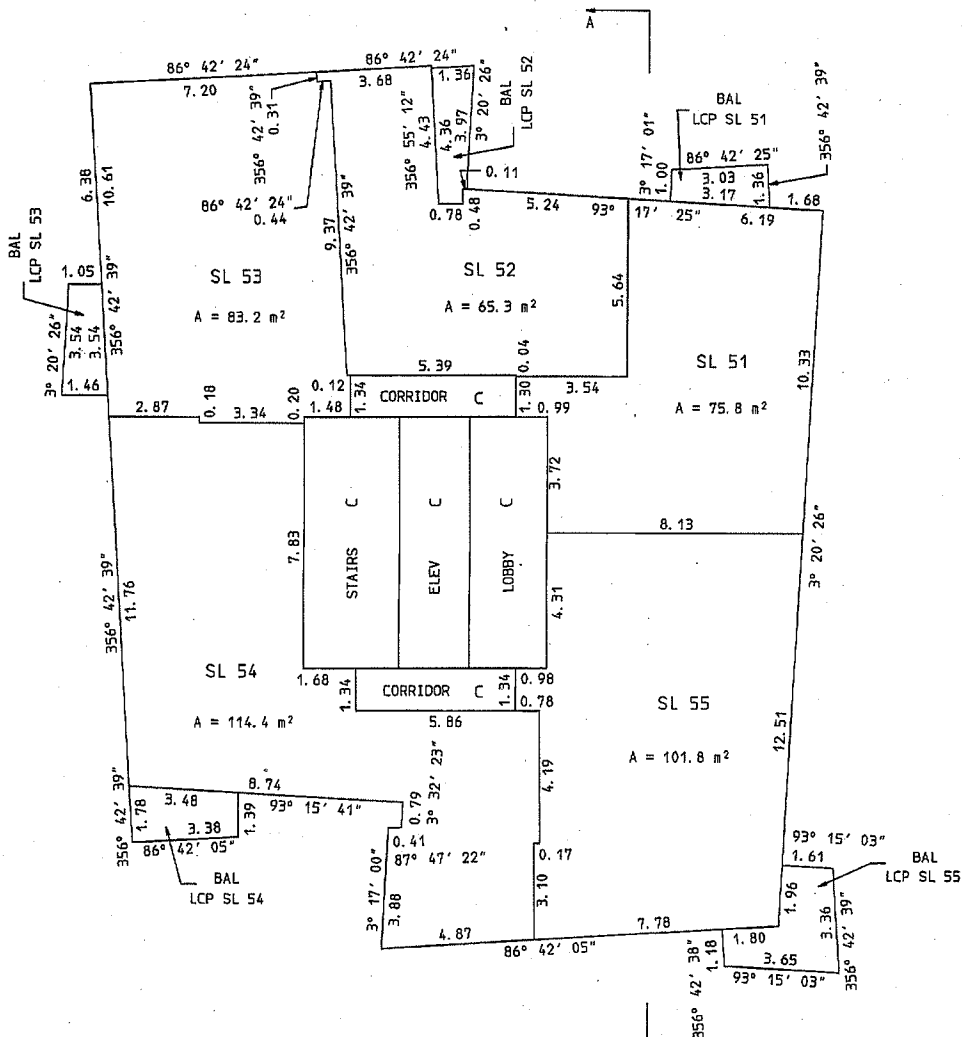
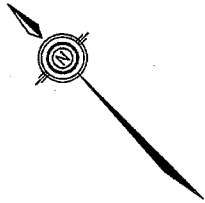
S-10775

EIGHTH FLOOR

SCALE : 1 : 150
ALL DISTANCES SHOWN ARE IN METRES



FOR THE PURPOSES OF AREA CALCULATIONS,
WALLS ARE ASSUMED TO BE 0°, 90°, OR AS NOTED



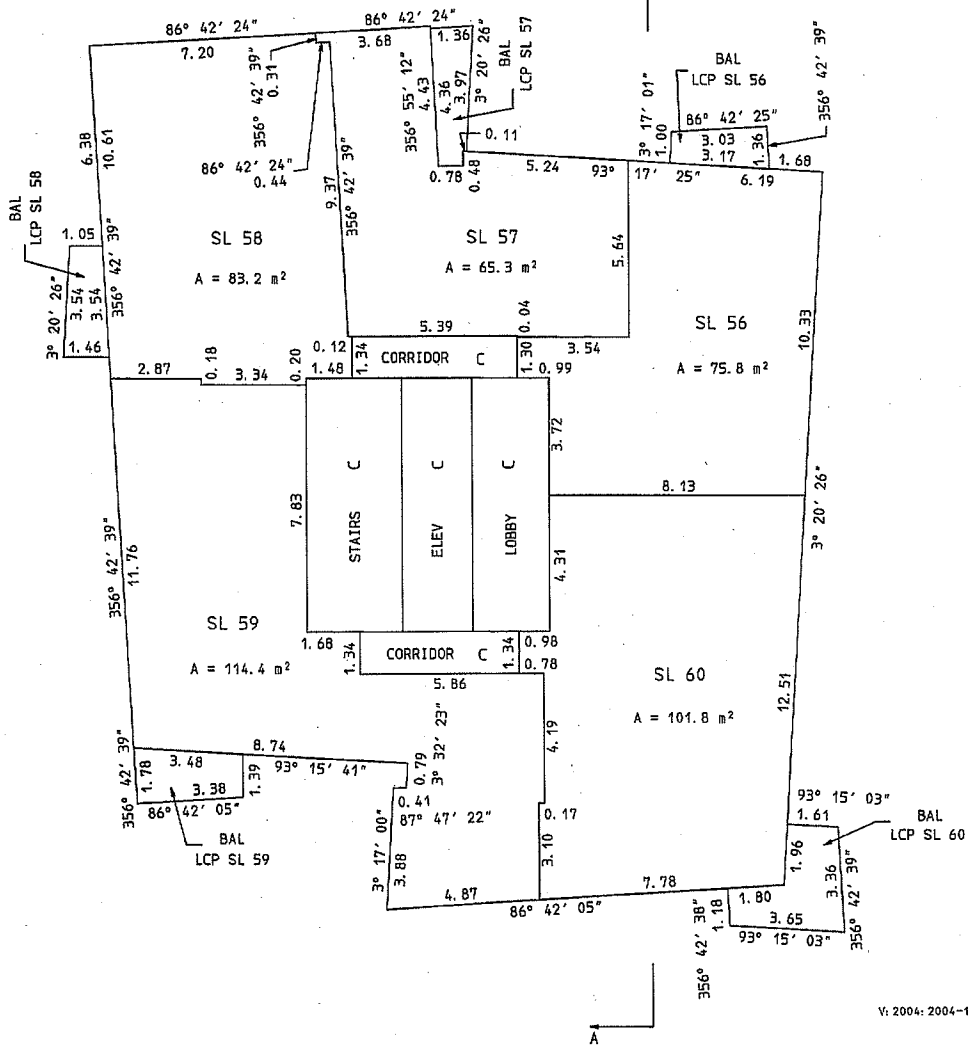
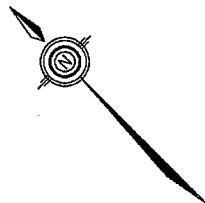
SHEET 21 OF 35 SHEETS.
STRATA PLAN
BCS 2495

NINTH FLOOR

SCALE : 1 : 150
ALL DISTANCES SHOWN ARE IN METRES



FOR THE PURPOSES OF AREA CALCULATIONS,
WALLS ARE ASSUMED TO BE 0°, 90°, OR AS NOTED



JULY 16th, 2007

V: 2004: 2004-165. S21

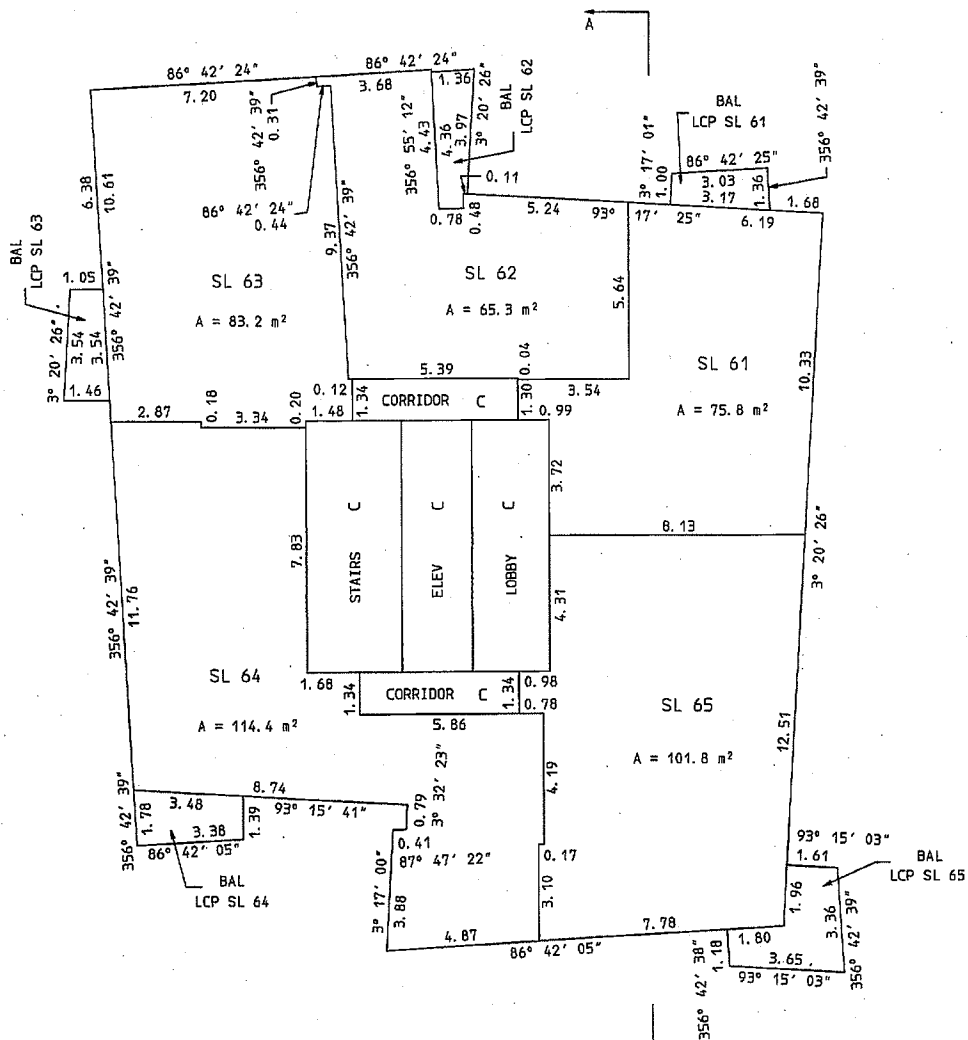
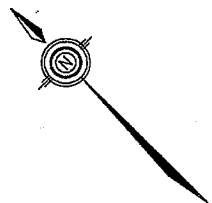
S-10775

TENTH FLOOR

SCALE : 1 : 150
ALL DISTANCES SHOWN ARE IN METRES



FOR THE PURPOSES OF AREA CALCULATIONS,
WALLS ARE ASSUMED TO BE 0°, 90°, OR AS NOTED

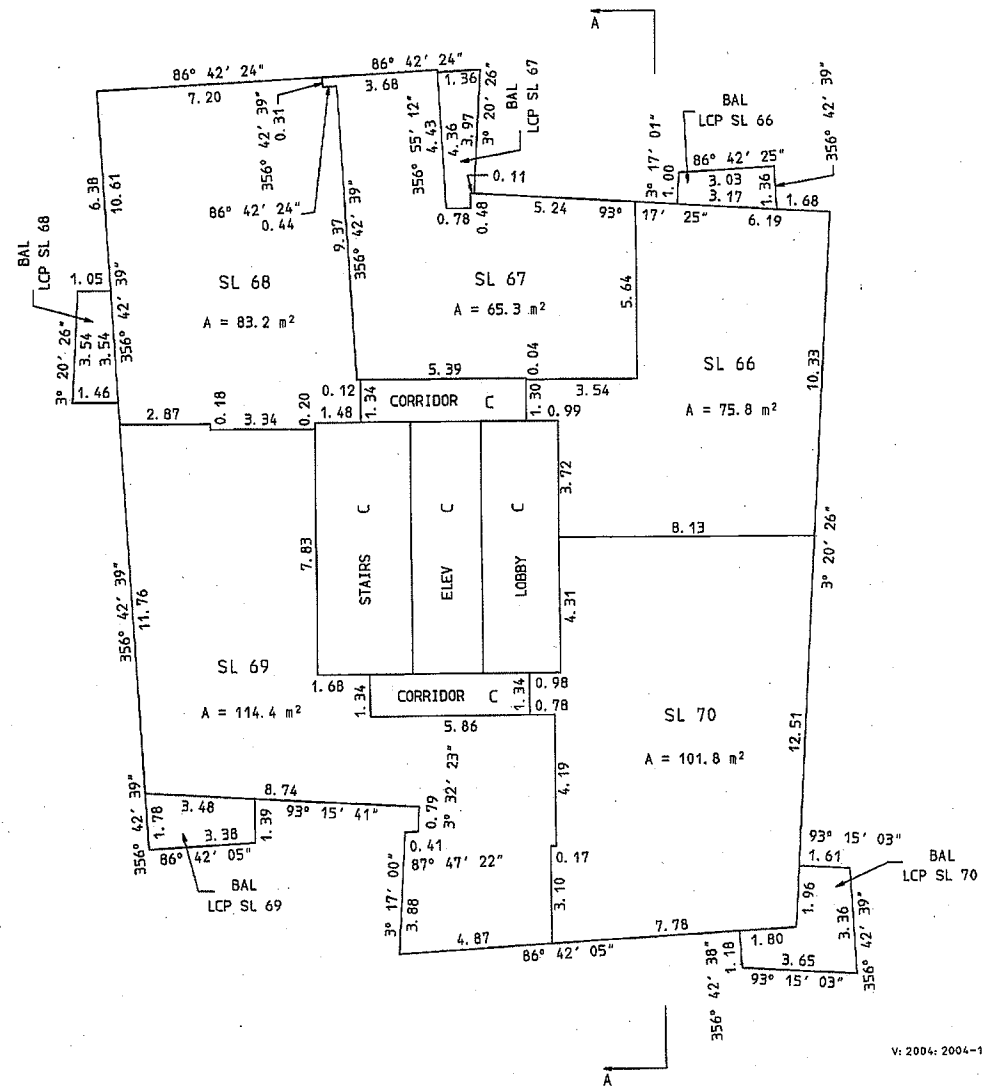
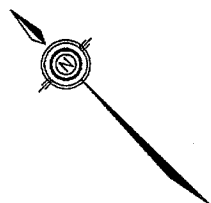


ELEVENTH FLOOR

SCALE : 1 : 150
ALL DISTANCES SHOWN ARE IN METRES



FOR THE PURPOSES OF AREA CALCULATIONS,
WALLS ARE ASSUMED TO BE 0°, 90°, OR AS NOTED



JULY 16th, 2007

V: 2004: 2004-165, 522

S-10775

TWELFTH FLOOR

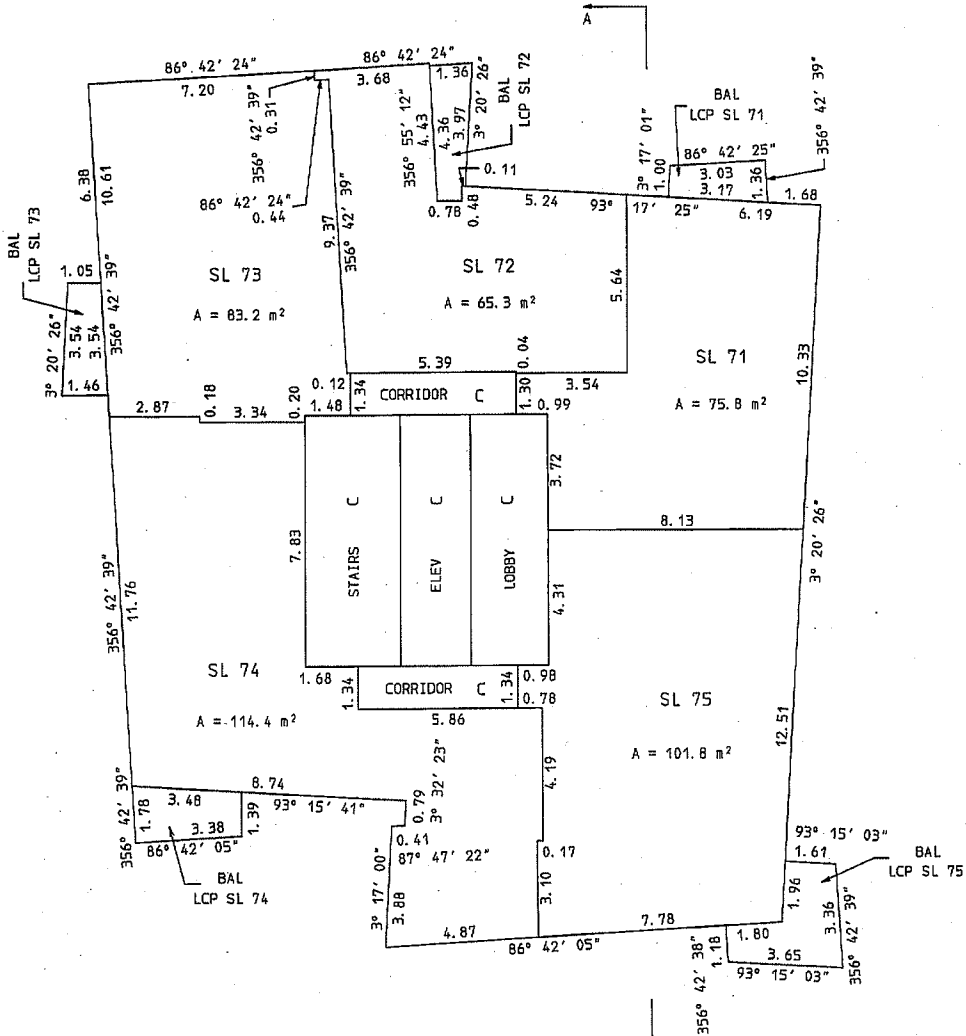
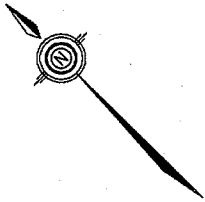
SCALE : 1 : 150
ALL DISTANCES SHOWN ARE IN METRES



SHEET 23 OF 35 SHEETS.

STRATA PLAN
BCS 2495

FOR THE PURPOSES OF AREA CALCULATIONS,
WALLS ARE ASSUMED TO BE 0°, 90°, OR AS NOTED

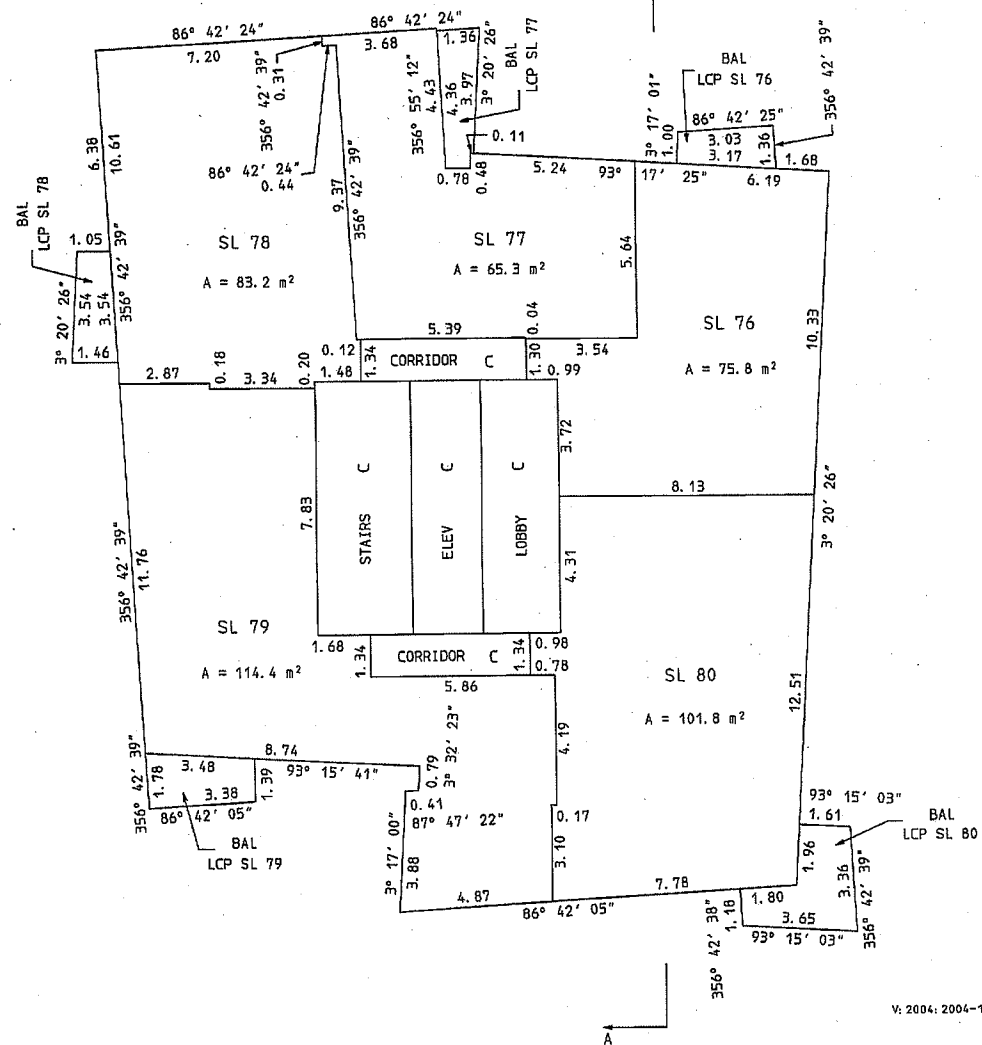
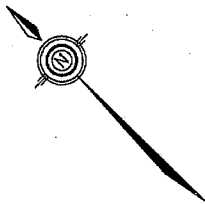


THIRTEENTH FLOOR

SCALE : 1 : 150
ALL DISTANCES SHOWN ARE IN METRES



FOR THE PURPOSES OF AREA CALCULATIONS,
WALLS ARE ASSUMED TO BE 0°, 90°, OR AS NOTED



JULY 16th, 2007

V. 2004: 2004-165. S23

S-10775

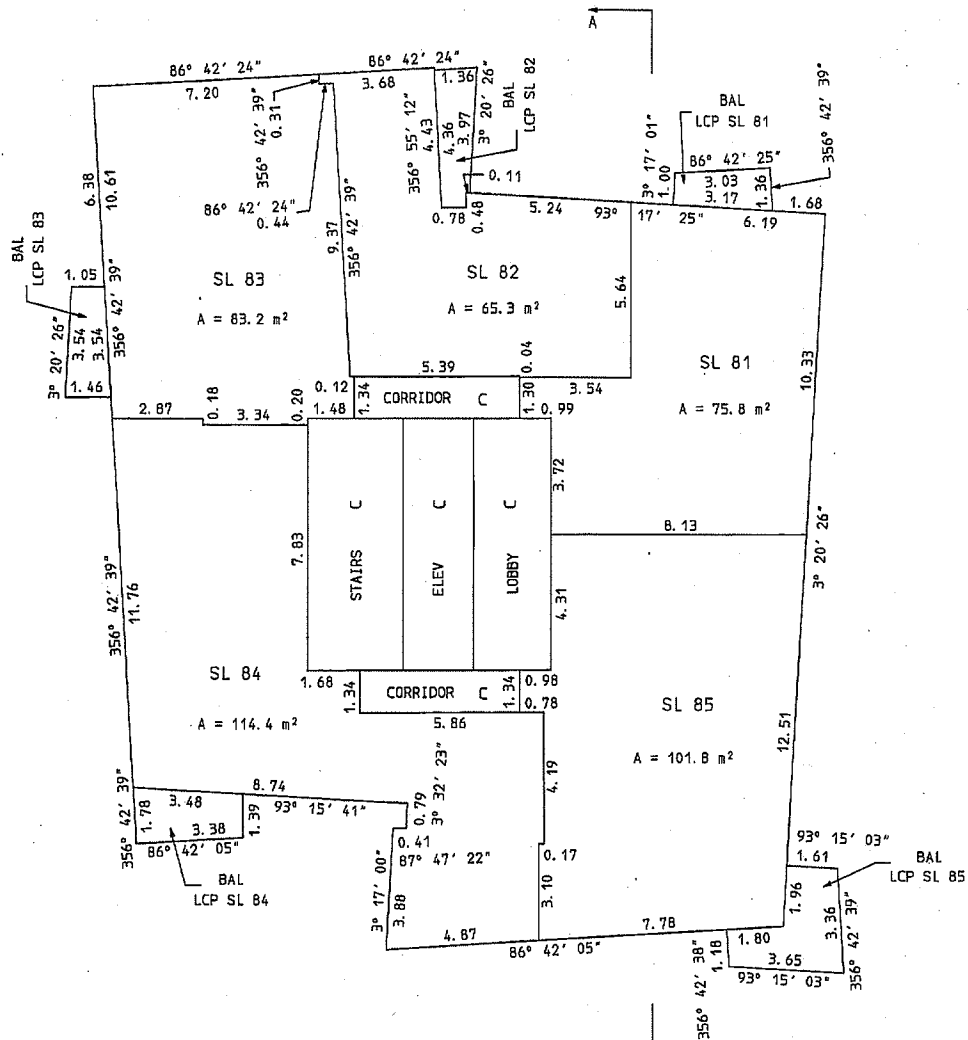
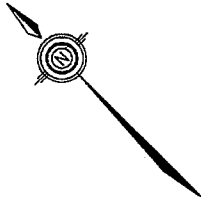
FOURTEENTH FLOOR

SCALE : 1 : 150
ALL DISTANCES SHOWN ARE IN METRES



SHEET 24 OF 35 SHEETS.
STRATA PLAN
BCS 2495

FOR THE PURPOSES OF AREA CALCULATIONS,
WALLS ARE ASSUMED TO BE 0°, 90°, OR AS NOTED

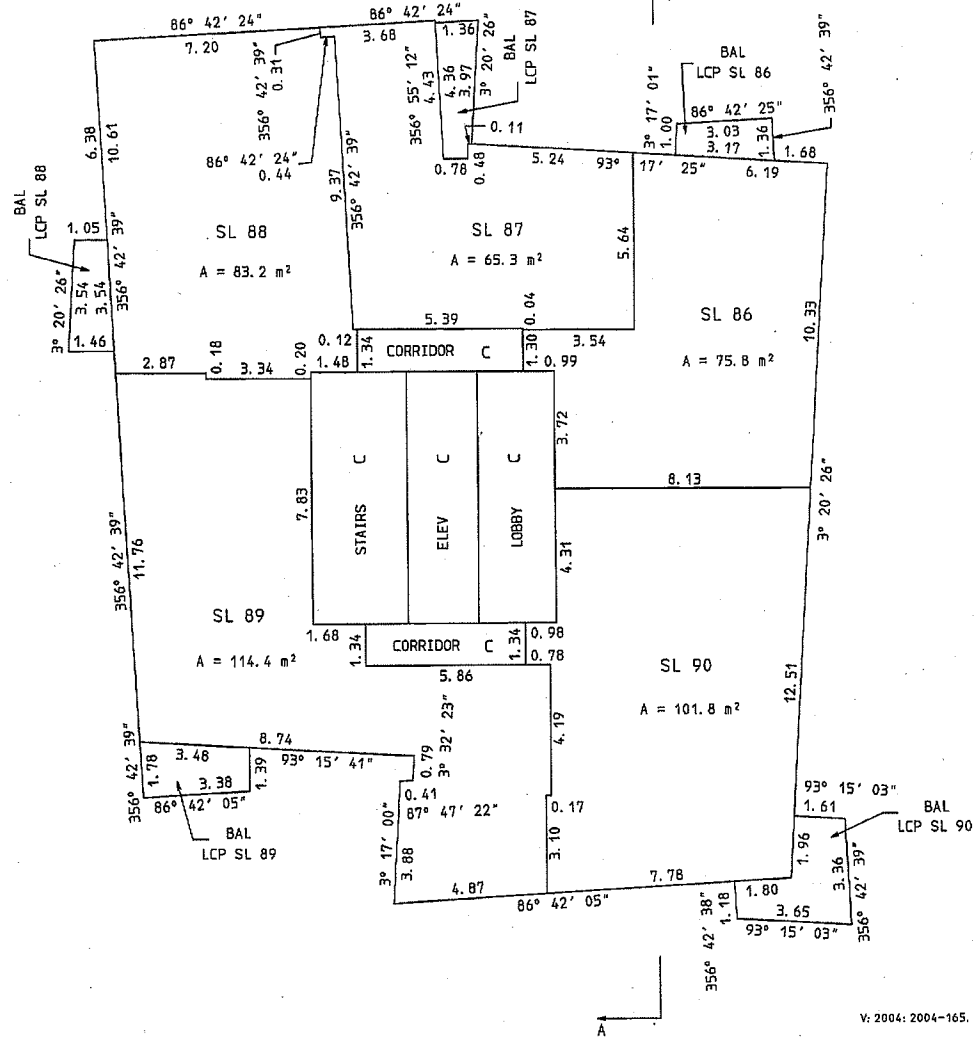
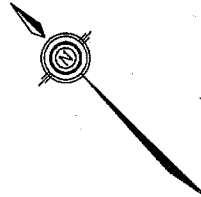


FIFTEENTH FLOOR

SCALE : 1 : 150
ALL DISTANCES SHOWN ARE IN METRES



FOR THE PURPOSES OF AREA CALCULATIONS,
WALLS ARE ASSUMED TO BE 0°, 90°, OR AS NOTED



FILED: 2007-07-16 PM 2:00:00

SIXTEENTH FLOOR

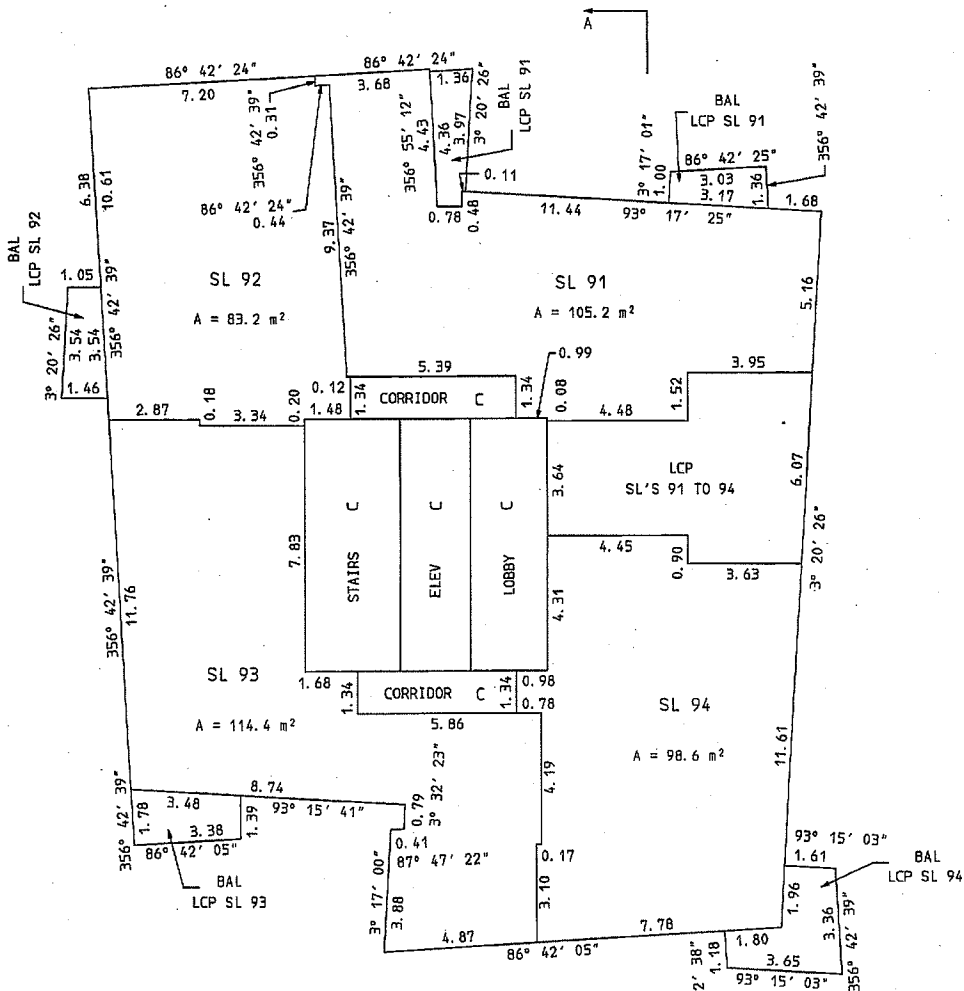
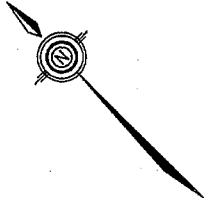
SCALE : 1 : 150
ALL DISTANCES SHOWN ARE IN METRES



SHEET 25 OF 35 SHEETS.

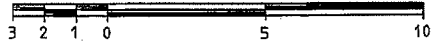
STRATA PLAN
BCS 2495

FOR THE PURPOSES OF AREA CALCULATIONS,
WALLS ARE ASSUMED TO BE 0°, 90°, OR AS NOTED

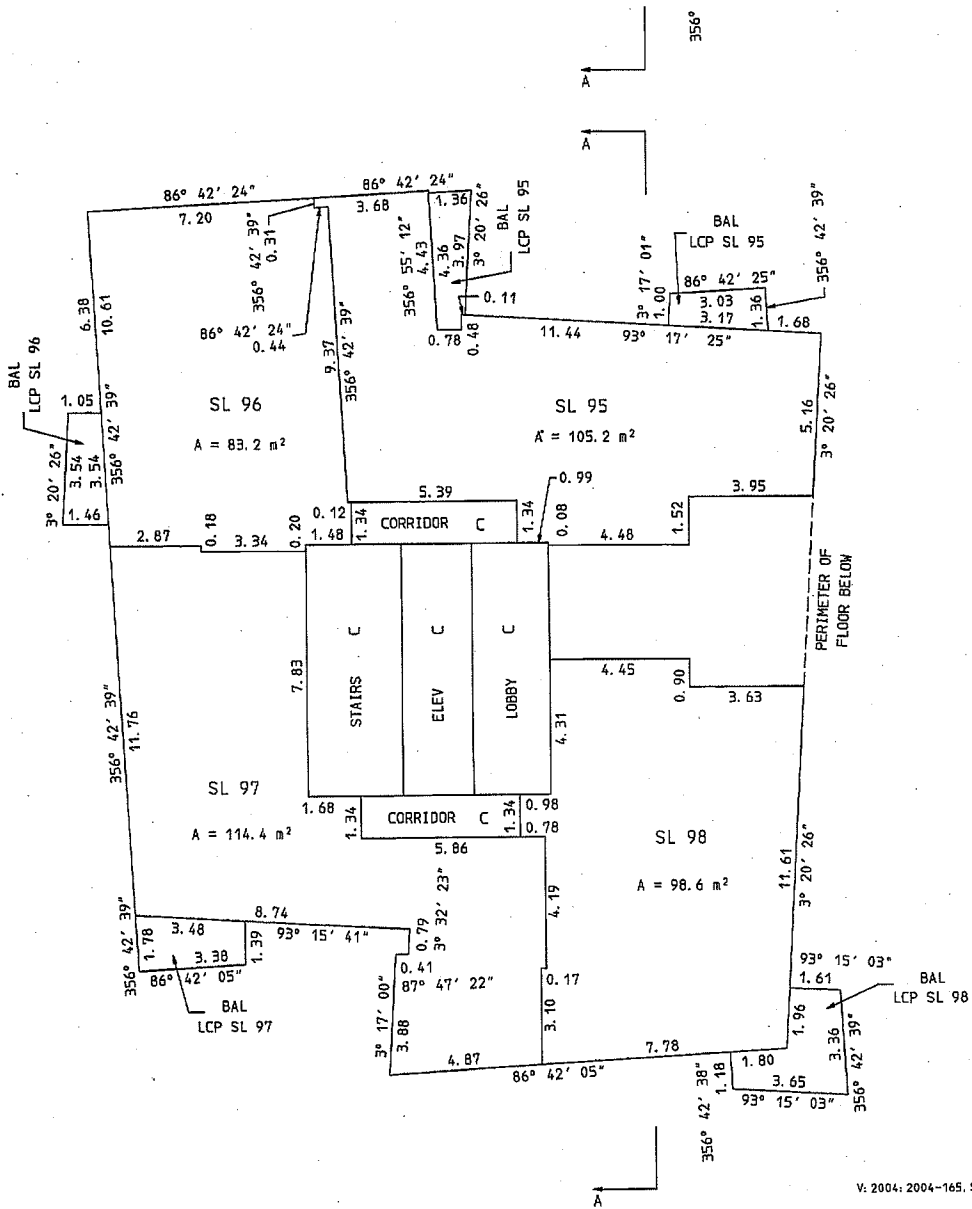
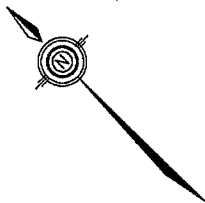


SEVENTEENTH FLOOR

SCALE : 1 : 150
ALL DISTANCES SHOWN ARE IN METRES



FOR THE PURPOSES OF AREA CALCULATIONS,
WALLS ARE ASSUMED TO BE 0°, 90°, OR AS NOTED



JULY 16th, 2007

V: 2004: 2004-165, 525

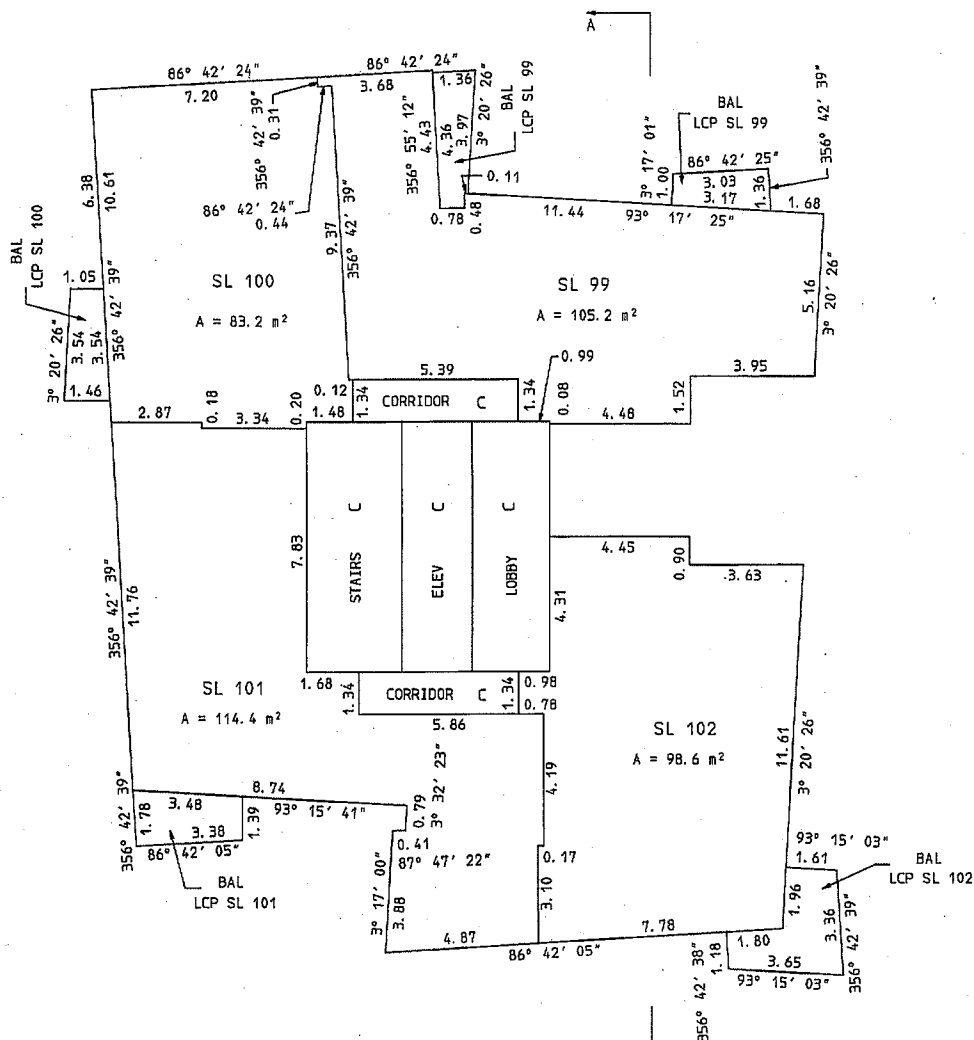
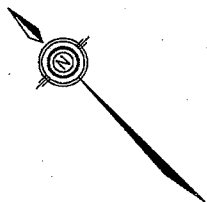
S-10775

EIGHTEENTH FLOOR

SCALE : 1 : 150
ALL DISTANCES SHOWN ARE IN METRES

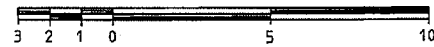


FOR THE PURPOSES OF AREA CALCULATIONS,
WALLS ARE ASSUMED TO BE 0°, 90°, OR AS NOTED

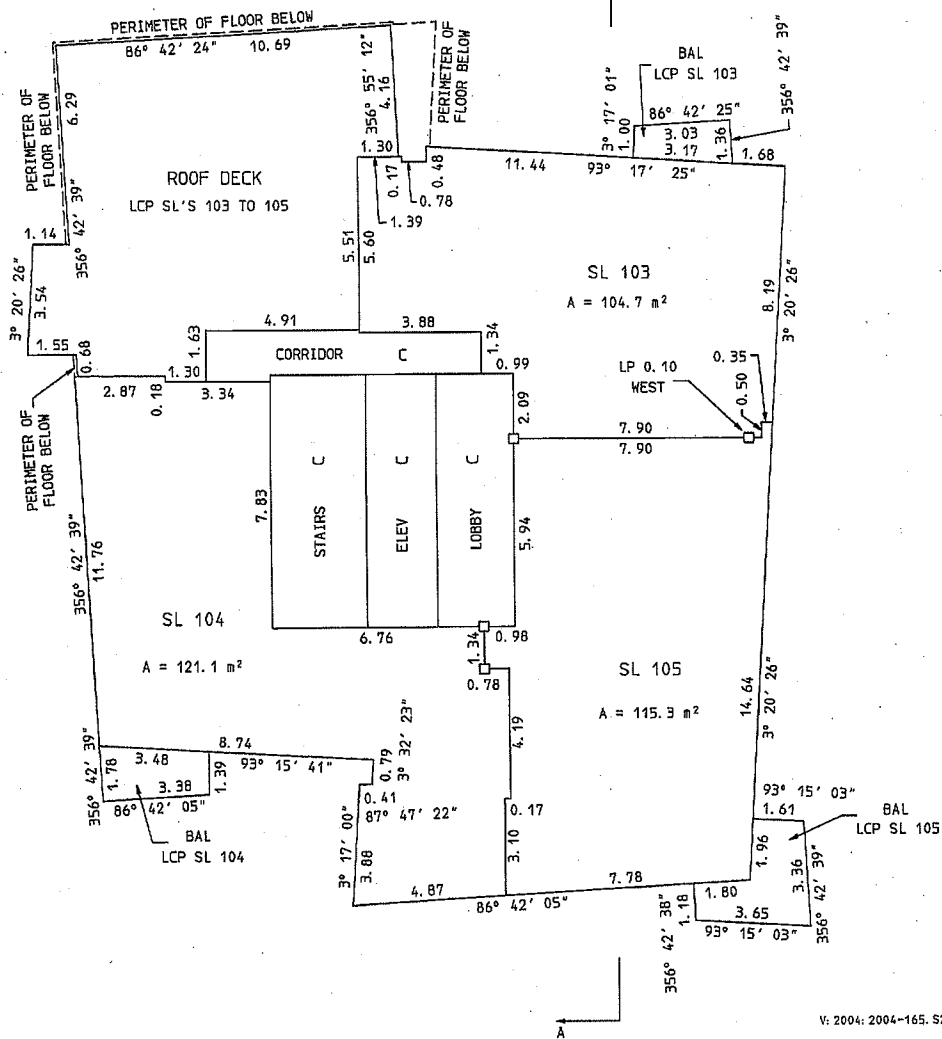
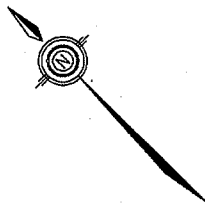


NINETEENTH FLOOR

SCALE : 1 : 150
ALL DISTANCES SHOWN ARE IN METRES



FOR THE PURPOSES OF AREA CALCULATIONS,
WALLS ARE ASSUMED TO BE 0°, 90°, OR AS NOTED



JULY 16th, 2007

V: 2004: 2004-165. S26

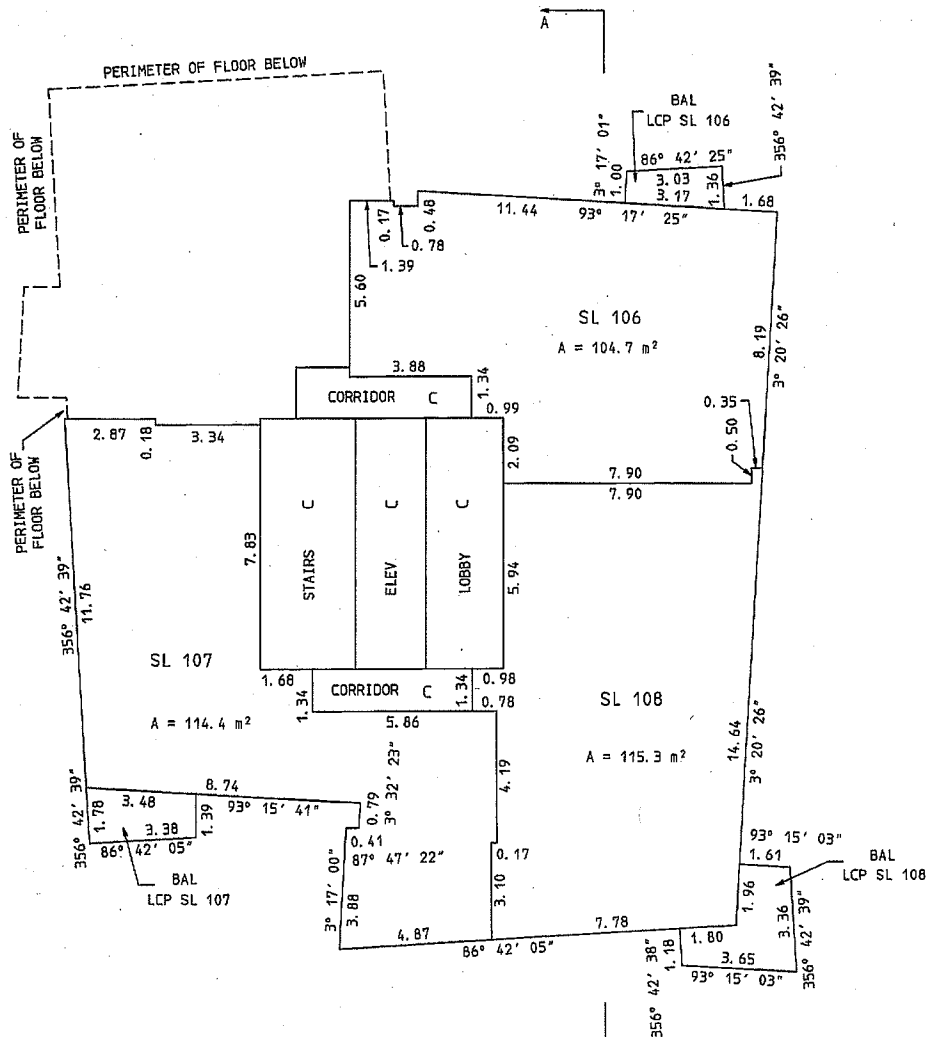
S-10775

TWENTIETH FLOOR

SCALE : 1 : 150
ALL DISTANCES SHOWN ARE IN METRES



FOR THE PURPOSES OF AREA CALCULATIONS,
WALLS ARE ASSUMED TO BE 0°, 90°, OR AS NOTED

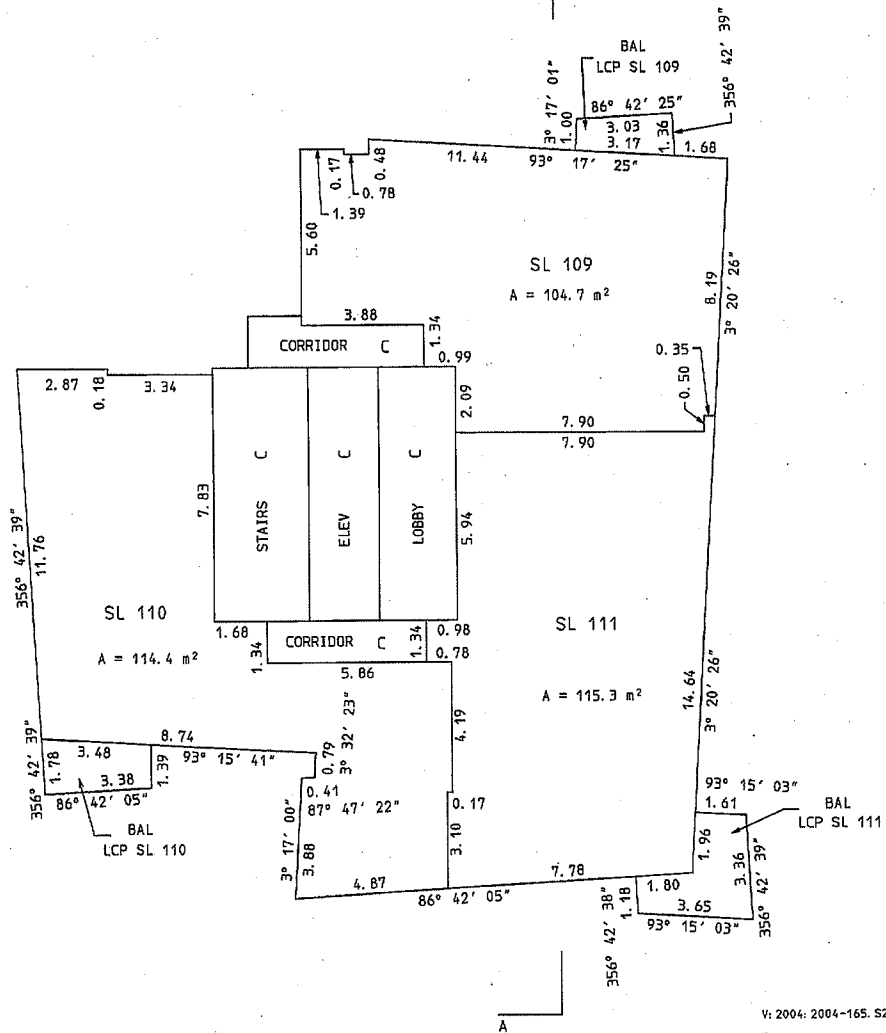
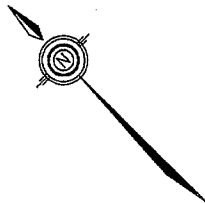


TWENTYFIRST FLOOR

SCALE : 1 : 150
ALL DISTANCES SHOWN ARE IN METRES



FOR THE PURPOSES OF AREA CALCULATIONS,
WALLS ARE ASSUMED TO BE 0°, 90°, OR AS NOTED



JULY 16th, 2007

V: 2004: 2004-165. 527

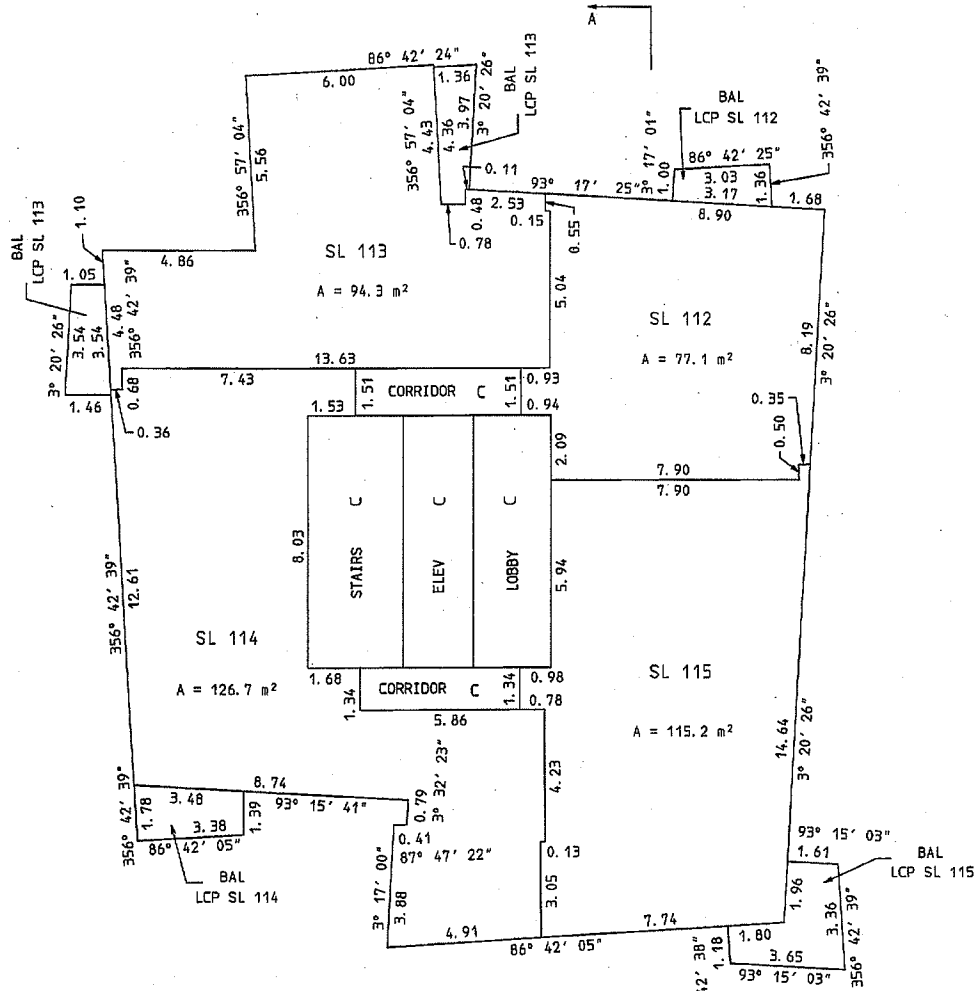
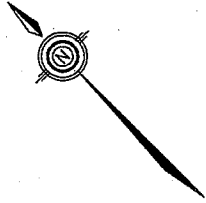
S-10775

TWENTYSECOND FLOOR

SCALE : 1 : 150
ALL DISTANCES SHOWN ARE IN METRES



FOR THE PURPOSES OF AREA CALCULATIONS,
WALLS ARE ASSUMED TO BE 0°, 90°, OR AS NOTED



SHEET 28 OF 35 SHEETS.

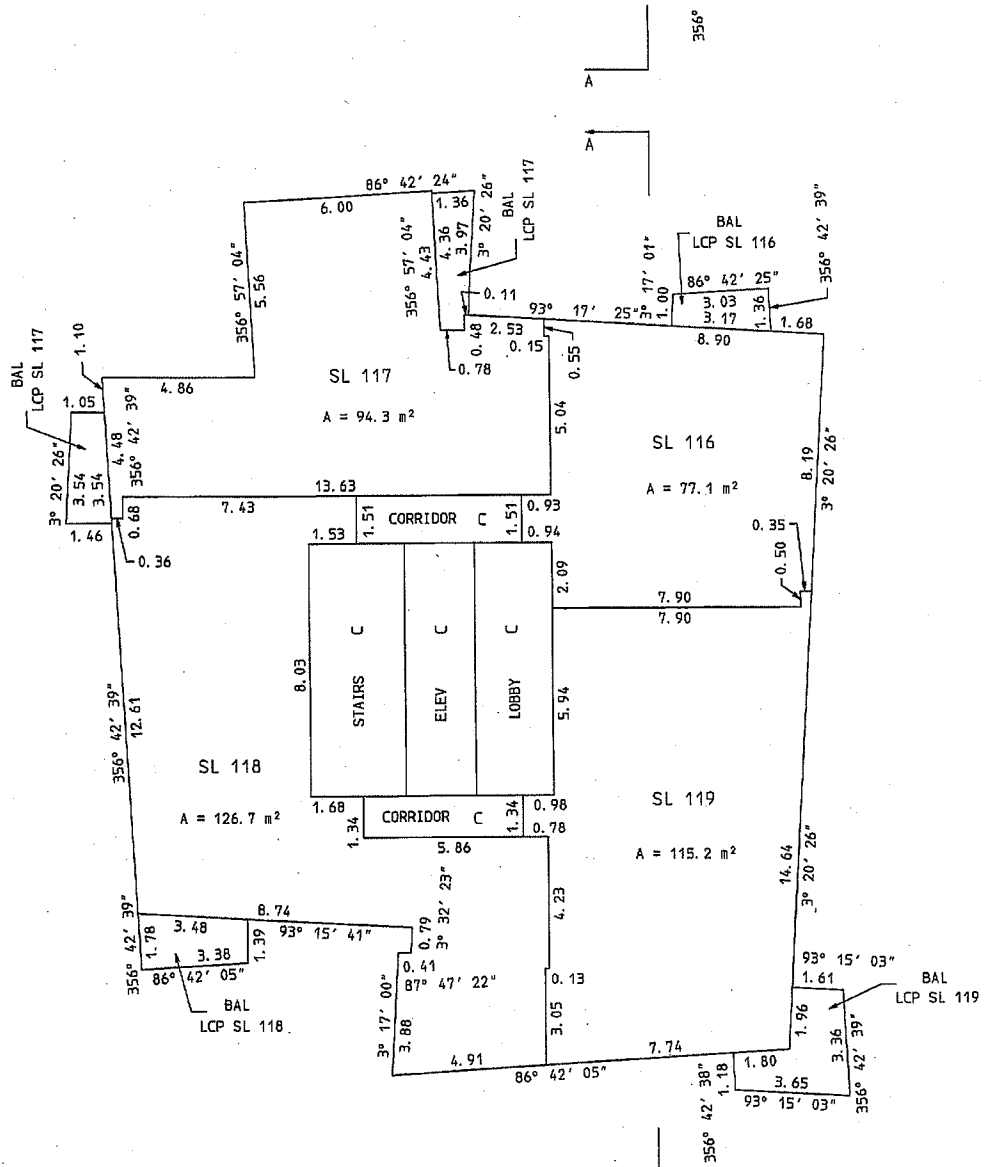
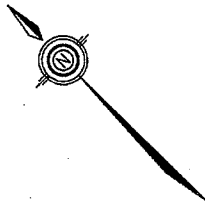
STRATA PLAN
BCS 2495

TWENTYTHIRD FLOOR

SCALE : 1 : 150
ALL DISTANCES SHOWN ARE IN METRES



FOR THE PURPOSES OF AREA CALCULATIONS,
WALLS ARE ASSUMED TO BE 0°, 90°, OR AS NOTED



JULY 16th, 2007

V: 2004: 2004-165. S28

S-10775

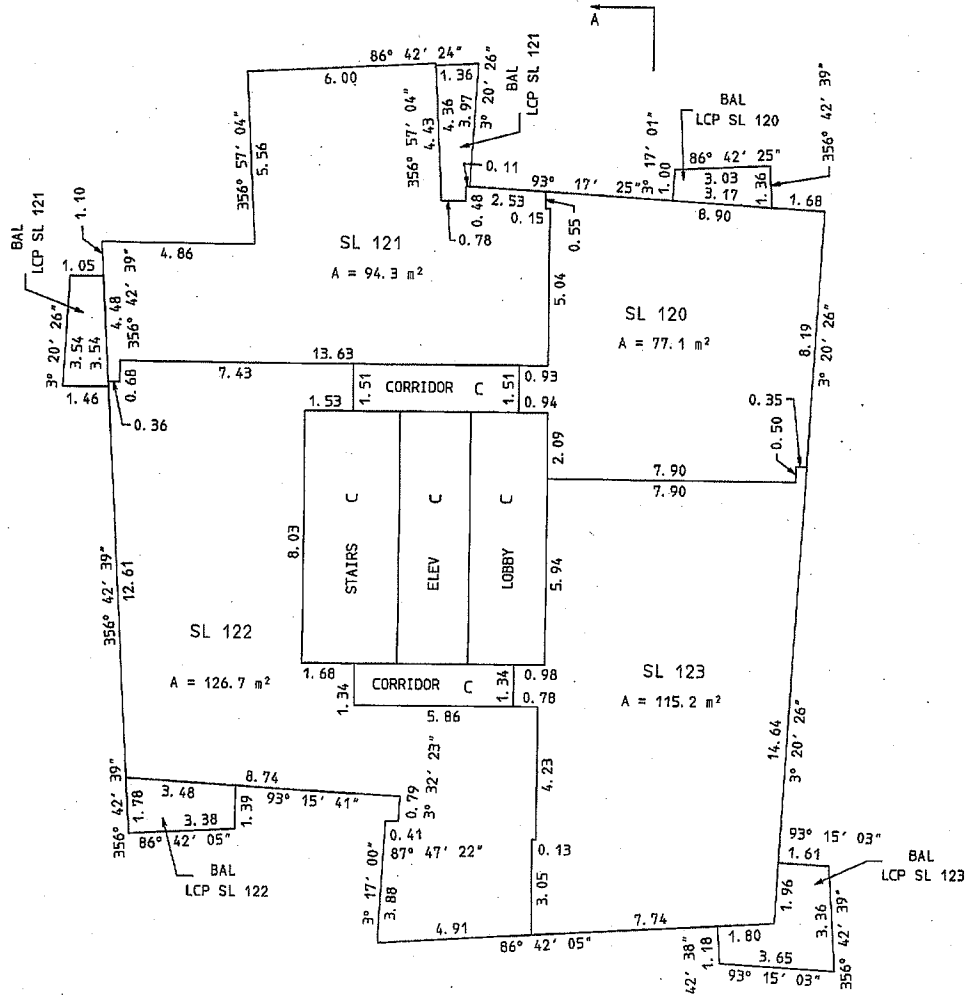
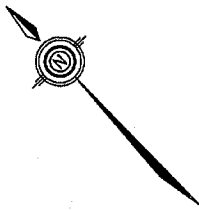
TWENTYFOURTH FLOOR

SCALE : 1 : 150
ALL DISTANCES SHOWN ARE IN METRES



SHEET 29 OF 35 SHEETS.
STRATA PLAN
BCS 2495

FOR THE PURPOSES OF AREA CALCULATIONS,
WALLS ARE ASSUMED TO BE 0°, 90°, OR AS NOTED

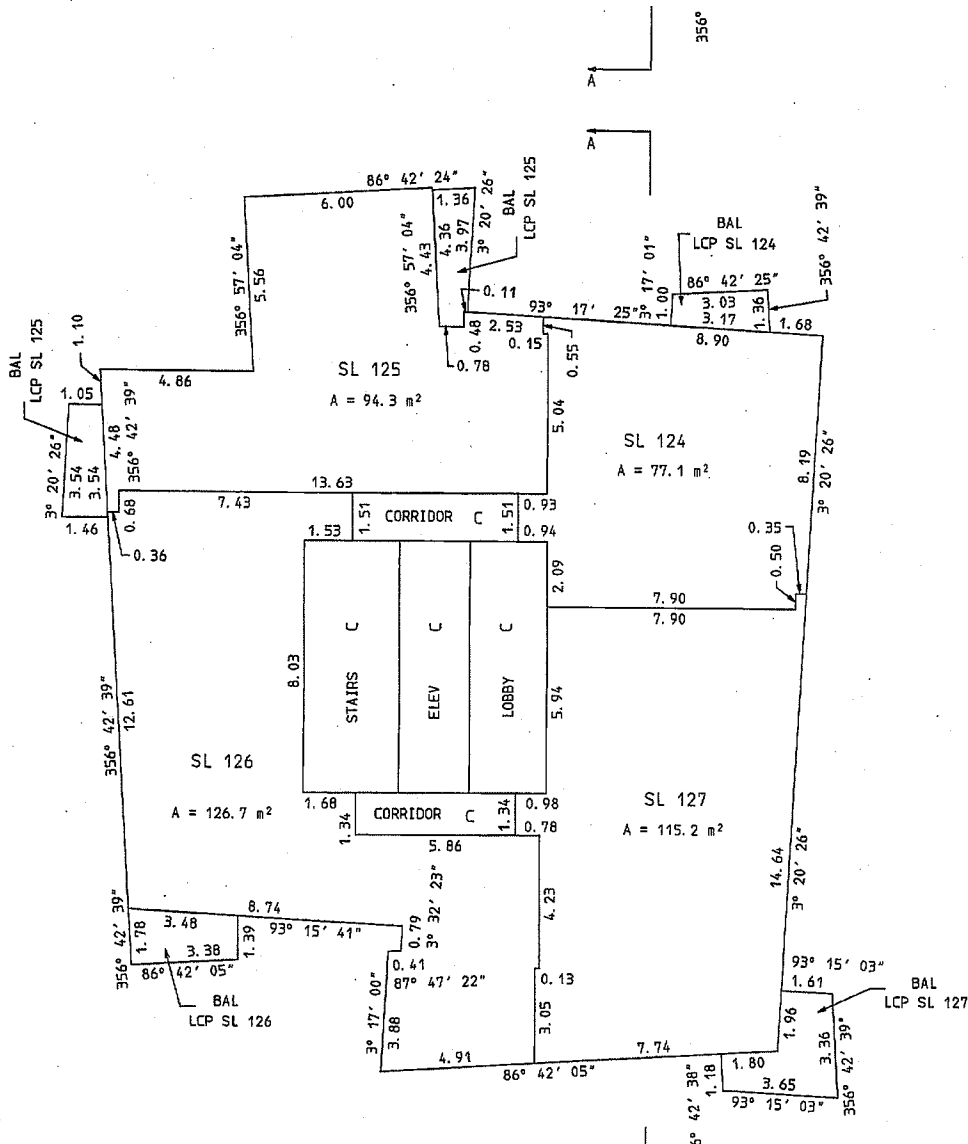
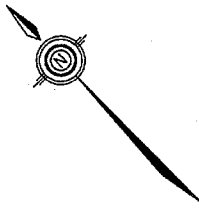


TWENTYFIFTH FLOOR

SCALE : 1 : 150
ALL DISTANCES SHOWN ARE IN METRES



FOR THE PURPOSES OF AREA CALCULATIONS,
WALLS ARE ASSUMED TO BE 0°, 90°, OR AS NOTED



TWENTYSIXTH FLOOR

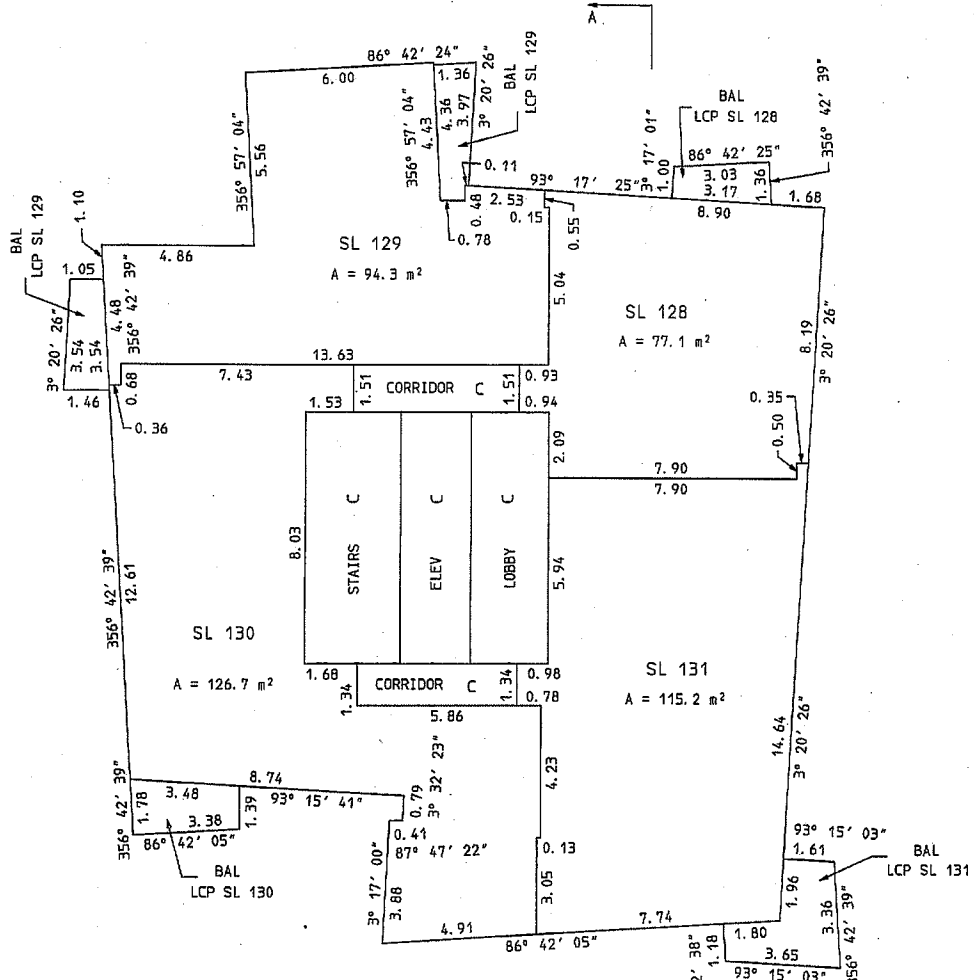
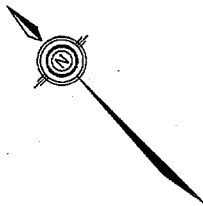
SCALE : 1 : 150
ALL DISTANCES SHOWN ARE IN METRES



SHEET 30 OF 35 SHEETS.

STRATA PLAN
BCS 2495

FOR THE PURPOSES OF AREA CALCULATIONS,
WALLS ARE ASSUMED TO BE 0°, 90°, OR AS NOTED

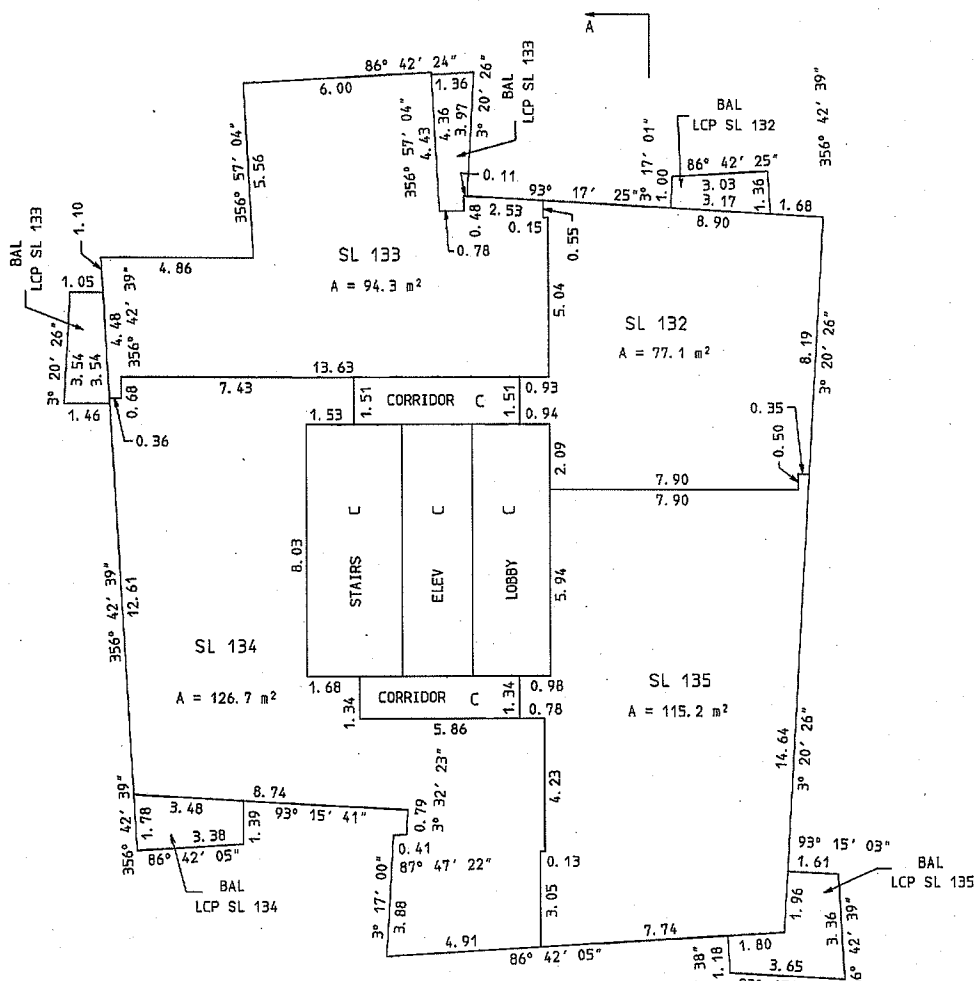
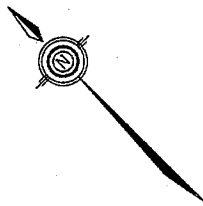


TWENTYSEVENTH FLOOR

SCALE : 1 : 150
ALL DISTANCES SHOWN ARE IN METRES



FOR THE PURPOSES OF AREA CALCULATIONS,
WALLS ARE ASSUMED TO BE 0°, 90°, OR AS NOTED



JULY 16th, 2007

V. 2004: 2004-165. 530

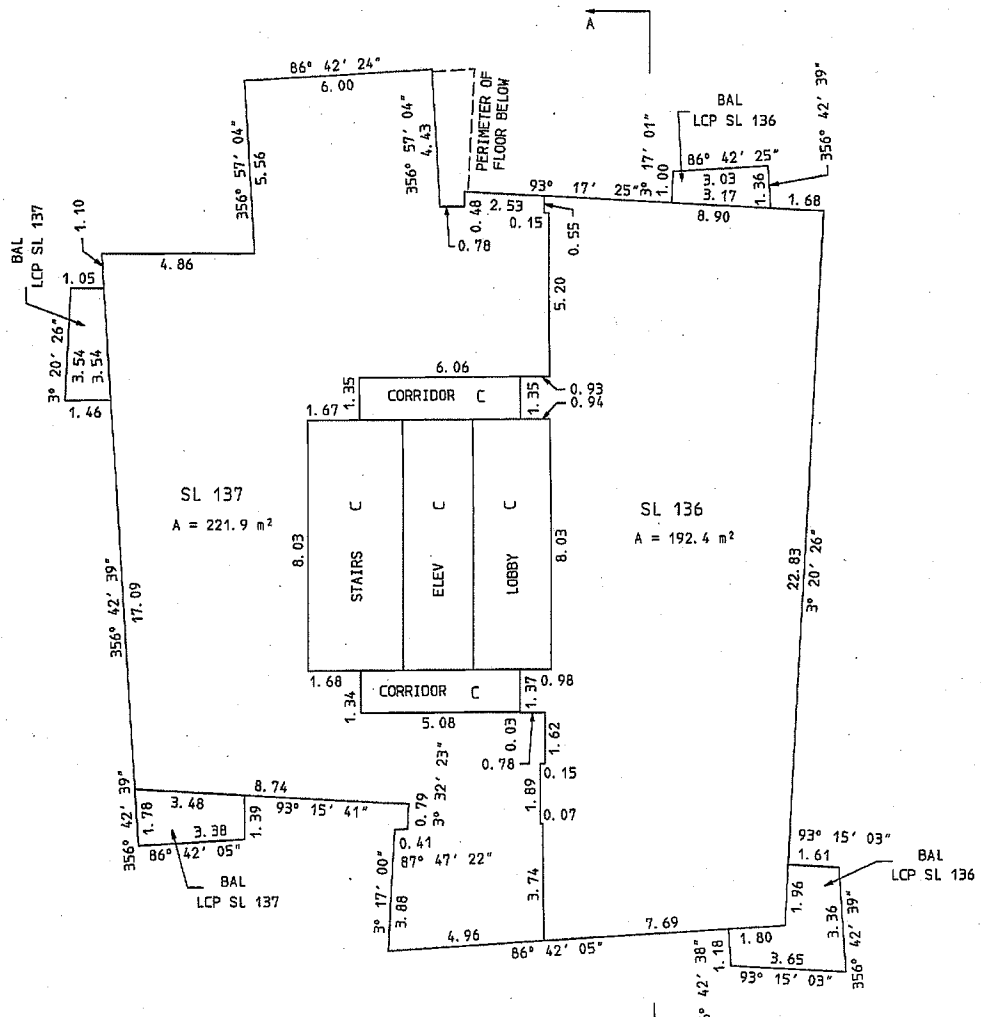
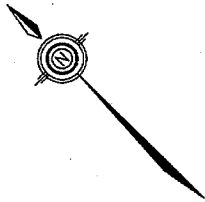
S-10775

TWENTYEIGHTH FLOOR

SCALE : 1 : 150
ALL DISTANCES SHOWN ARE IN METRES



FOR THE PURPOSES OF AREA CALCULATIONS,
WALLS ARE ASSUMED TO BE 0°, 90°, OR AS NOTED

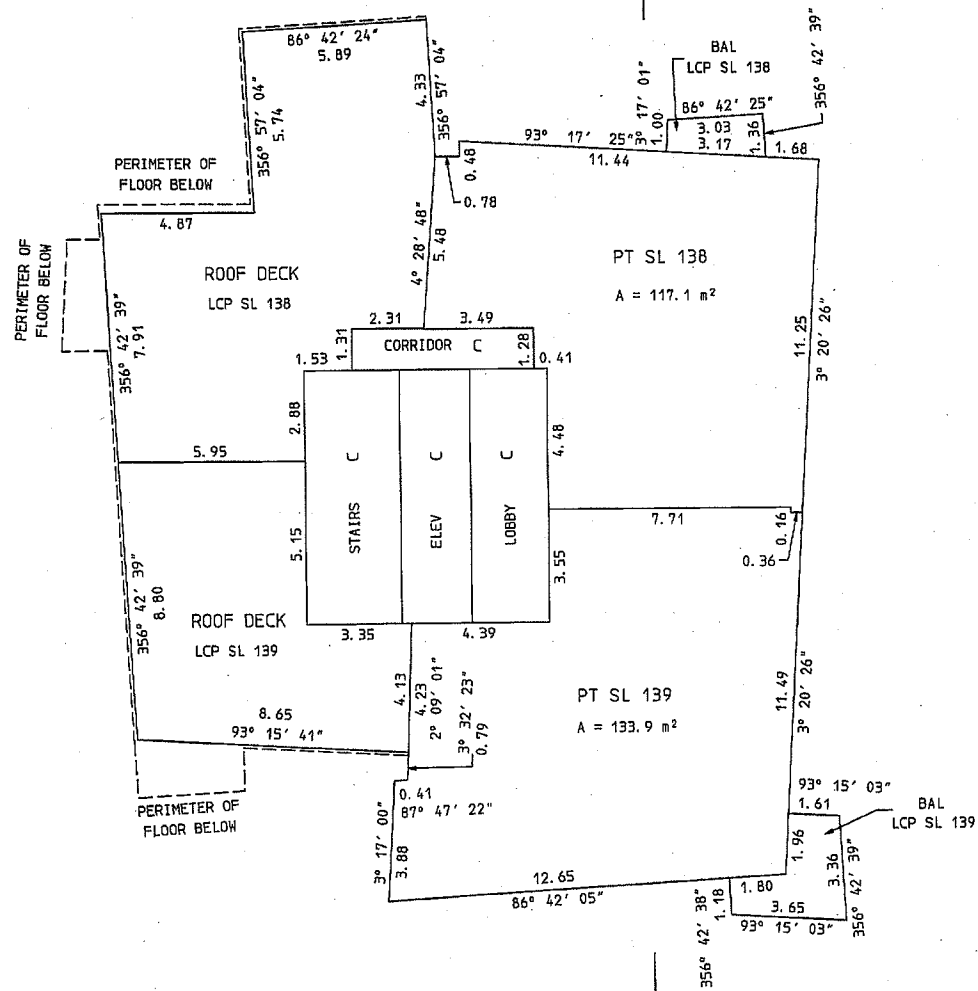
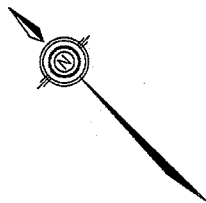


TWENTYNINTH FLOOR

SCALE : 1 : 150
ALL DISTANCES SHOWN ARE IN METRES



FOR THE PURPOSES OF AREA CALCULATIONS,
WALLS ARE ASSUMED TO BE 0°, 90°, OR AS NOTED



TOTAL AREAS
SL 138 208.6 m²
SL 139 258.5 m²

JULY 16th, 2007

V. 2004: 2004-165. S31

S-10775

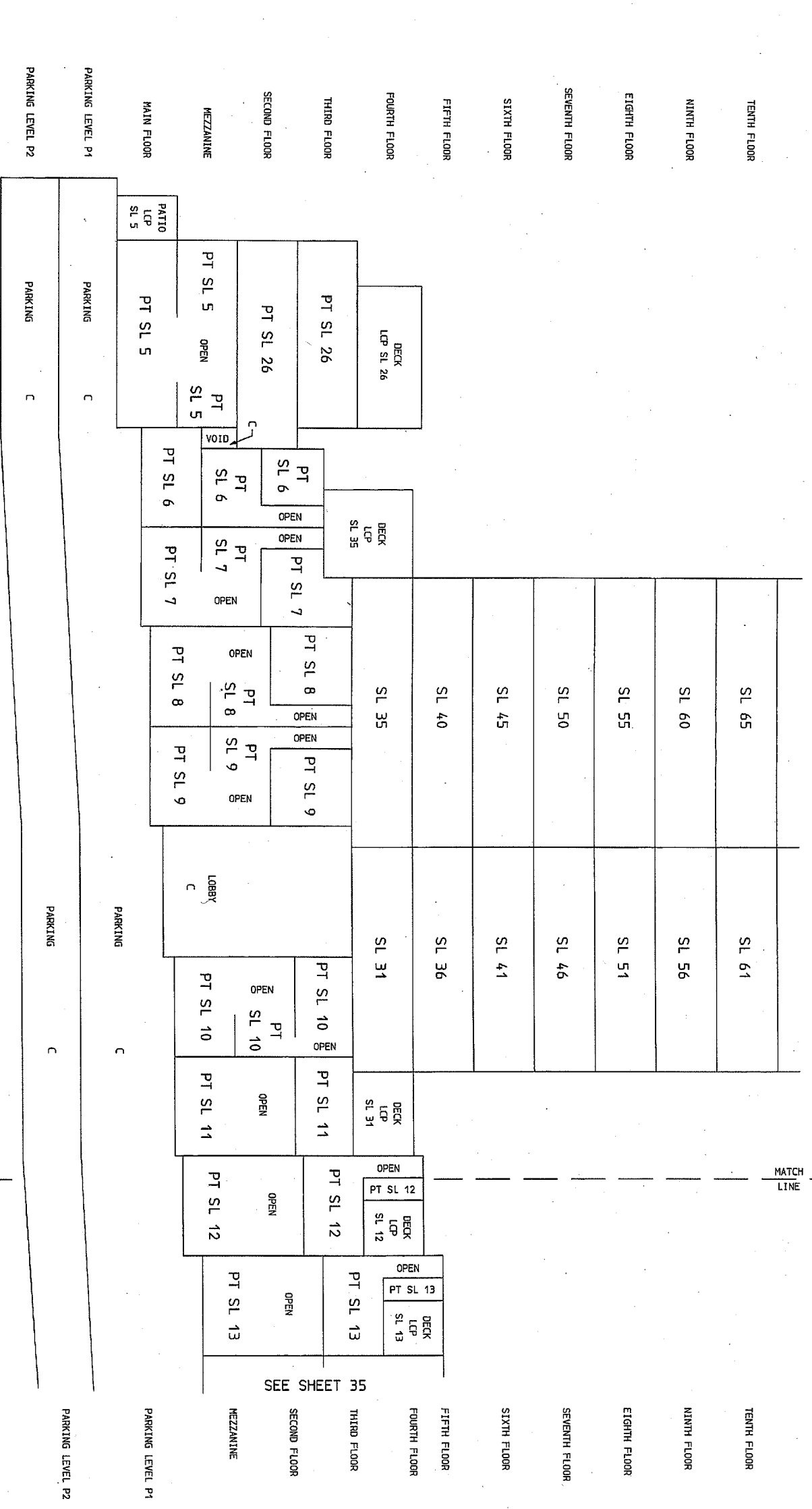
LOWER AND SOUTHERLY PART OF SECTION A - A

SCALE : 1 : 150
ALL DISTANCES SHOWN ARE IN METRES



SEE SHEET 34

SHEET 33 OF 35 SHEETS
STRATA PLAN
BCS 2495



JULY 16th, 2007

V.2004.2004-165.533

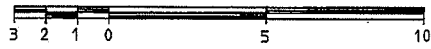
S-10775

UPPER AND SOUTHERLY PART OF SECTION A - A

SHEET 34 OF 35 SHEETS.

STRATA PLAN
BCS 2495

SCALE : 1 : 150
ALL DISTANCES SHOWN ARE IN METRES



THIRTIETH FLOOR	OPEN	PT SL 139	PT SL 138
TWENTYNINTH FLOOR	PT SL 139		PT SL 138
TWENTYEIGHTH FLOOR	SL 136		
TWENTYSEVENTH FLOOR	SL 135		SL 132
TWENTYSIXTH FLOOR	SL 131		SL 128
TWENTYFIFTH FLOOR	SL 127		SL 124
TWENTYFOURTH FLOOR	SL 123		SL 120
TWENTYTHIRD FLOOR	SL 119		SL 116
TWENTYSECOND FLOOR	SL 115		SL 112
TWENTYFIRST FLOOR	SL 111		SL 109
TWENTIETH FLOOR	SL 108		SL 106
NINETEENTH FLOOR	SL 105		SL 103
EIGHTEENTH FLOOR	SL 102	LCP SL'S 91 TO 94	SL 99
SEVENTEENTH FLOOR	SL 98		SL 95
SIXTEENTH FLOOR	SL 94		SL 91
FIFTEENTH FLOOR	SL 90		SL 86
FOURTEENTH FLOOR	SL 85		SL 81
THIRTEENTH FLOOR	SL 80		SL 76
TWELFTH FLOOR	SL 75		SL 71
ELEVENTH FLOOR	SL 70		SL 66
TENTH FLOOR	SL 65		SL 61
	SEE SHEET 33		

MATCH
LINE

MATCH
LINE

V: 2004; 2004-165. 534
S-10775

JULY 16th, 2007

