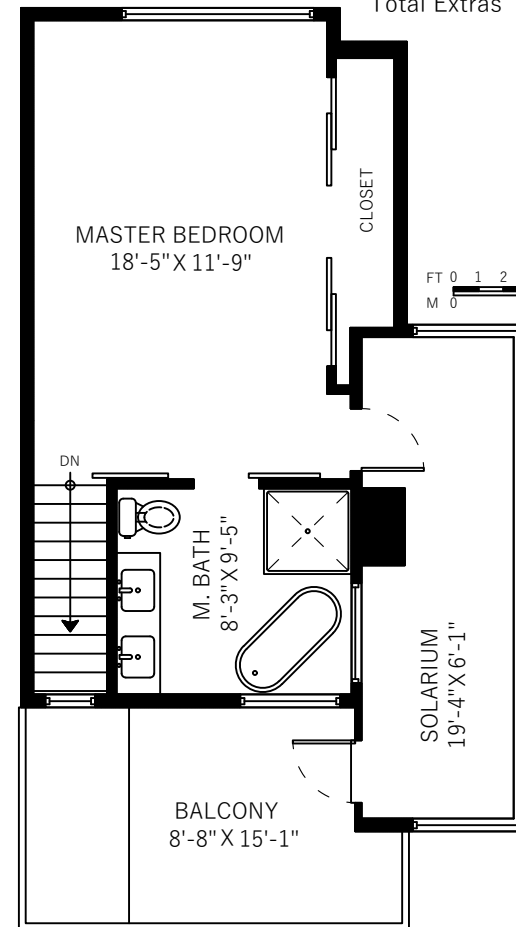
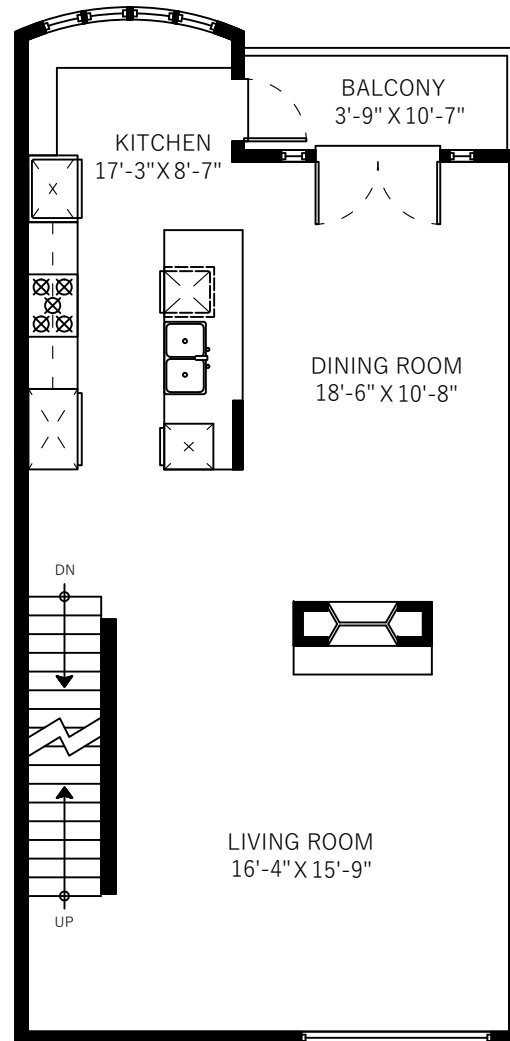
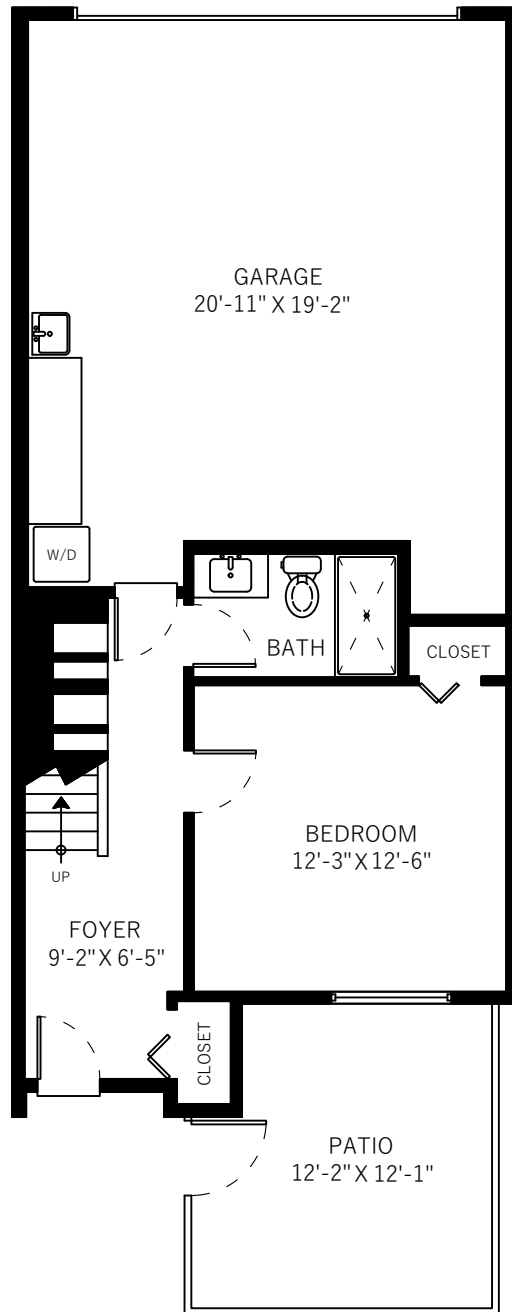


1975 Stephen St Vancouver, BC



Main Floor	777 SQ.FT.
Upper Floor	538 SQ.FT.
Lower Floor	387 SQ.FT.
Total	1702 SQ.FT.

Patio	147 SQ.FT.
Balcony	44 SQ.FT.
Balcony	129 SQ.FT.
Garage	460 SQ.FT.
Total Extras	780 SQ.FT.

