

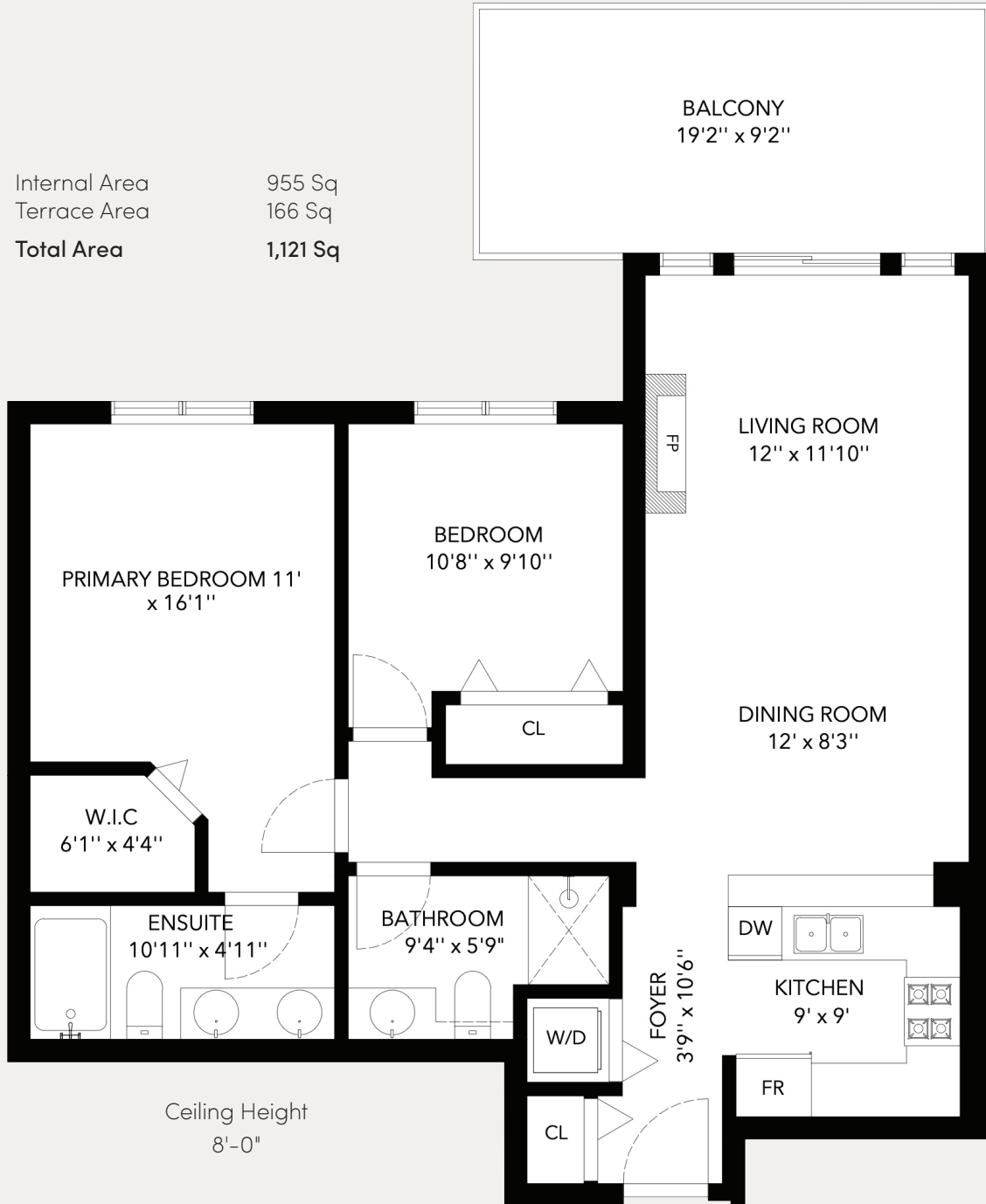


Residence

# 301

9283 GOVERNMENT STREET  
BURNABY NORTH, BURNABY

Internal Area 955 Sq  
Terrace Area 166 Sq  
Total Area 1,121 Sq



WEST HAVEN  
GROUP



The floor plan and measurements are approximate, typically withing +/- 2%. These are intended strictly for marketing purposes. Buyers to verify if deemed important and to refer to the strata plan.