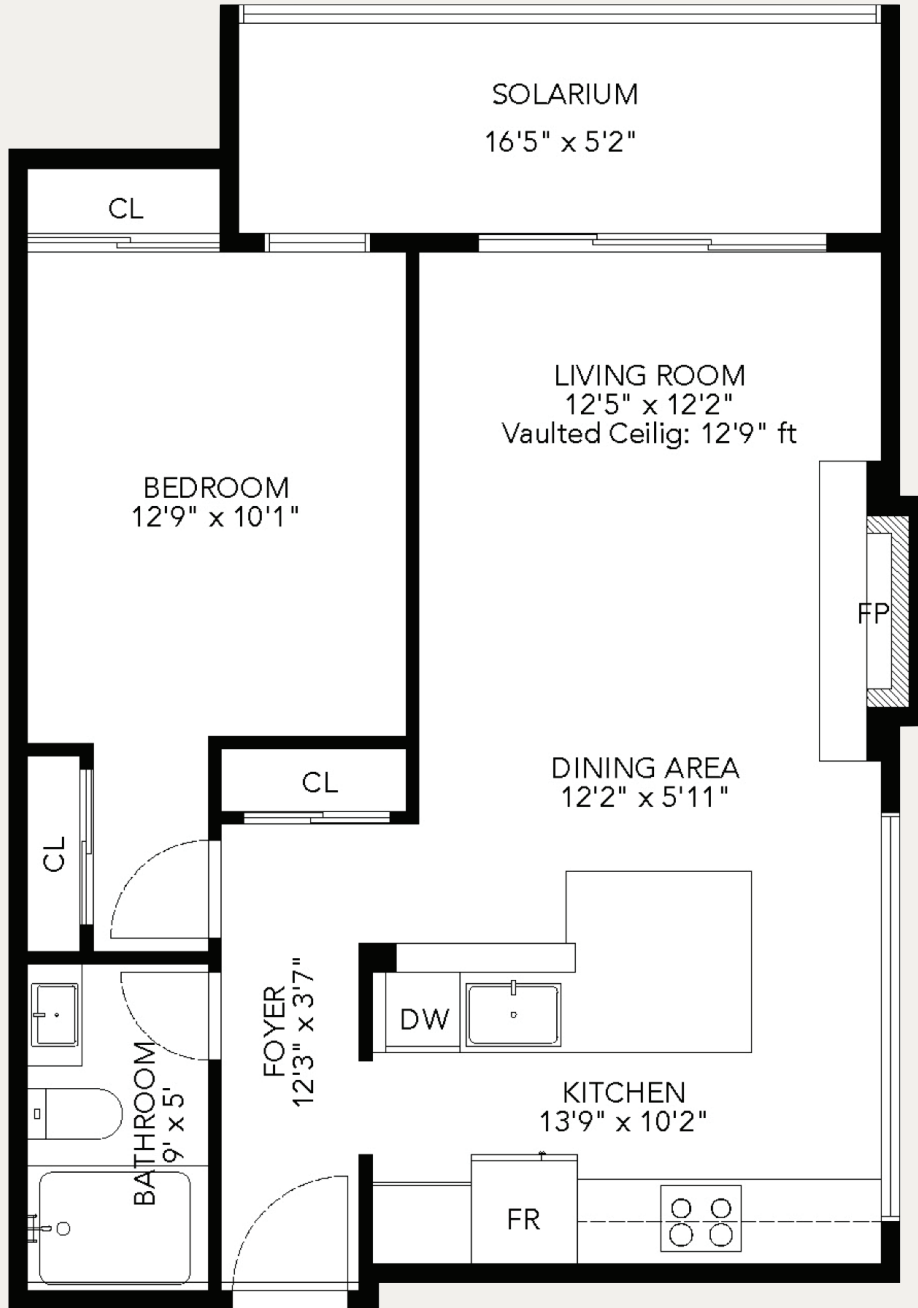


Residence

308

1855 NELSON STREET
WEST END, VANCOUVER

Interior Area 767 Sq
Total Area 767 Sq



Ceiling Height
8'-0"



WEST HAVEN
GROUP



The floor plan and measurements are approximate, typically withing +/- 2%. These are intended strictly for marketing purposes. Buyers to verify if deemed important and to refer to the strata plan.