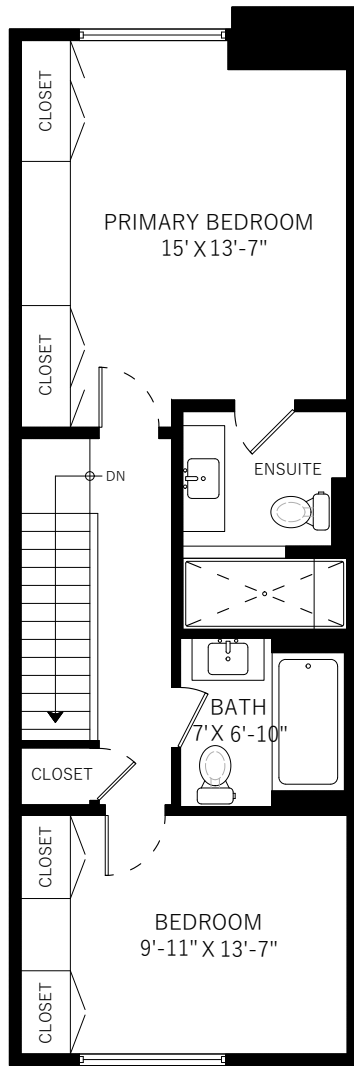
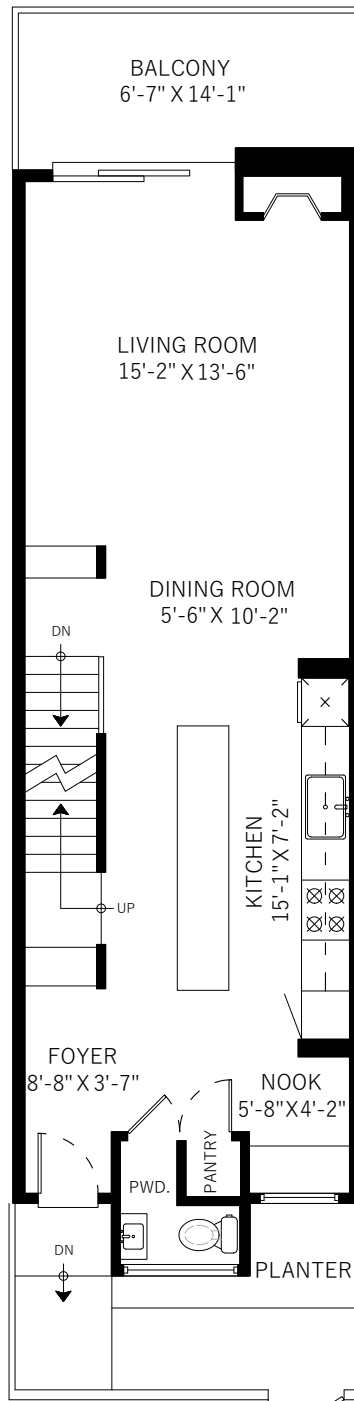


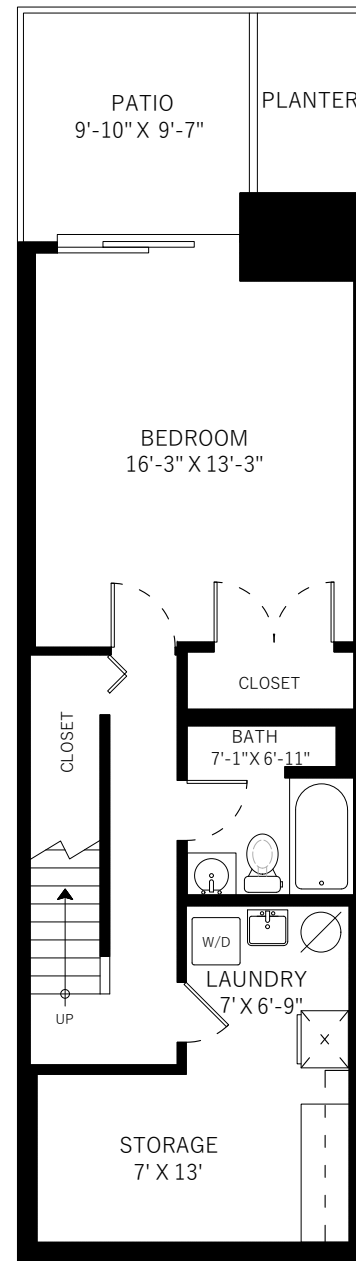
3905 Parkway Drive Vancouver, BC



Upper Floor: 629 Sq.Ft.
Ceiling Height: 8'



Main Floor: 643 Sq.Ft.
Ceiling Height: 8'



Lower Floor: 618 Sq.Ft.
Ceiling Height: 8'

Main Floor	643 SQ.FT.
Upper Floor	629 SQ.FT.
Lower Floor	618 SQ.FT.
Total	1890 SQ.FT.

Patio	133 SQ.FT.
Balcony	94 SQ.FT.
Carport	183 SQ.FT.
Total Extras	410 SQ.FT.

