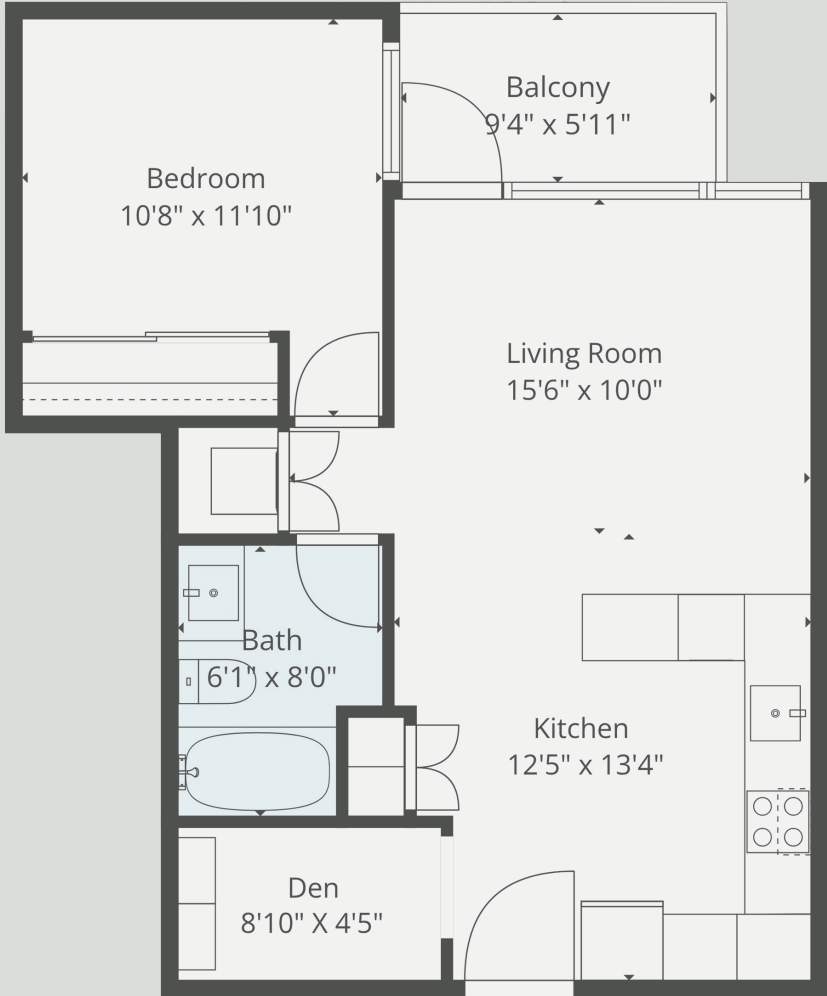


401 - 1808 W 1ST AVENUE
KITSILANO // VANCOUVER



Ceiling Height
8'-9"

Interior Area	605 Sq
Balcony Area	55 Sq
Total Living Area	660 Sq

Floor plan and measurements are approximate, typically within +/- 2% and are intended for marketing purposes only. Buyers to verify if deemed important and to refer to the strata plan.

