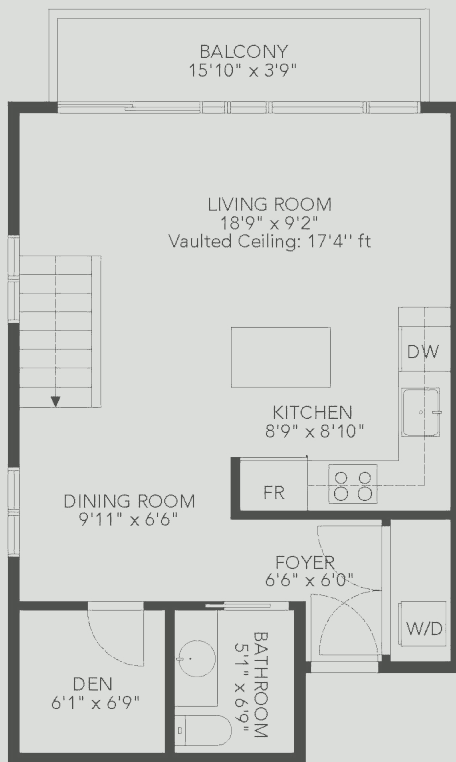


Main Floor Area 562 Sq
 Upper Floor Area 241 Sq
 Total Area 803 Sq
 Terrace Area 54 Sq



Ceiling Height
8'-5" to 17'-4"



Ceiling Height
7'-2" to 8'-0"



The floor plan and measurements are approximate, typically withing +/- 2%. These are intended strictly for marketing purposes. Buyers to verify if deemed important and to refer to the strata plan.

