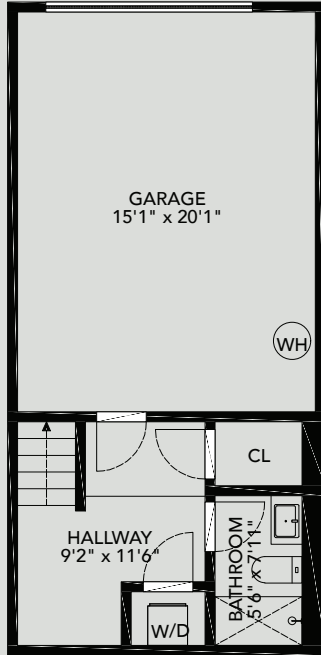
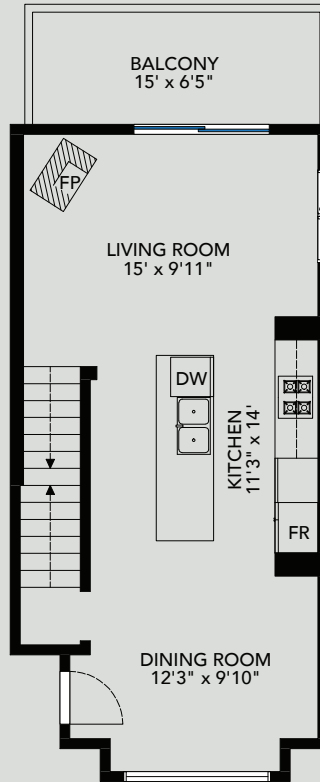


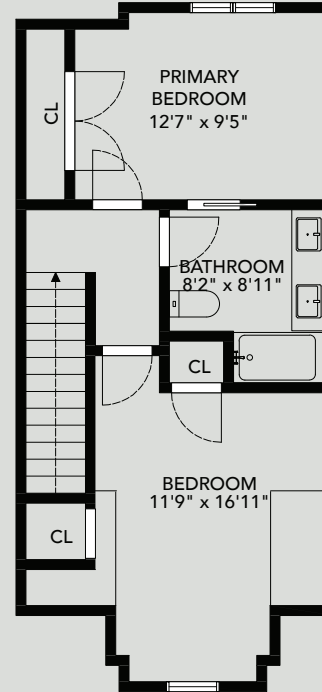
Main Floor Area	561 Sq
Upper Floor Area	488 Sq
Lower Floor Area	224 Sq
Total Area	1,273 Sq
Terrace Area	78 Sq
Garage Area	292 Sq
Total Other Area	370 Sq



Ceiling Height
8'-5"



Ceiling Height
8'-3"



Ceiling Height
8'-0"



The floor plan and measurements are approximate, typically within +/- 2%. These are intended strictly for marketing purposes. Buyers to verify if deemed important and to refer to the strata plan.