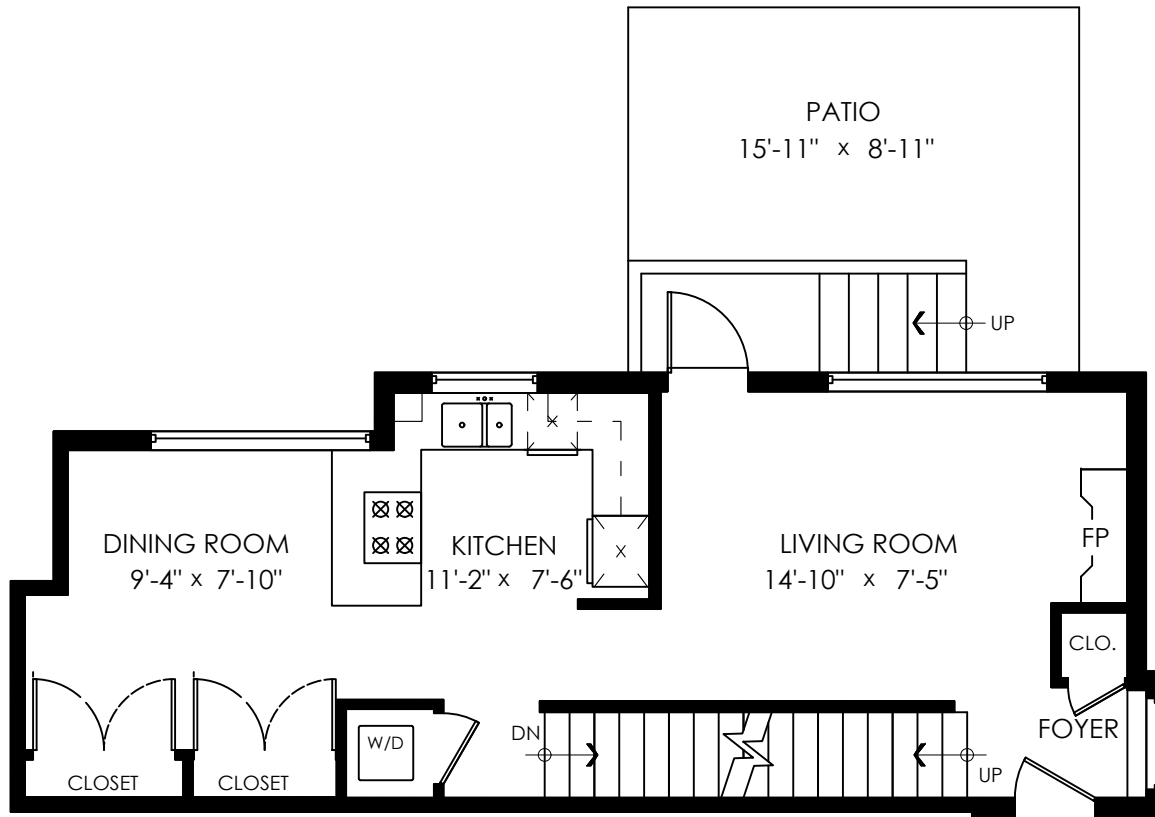


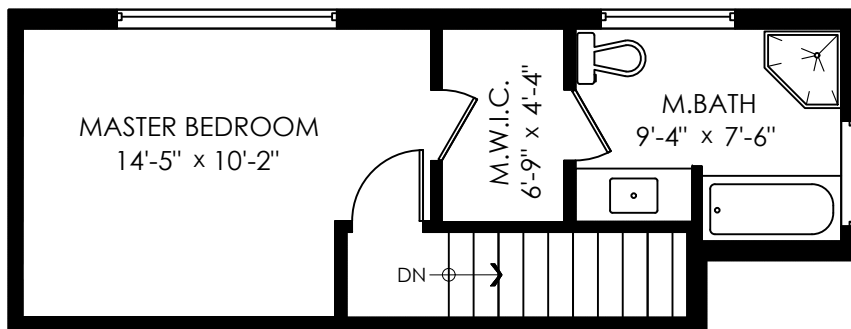
2518 W 8 Ave. Vancouver, BC

Main Floor	588 SQ.FT.
Upper Floor	326 SQ.FT.
Lower Floor	345 SQ.FT.
Total	1259 SQ.FT.

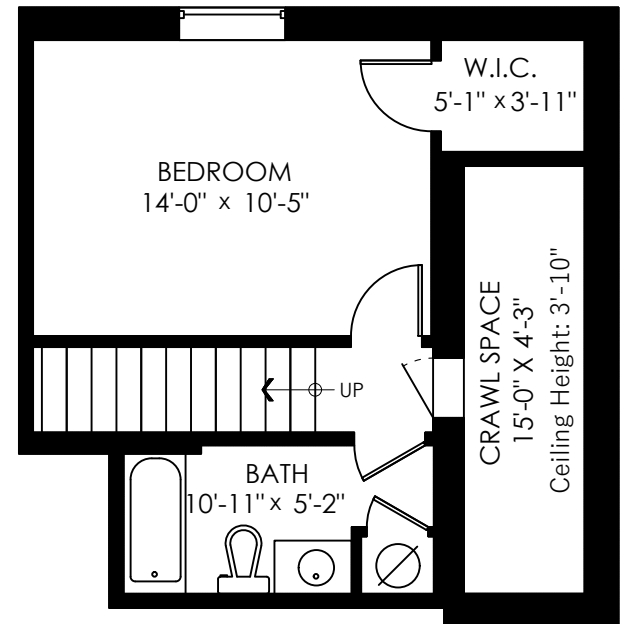
Patio	157 SQ.FT.
Crawl Space	88 SQ.FT.
Total Extras	245 SQ.FT.



Main Floor: 588 Sq.Ft.
Ceiling Height: 9'-4"



Upper Floor: 326 Sq.Ft.
Ceiling Height: 8'-7"



Lower Floor: 345 Sq.Ft.
Ceiling Height: 7'-11"

