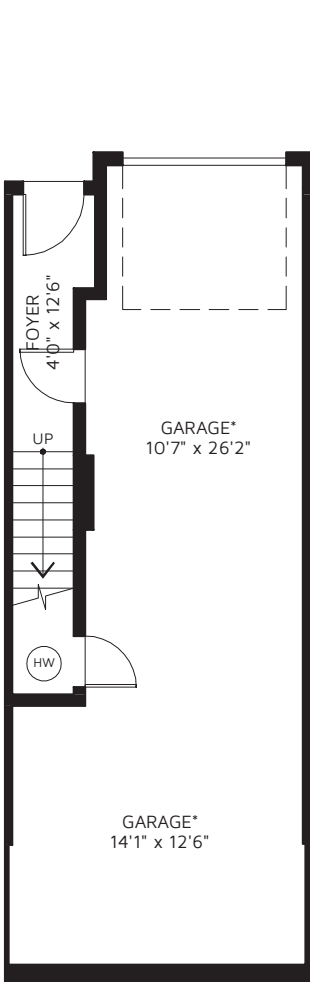




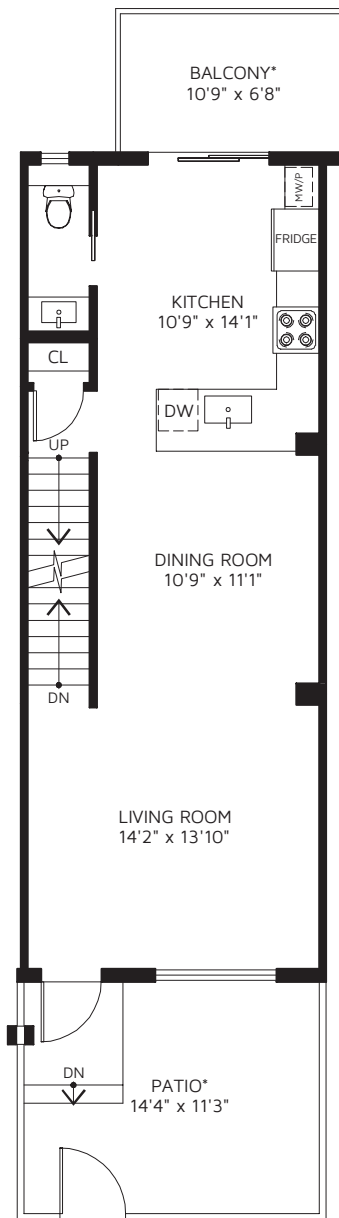
WEST HAVEN
GROUP

606 - 3021 ST GEORGE ST
PORT MOODY, BC

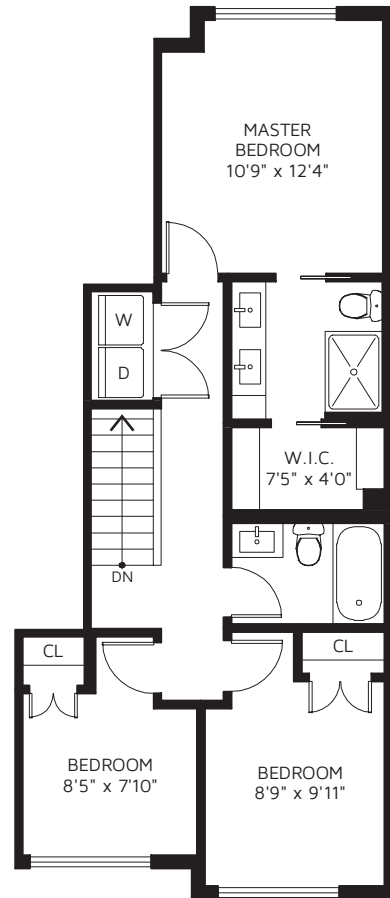
Upper Floor	626 SQ FT
Main Floor	596 SQ FT
Basement	104 SQ FT
TOTAL	1,326 SQ FT



BASEMENT



MAIN FLOOR



UPPER FLOOR

Balcony	78 SQ FT
Patio	170 SQ FT
Garage	493 SQ FT