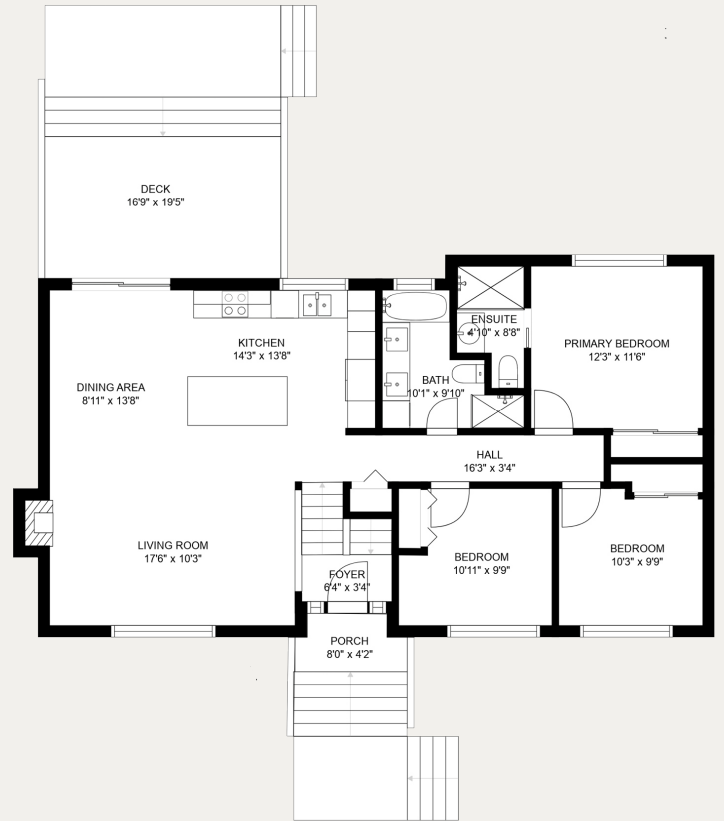
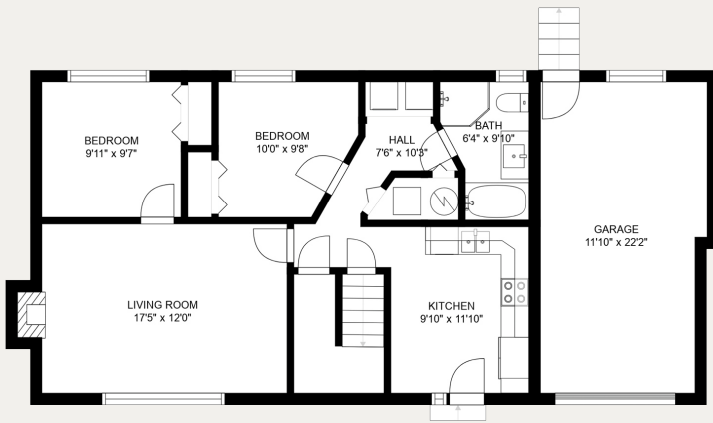


# 3363

3363 VIEWMOUNT PLACE, PORT MOODY-  
PORT MOODY CENTRE



Main Floor Area 1,247 Sq  
Lower Floor Area 861 Sq  
**Total Area 2,108 Sq**

Garage 293 Sq  
Deck 327 Sq

Ceiling Height  
8'-0"



**WEST HAVEN**  
GROUP



OAKWYN REALTY DOWNTOWN LTD.